

Additional core acceptance criteria

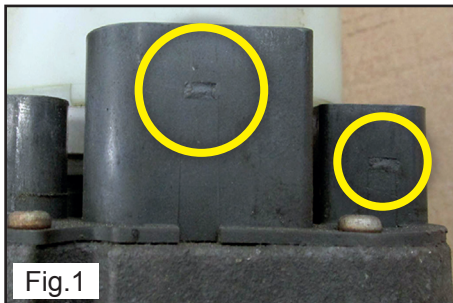
In order to ease the return procedure for the workshops, TRW decided to expand the core return acceptance criteria for the following electrical steering pumps:

JER104, JER105, JER106, JER110, JER111, JER112, JER113, JER114, JER115, JER117, JER118, JER134, JER155, JER156, JER157, JER158, JER161, JER162, JER165, JER166, JER171 and JER174

From now on, the following slight damages are accepted:

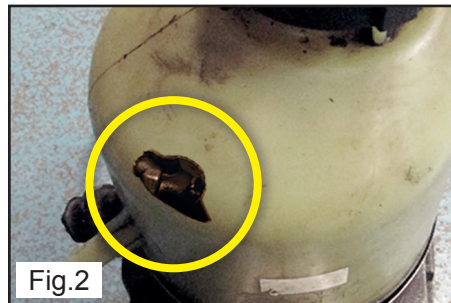
Missing beaks (Fig.1)

No further damages on connector!



Damaged tank (Fig.2)

No damages on inner parts!



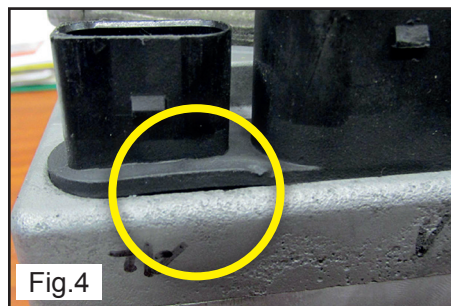
Slightly damaged lower housing (Fig.3)

No cracks!



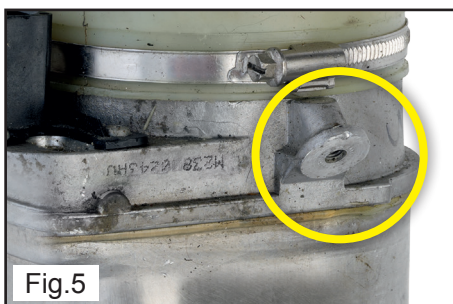
Slightly, thermal damaged connector (Fig.4)

No further damages on connector!



Lost rubber-metal fitting (Fig.5)

No damages on thread or housing !



Complete core return criteria - described in the TRW Service Information XZS116D - needs to be precisely observed!

