

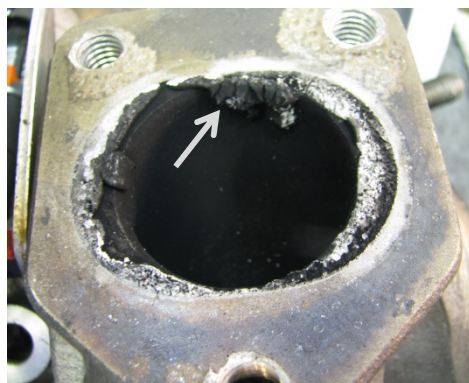
**Whistling Noises on Turbocharger****Please note:**

Whistling noises usually develop between the flat surface of the manifold and the turbine inlet. The reason is mostly a distorted flat surface on the manifold outlet. Please check the condition of this flat surface before installing the new turbocharger. If the sealing surface is distorted or if the drilled holes are deformed into a hollow shape, the exhaust manifold has to be adapted or replaced. The parallelism of the surfaces should be +/-0,05mm.

The original manufacturers install this turbocharger without an additional gasket. Therefore, the gaskets available in the aftermarket are not compliant with the OE installation instructions. This is the reason why we do not include this gasket in our mounting kit.

**Please note:**

Do not use any kind of sealant. Excess sealant may loosen after hardening and will be transported through the exhaust stream. The parts of this sealant will act as foreign body on the VTG and the gas inlet edges of the turbine wheel.

**Information:**

An increased exhaust gas back pressure prevents very small crevices to be leaktight, due to soot building up.

We recommend checking the exhaust gas back pressure, also to prevent any damages to the turbocharger and its surroundings.

You can obtain our measuring tool through your local dealer – our partnumber: **MESS01**.

**Vehicle manufacturer:** VW, AUDI, SEAT, SKODA

**Vehicle:** Golf III, Golf IV, Passat, Vento, A4, A6, Ibiza II, Toledo I, Cordoba, Superb

**Engine Code:** AHH, AFN, AVG, ATJ, AJM, AVB, BKE, BRB, BPZ, BSV

**Validity:**

This service information is valid for the exchange of the turbocharger with **BTS reference:** T911026, T911194, T916184 (mounting kit T931005ABS fits these turbochargers)

**BTS Service Set reference:** T981036, T981038, T981077, T981085, T981103, T981360, (T931005ABS is already included)

**Please note:**

**OE-references are only for means of comparison.**

**The content of this Service Information is non-binding and is only for informational purposes.**

**The manufacturer specifications have to be adhered to.**