



## INA Service Info



# Water pump for VAG diesel engines

## Installation instructions

Manufacturer: Audi, Seat, Škoda, VW

### Models:

**Audi:** A1 (8X), A3 (8V), A4 (8K, 8W), A5 (8T), A6 (4G)  
**Seat:** Leon (5F), Alhambra (710), Ateca (KH7)  
**Škoda:** Octavia (5E), Superb (3V5), Kodiaq (NS7)  
**VW:** Arteon (3H7), Beetle (5C), Caddy (SAA), Golf VI (1K) & VII (AU), Multivan/Transporter (T6), Passat (3G), Polo (AW)

**Engines:** 1,6 and 2,0 TDI/EA 288

**Part number:** 538 0983 10

See parts catalogue for current application details

For the water pumps of the above engines, the volumetric flow is achieved via a switchable impeller aperture. The water pump is actuated by means of internally generated hydraulic pressure controlled by an electromagnetic valve mounted in the housing. Schaeffler Aftermarket offers these OE-compliant water pumps for the 1.6 and 2.0 TDI engines found in the EA 288 series under item number 538 0983 10.

Conventional water pumps (without aperture and control system) are also in use for these engines. These versions are not as suitable because they do not correspond to the original equipment and have a negative effect on exhaust emissions.

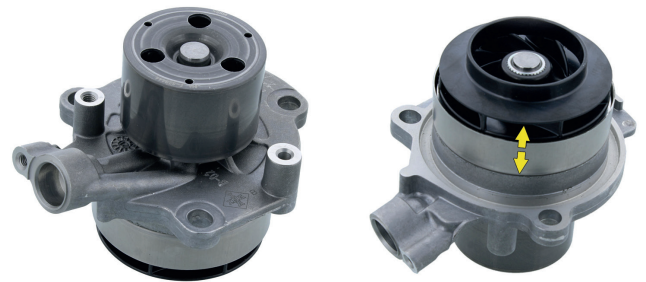


Image 1: Water pump 538 0983 10 with switchable impeller aperture

When replacing the water pump, the following points should be taken into consideration:

- The water pump drive must not be moved against the operating direction, otherwise the internal hydraulic pump will be damaged
- New water pumps are delivered without an electromagnetic valve as replacement is not required during repair. The valve must be removed from the original water pump, and reused by installing new seals supplied with the new pump.
- After the water pump is replaced, the cooling system must be filled using a vacuum device according to the vehicle manufacturer's instructions and bled with a suitable diagnostic tool. Failure to do so may destroy the water pump and cause the engine to overheat. Do not start the engine without coolant, as this will damage the water pump.

Please observe the vehicle manufacturer specifications!

**You want more? We can help!**

Phone: +44 (0) 1432 264 264

Fax: +44 (0) 1432 375 760

aftermarket.uk@schaeffler.com

www.repxpert.co.uk

SCHAEFFLER  
**REPXP**ERT