



SHAFTEC®

PR633 - PR635 - PR1138

Technical Information

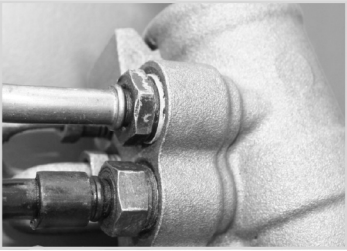


Figure 1

Care is needed when connecting the pressure feed and return pipes (figure 1). It is important not to over tighten the fitting as this will strip the thread. Please be aware that, even after the fitting is fully secured, the pipes can still be moved.



Figure 2

A nylon washer is fitted to the thread of the fitting (figure 2). We recommend that this is replaced with a new washer each time the fitting is removed. The washer makes a fluid seal on the thread of the fitting. If it is damaged it is likely that the fitting will leak.

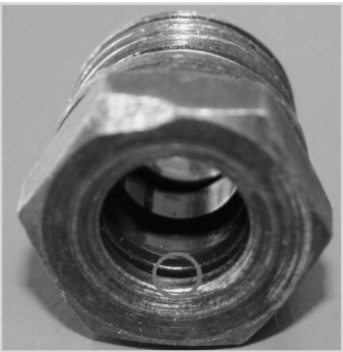


Figure 3

The fitting also has an internal O ring (figure 3). It is important that this is checked following installation to ensure it is not damaged. If the fitting is leaking, it will need to be replaced or a new pipe assembly fitted.

Damage to the pressure port thread caused by over tightening will invalidate the warranty.