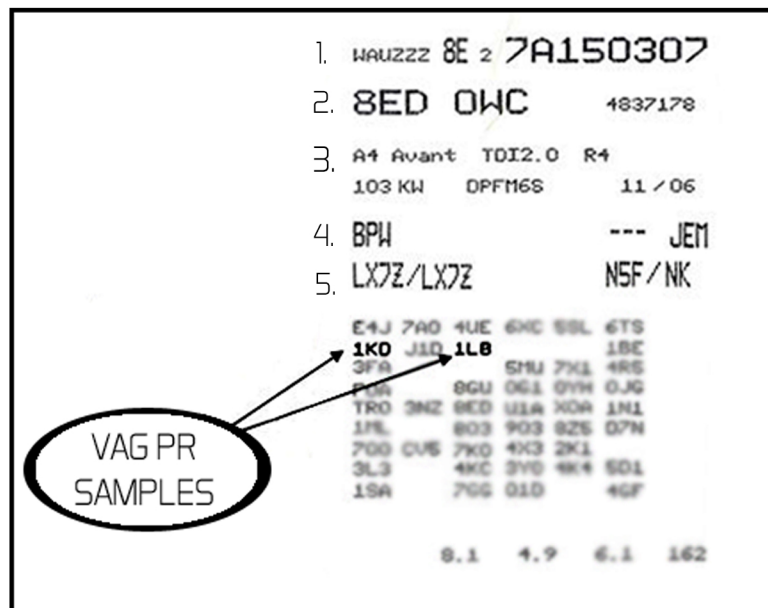


## VAG PR CODES

PR codes are on every make of car from VAG (Volkswagen Audi Group) since 1999. Vehicles that are affected are: VW, Audi, Seat and Skoda.

The PR code is a 3 character code that describes the various options installed in the car. The PR code can be found on a sticker which is usually on the first page of the car's warranty booklet. There should also be one in the spare tyre area of the car. This sticker contains virtually all the technical data about your car, including engine type, gearbox type, factory fitted options, brake specification and lots more.

1. The top line is the full chassis number of the car.
2. This is the model code, this depicts what type of car it is, and is very useful when trying to identify the correct part.
3. This is a description of the car.
4. This line is the engine and transmission code.
5. This is the exterior paint code, followed by the interior trim code.



Here at Bettapart we hold all of the PR codes on our database to make identification of parts simple and straight forward, so when making an enquiry please advise us of the PR code of the vehicle so we can locate the correct part, hassle free to save you time! The PR codes are also available on our webshop.

The screenshot shows the website's search interface. At the top, there are navigation tabs: Home, Air Springs, Steering & Suspension, Shock Absorbers, CV Brakes, LCV Brakes, and Car Brakes. A search bar is present with a "Search" button. Below the search bar, there is a section for "Search by Part / Cross Reference" with a "Compare Up To 4 Parts Numbers" button. The search results show a vehicle: AUDI A2 8Z0 1.4 1.4 75PS Hatchback 1390cc AUA;BBY 02/2000 - 08/2005. Under the heading "Brakes (4)", there are two rows of results for the front axle:

Front Axle				
for PR number: T1Q;T0U;T94;T60	Brake Pad Set		JCP1635	<input type="checkbox"/>
for PR number: T1Q;T0U;T94;T60	Brake Disc	V, 256mm	VAG119	<input type="checkbox"/>

Below this, there is a section for the rear axle with a "Brake" entry.