



febi 175368

To fit:

Toyota Land Cruiser (URJ20*),
 Sequoia (UPK60, USK6*),
 Tundra (UPK5*, USK5*),
 Lexus LX460, LX570 (URJ2)

Engine: 1UR-FE, 3UR-FBE, 3UR-FE



EN

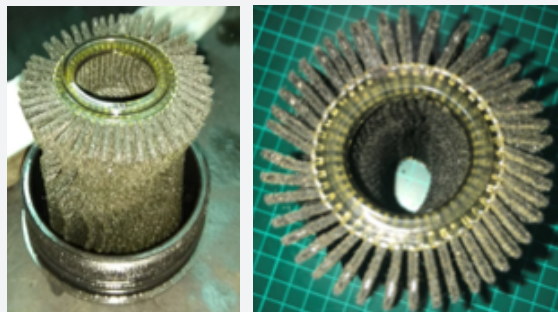
Oil Filter Housing Cap

Problem

The low oil pressure lamp is illuminated and the vehicle loses power, as well as becoming noisier in operation.

Cause

It is possible for the central perforated support tube to become detached from the cap when removing the old oil filter. If this goes unnoticed it will result in the oil filter collapsing inwardly - reducing the oil flow to the engine and potentially causing catastrophic engine damage.

**Solution**

Before fitting a new oil filter element, check to make sure that the perforated support tube is securely attached to the oil filter housing cap. If it is missing or loose, replace the cap. Remember to lubricate the O-ring seal with clean engine oil before fitment and tighten the cap to 25Nm.

For more technical information please visit: partsfinder.bilsteingroup.com