

MOUNTING INSTRUCTIONS



SAS-10015

Front Left Air Suspension

**GENERAL WARNINGS:**

CAUTION: Damage to the vehicle and air suspension system can be incurred if work is carried out in a manner other than specified in the instructions or in a different sequence.

The air suspension system under pressure(max 10 bar, or 150lbf/in; before Disassembly, confirm that the pressure has been released and disconnect the power supply of the air suspension system.

Do not let dust or grease enter the system.

Always wear standard hand, ear and eye protection device when servicing the air suspension system.

Do not store struts below 5°F (-15°C) or above 122°F (50°C)

Avoid damages to air lines and wires

Must be disassembled and installed by a fully qualified professional at a specialist garage

Use car manufacturer's diagnostic software

Use car manufacturer's documentation for correct tightening torques

To avoid the possibility of short circuits while working with electric components consult your owner's manual on how to disconnect your battery.

For the correct Jack fulcrum and other maintenance, safety and maintenance instructions of the vehicle, please refer to your user manual, service manual, or consult your car dealer. In any case, do not work under the vehicle without sufficient support, because it may cause serious casualties.

Disassembly of the Air Pipe

Remove the original air line before inserting it into the new air pipe connector.



1、 original joint



2、 Slide the threaded part along the pipe path

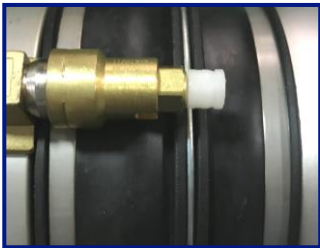


3、 Remove the collet

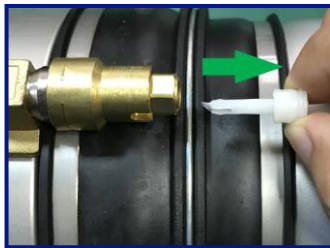


4. Remove the threaded part, disassembly is complete

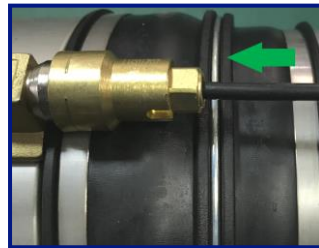
Installation of Air Pipe



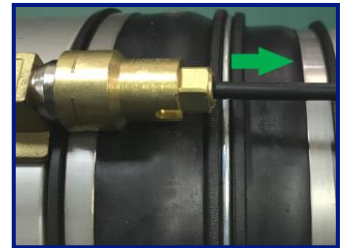
1.New Sample of shipping pins



2.Remove and dispose and press until it is felt to engage



3.Insert the air line into the connector line, pull the air



4.After entering the air line outward to lock and ensure secure



Attention: Scratches or cuts in the air line may cause leakage.

Before inserting, please check the air line and replace it if it is damaged

Disassembly the Front Air Suspension

The ignition must remain off during work on the air suspension module.

1. Adjust the steering wheel to face the front.
2. Turn on the lifting mode, turn off ignition switch; Lift the vehicle and remove the tire.
3. Remove the sealing strip(Figure 1) and the plastic plate(Figure 2) in the engine compartment; remove the 3 top bolt sealing covers Figure (3).



Figure 1



Figure 2

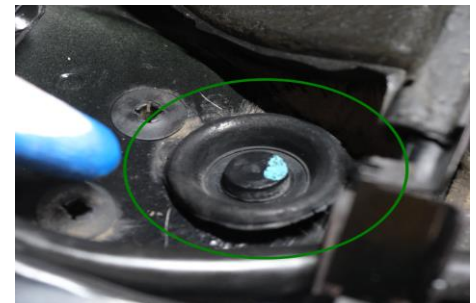


Figure 3

4. Remove 3 top mounting bolts.(Figure 4, Figure 5, Figure 6)



Figure 4



Figure 5



Figure 6

5. Remove the air pipe nut(Figure 7); pull out the wire plug of shock absorber(Figure 8)

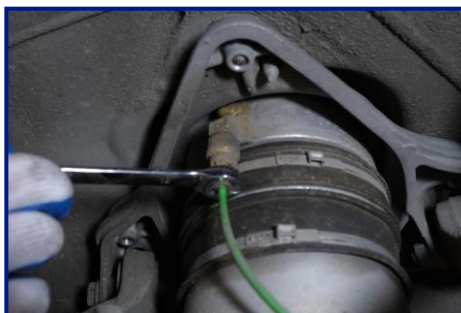


Figure 7



Figure 8

6. Loosen the clamping nut bolts(Figure 9), and remove the upper control arm ball joint(Figure 10).



Figure 9

Figure 10

7. Remove the bottom mounting nut and bolt(Figure 11); remove the air suspension(Figure 12).



Figure 11



Figure 12

8. Remove the 4 mounting nuts(Figure 13); remove the top mounting assembly(Figure 14); disassembly is complete.



Figure 13

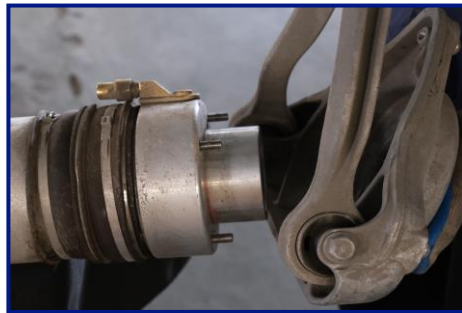


Figure 14

Installation of Front Air Suspension



Tighten all bolts and nuts according to the manufacturer's specifications during installation.

Installation steps:

1. Install the top mounting module and tighten the 4 mounting nuts(Figure 15); put the air suspension back on the car(Figure 16).



Figure 15



Figure 16

2. Tighten the 3 top nuts (Figure 17, Figure 18, Figure 19).



Figure 17



Figure 18



Figure 19

3. Tighten the bottom mounting bolt and nut (Figure 20); install upper control arm balls and install the bolts (Figure 21), lock the nuts (Figure 22)



Figure 20

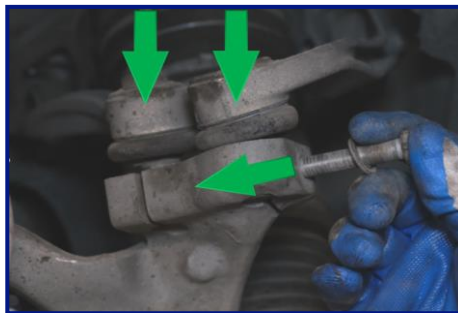


Figure 21



Figure 22

4. Install the air nut(Figure 23); Install the wire plug(Figure 24); install the tire(Figure 25).

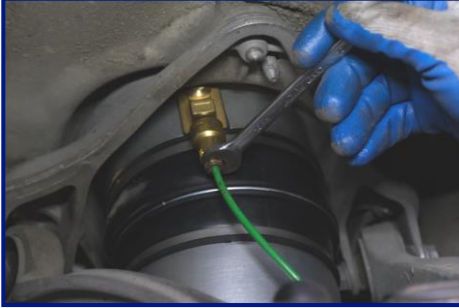


Figure 23



Figure 24



Figure 25

5. Lower the vehicle to standard height, start the engine, wait for 2 minutes, turn off the lift mode, slowly lower the vehicle until the body can be raised automatically, and check whether the air suspension is leaking(Figure 26); install 3 top bolt seal covers(Figure 27).



Figure 26

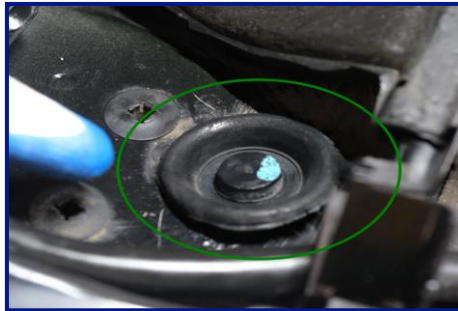


Figure 27

6. Install the plastic plate(Figure 28) and the sealing trip(Figure 29) in the engine compartment; close the hood; calibrate vehicle with special diagnostic equipment; installation is complete.



Figure 28



Figure 29



Attention : do not lower the car from the lift when there is no pressure on the air suspension / air suspension module.