



SAS-10041

Rear Right Air Strut

**GENERAL WARNINGS:**

CAUTION: Damage to the vehicle and air suspension system can be incurred if work is carried out in a manner other than specified in the instructions or in a different sequence.

The air suspension system under pressure(max 10 bar, or 150lbf/in; before Disassembly, confirm that the pressure has been released and disconnect the power supply of the air suspension system.

Do not let dust or grease enter the system.

Always wear standard hand, ear and eye protection device when servicing the air suspension system.

Do not store struts below 5°F (-15°C) or above 122°F (50°C)

Avoid damages to air lines and wires

Must be disassembled and installed by a fully qualified professional at a specialist garage

Use car manufacturer's diagnostic software

Use car manufacturer's documentation for correct tightening torques

To avoid the possibility of short circuits while working with electric components consult your owner's manual on how to disconnect your battery.

For the correct Jack fulcrum and other maintenance, safety and maintenance instructions of the vehicle, please refer to your user manual, service manual, or consult your car dealer. In any case, do not work under the vehicle without sufficient support, because it may cause serious casualties.

Disassembly the Rear Air Strut:

The ignition must remain off during operation of the pneumatic spring module.

1. Adjust the steering wheel to face the front.
2. Open the hood, then raise the vehicle and remove the corresponding tires with the special sockets. (Figure 1,2,3)



Figure 1



Figure 2



Figure 3

3. Remove the air strut solenoid valve plug and air line inlet line. (Figure 4,5,6)



Figure 4

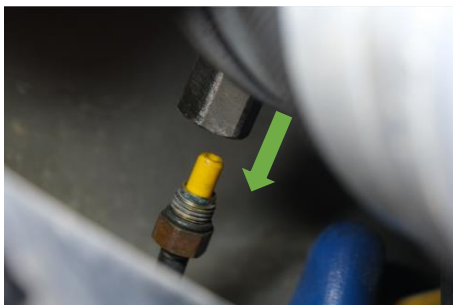


Figure 5

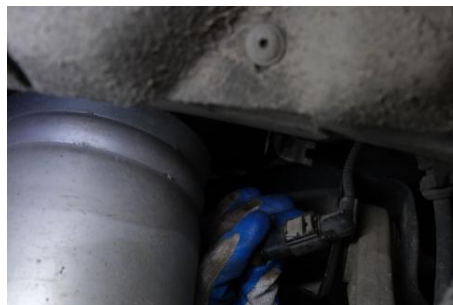


Figure 6

4. Remove the air strut lower retaining bolt nuts. (Figure 7, 8)



Figure 7



Figure 8

5. Open the trunk and remove the luggage compartment interior trim panel. (Figure 9,10,11)



Figure 9



Figure 10



Figure 11

6. Remove the four fixing bolts at the top of the air strut. (Figure 12)
7. Remove the air suspension strut. (Figure 13)

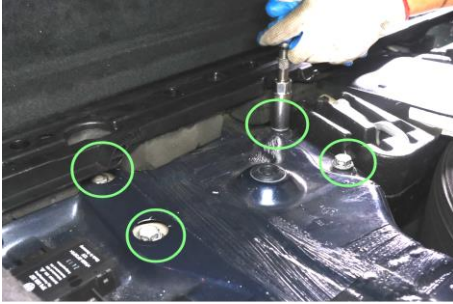


Figure 12



Figure 13

8. Compare the old and new air suspension struts for consistency. (Figure 14)
9. Remove the wire bracket from the old air strut. (Figure 15)



Figure 14



Figure 15

Disassembly is completed.

Installation of Rear Air Strut :

Tighten all bolts and nuts according to the manufacturer's specifications during installation.

Installation steps:

1. Install the wire bracket back into the new air strut. (Figure 1)
2. Install the new air strut into the vehicle. (Figure 2)



Figure 1



Figure 2

3. Tighten the four bolts at the top of the air strut. (Torque to manufacturer's specifications) (Figure 3)

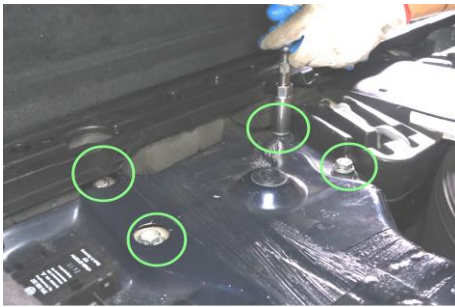


Figure 3

4. Install the air strut lower retaining bolt and tighten the retaining nut (torque according to manufacturer's specifications) (Figures 4, 5)



Figure 4



Figure 5

5. Install the air strut solenoid plug. (Figure 6)
6. Install the brass nut back on the air intake tube. (Figure 7)

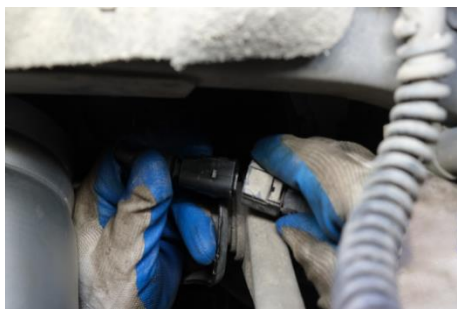


Figure 6



Figure 7

7. Put back all the interior panels of the luggage compartment. (Figure 8, 9)



Figure 8



Figure 9

8. Install car tires. (Figure 10)
9. Lower the vehicle to the standard height, start the engine air supply and connect the special diagnostic equipment to calibrate the vehicle.



Figure 10

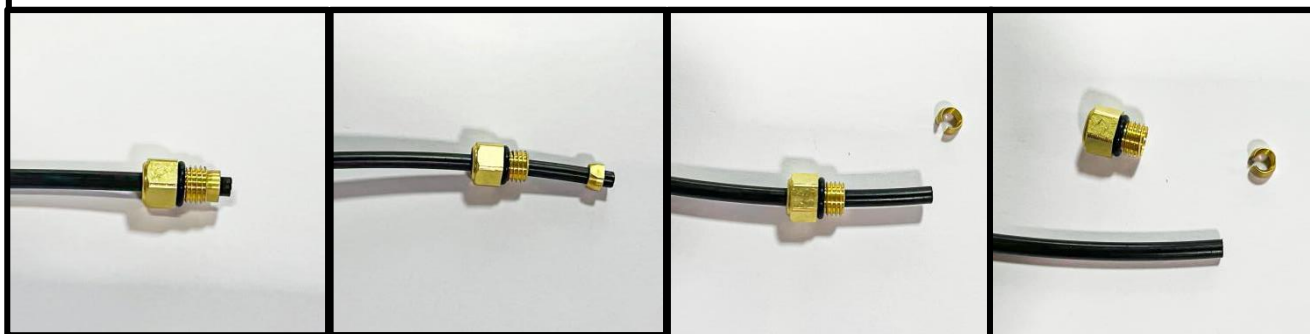
10. Installation is completed.



Attention:

1. Do not lower the car from the lift when there is no pressure on the air suspension / air suspension module.
2. Precautions for installing air pipe:

Remove the original air line before inserting it into the new air pipe connector
Remove the old factory air line connector.

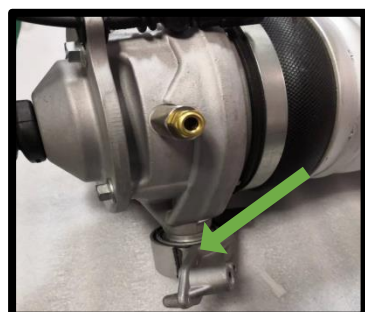


1、original joint

2、Slide the threaded
Part along the pipe path

3.Remove the collet

4. Remove the threaded part,
disassembly is complete



1. Remove and dispose of
shipping pins



2. Insert the air line into the
connector and press until it
is felt to engage



3. After entering the air line, pull
the air line outward to lock and
ensure secure connection