



# Fitting Instructions

TOWBAR  
For Chrysler PT Cruiser  
July 2000-

**CH10AU**  
**for**  
**CH10A &**  
**CH10AQ**

## MATERIALS

A	1	Towbar Mainframe
D	2	Angle
E	4	M12 x 35 x 1.75mm Bolts, Nuts, Lock Washers and Flat Washers (25mm O.D)
F	1	M10 x 25 x 1.5mm Bolt, Nut, Lock Washer and 2 Flat Washers (20mm O.D)
G	2	M12 x 100 x 1.75 Bolts and Nyloc Nuts ( <b>Grade 10.9 – Torque setting 139Nm</b> )
X	8	Existing M10 High Tensile Bolts ( <b>Grade 10.9. - Torque setting 73Nm</b> )
ZEP1	1	Electrical Plate
ZEQ1	1	Electrical Plate Angle
CB	2	M16 x 50 x 2.0mm Bolts, Nuts and Lock Washers

## For use with either

**CH10 Flange neck option – ZF3008.** **Note:** This towbar must be used with either a Witter Towball (part number Z11) or Class A50-1 or A50-X towball dimensionally Conforming to A50-1 with a 'D' and 'S' value greater than or equal to that of the towbar.

**CH10Q Detachable neck option – ZQ3008.** Please refer to ZQ fitting instructions for installation

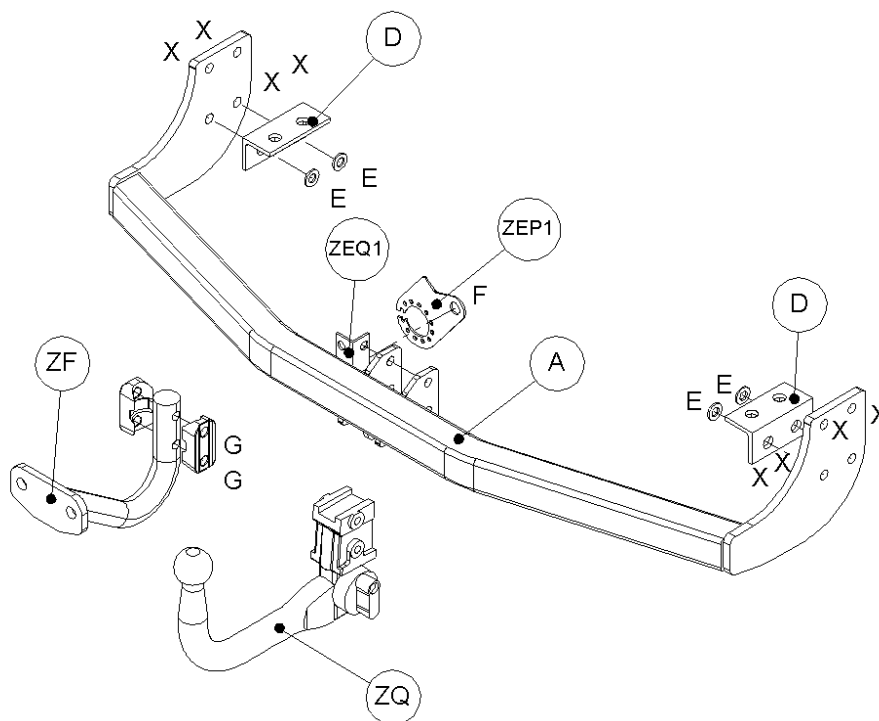
## FITTING

1. Lower spare wheel. Lower rear exhaust (undo 3 rearmost exhaust hangers (don't allow exhaust to drop fully) and release earthing strap). Remove lashing eyes, hand to customer, and keep bolts for use at X.
2. Offer Towbar Mainframe (**A**) up and loosely attach using Bolts (**X**).
3. Attach Angles (**D**) to chassis rails using remaining Bolts (**X**). Attach Angles (**D**) to Towbar Mainframe (**A**) using Bolts (**E**).
4. Attach Neck option (see separate fitting instruction) and Electrical Plate Angle (**ZEQ1**) on left side using fixings (**G**). Attach Electrical Plate (**ZEP1**) using Bolts (**F**).
5. **Tighten all Bolts**, (Note: Bolts (**X**) have a torque setting of **73 Nm**).
6. Refit exhaust, refit spare wheel.

## **WHEN NOT TOWING THE TOWBAR NECK MUST BE REMOVED SO THE NUMBER PLATE IS VISIBLE**

**Recommended torque settings:** Grade 8.8 bolts: M10 - 53 Nm, M12 - 95 Nm, , M16 - 214 Nm

**Grade 10.9:** M12 – 139Nm, M10 – 73Nm



W0001CH10AU-FIT\$010809150000