



CLUTCHTECH



TSB-163

Commodore pivot ball height adjustment

In certain V6 & V8 Commodore models, it is necessary to check the pivot ball height to ensure that the clutch assembly will allow for complete release and to improve wear characteristics. In order to achieve this, pivot ball height measurements must be taken and adjusted to the guides given on this sheet.

In order to adjust the pivot ball, loosen the locknut and wind the pivot ball in or out to make the height adjustment. When the desired height is achieved, tighten the locknut in position and remeasure the height.

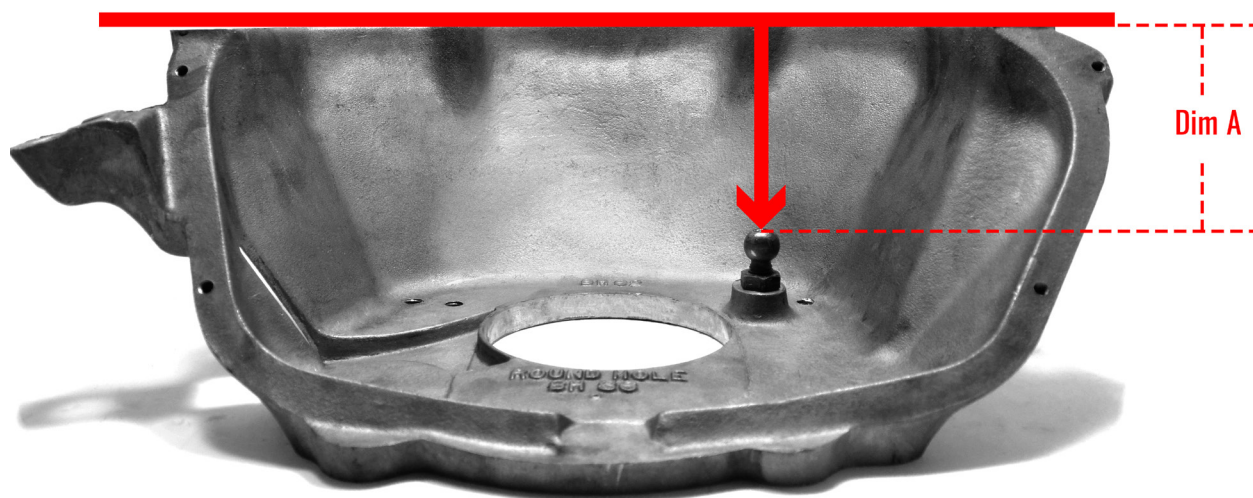
The height from the top of the pivot ball to the face of the bellhousing (Dim A) must be

V6 model commodores: 106mm

V8 model commodores: 108mm

Pivot Ball Lock Nut Torque Specification : 25-34 NM

It is also suggested that the clutch cable adjustment is checked to ensure that correct actuation can occur. Set the cable adjustment to achieve desired release point(1.5 to 2") off the floor.



LEADING BRANDS

CLUTCHPRO CLUTCHPRO COMMERCIAL



For further support, please contact your distributor and/or visit our website.

AU site: australianclutch.com.au
US site: xclutchusa.com