



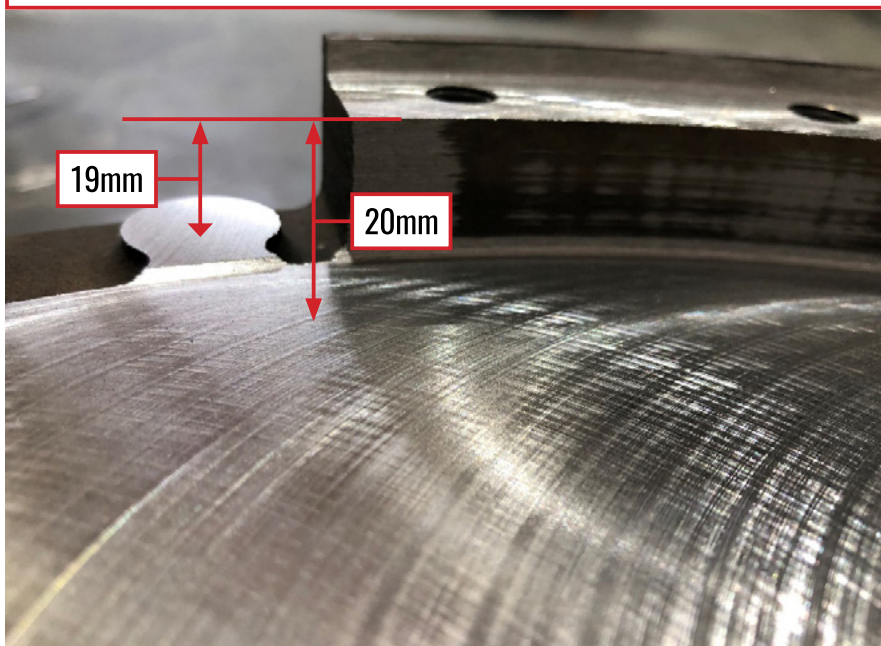
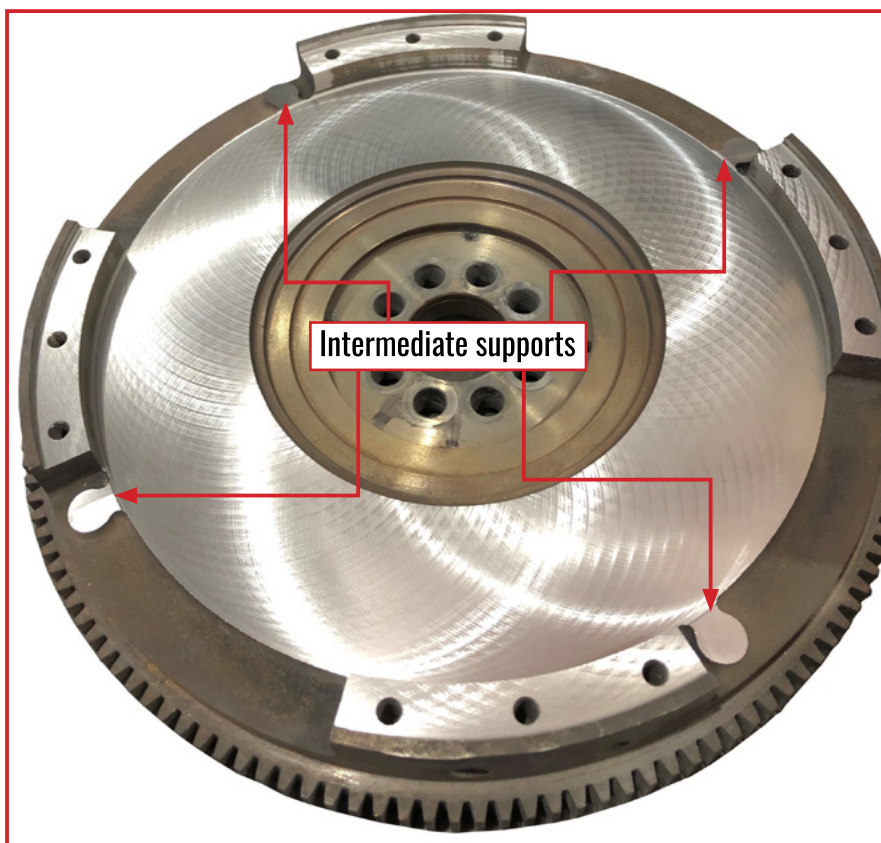
# CLUTCHTECH



## TSB-344

### Flywheel machining

When installing this clutch kit, if the flywheel is machined it is important that the intermediate supports are also machined and kept within specification relative to the flywheel step. After machining, the step should be 20mm to the flywheel friction surface and 19mm to the intermediate supports.



#### LEADING BRANDS

CLUTCHPRO CLUTCHPRO  
COMMERCIAL



For further support, please contact your distributor and/or visit our website.

AU site: [australianclutch.com.au](http://australianclutch.com.au)  
US site: [xclutchusa.com](http://xclutchusa.com)