

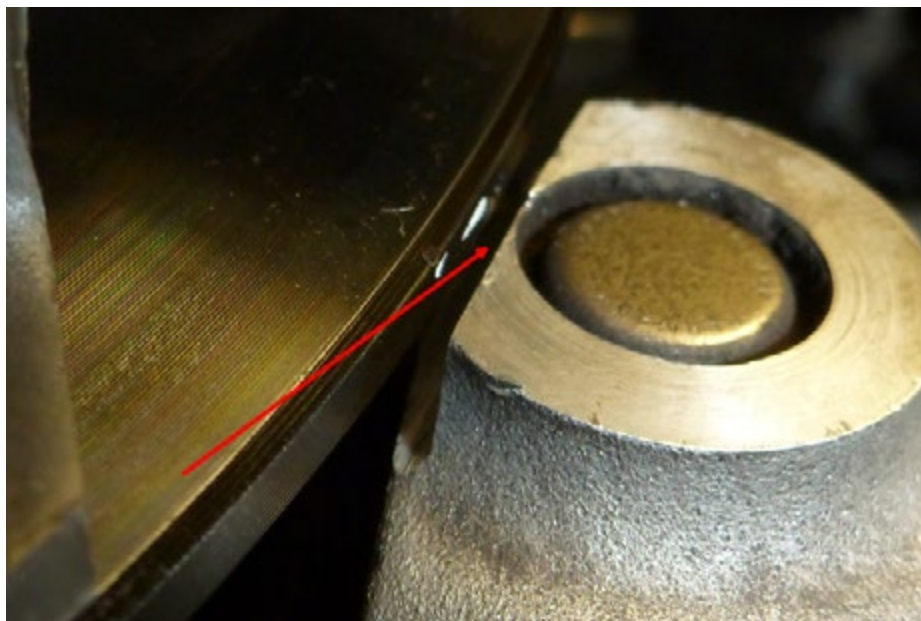
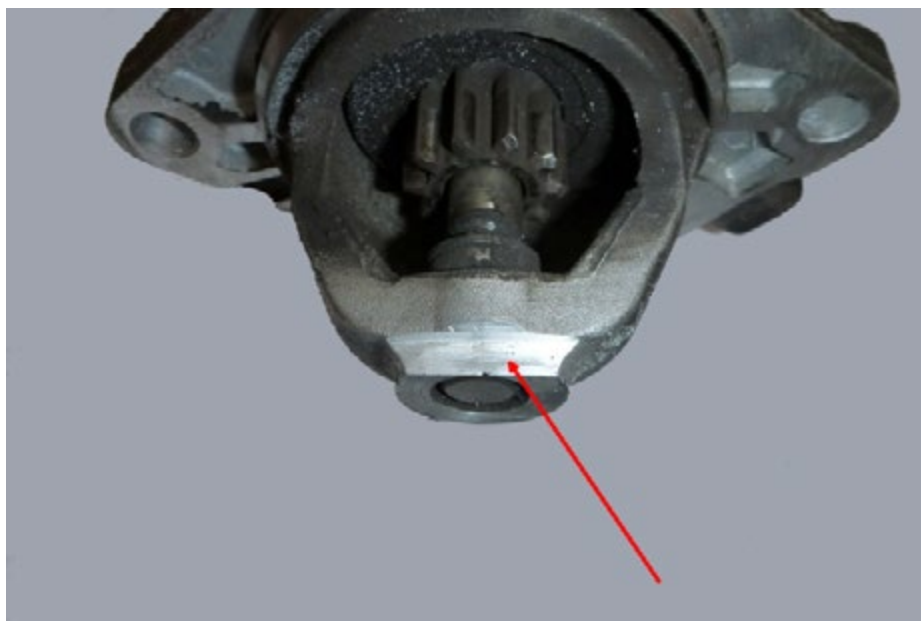


TSB-FD11

This is in relation to FFD126C & Starter Motor Clearance

The clearance between the starter motor and flywheel need to be checked.

The starter motor housing may need to be modified if there is insufficient clearance.
(See picture below)



LEADING BRANDS

CLUTCHPRO CLUTCHPRO
RACING



australianclutch.com.au

1800 CLUTCH (258824)