

TECHNICAL

BULLETIN

**TECH
MATE**

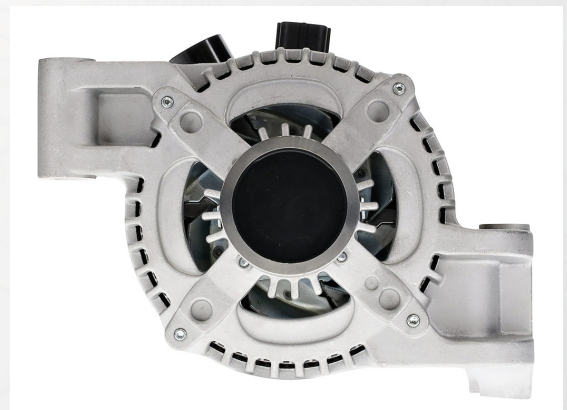
Bulletin Ref: TB19a

Ford Broken Wire

AAL1841

Possible issues relating to charging problems:

1. One Amp fuse is sometimes defective, this can be found in the main fuse box in the engine bay
2. The wiring harness from factory is too tight resulting in broken wires in the harness, the wires are mostly broken under headlight
3. Corrosion inside the multi connector on the rear of the unit is also common.

**TECH
MATE**

For further information on this or any other issue contact the
Apec technical team by phone or email at:
Phone: 01174 288090 Email: technical@apecautomotive.co.uk



FOLLOW US
#TechMate | @TechMateAuto