

Product info sheet

Robert Bosch

0445110573

Special tools needed?

No

Product specific information

Programming

Yes

IMA code (7 characters)

Unlocking

No

Adaption values reset

Yes

Reset adaptive values

Bleed

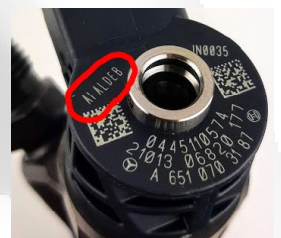
Yes

ignition on for 30 seconds

adjustment at mounting_1

No

adjustment at mounting_2



Tightening torques

Injector/ retaining clamp

15 Nm + 90° + 90°

High Pressure pipe nuts

1: 5 Nm 3: 35 Nm

Assembly instructions

Replace sealing washer

Recommendation: replace fuel filter

Replace tension bolts

Recommendation: use ceramic grease

Core charge terms:

- externally intact,
- no mechanical damage,
- not dismantled,
- no heavy corrosion.

