



KNOW HOW

TECHNICAL BULLETIN

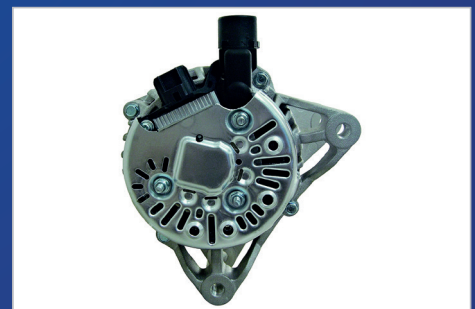
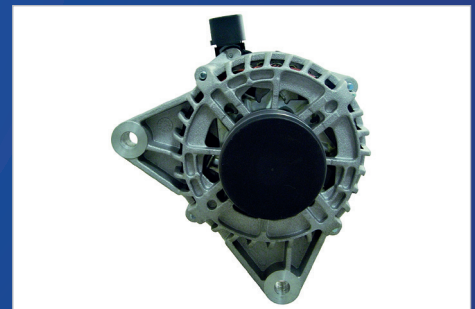


NAL1424 - Ford Alternator Broken Wire

Bulletin Ref: TB19n

Possible issues relating to charging problems:

1. One Amp fuse is sometimes defective, this can be found in the main fuse box in the engine bay.
2. The wiring harness from factory is too tight resulting in broken wires in the harness, the wires are mostly broken under headlight.
3. Corrosion inside the multi connector on the rear of the unit is also common.



Technical Support

Contact our expert technical team
on 03333 136597 or email
NAPAttechnical@allianceautomotive.co.uk



TechMate Support

Book a TechMate visit today!
Contact the team on 01174 288090
or email info@techmateteam.co.uk