

# Fitting Instructions



SKU

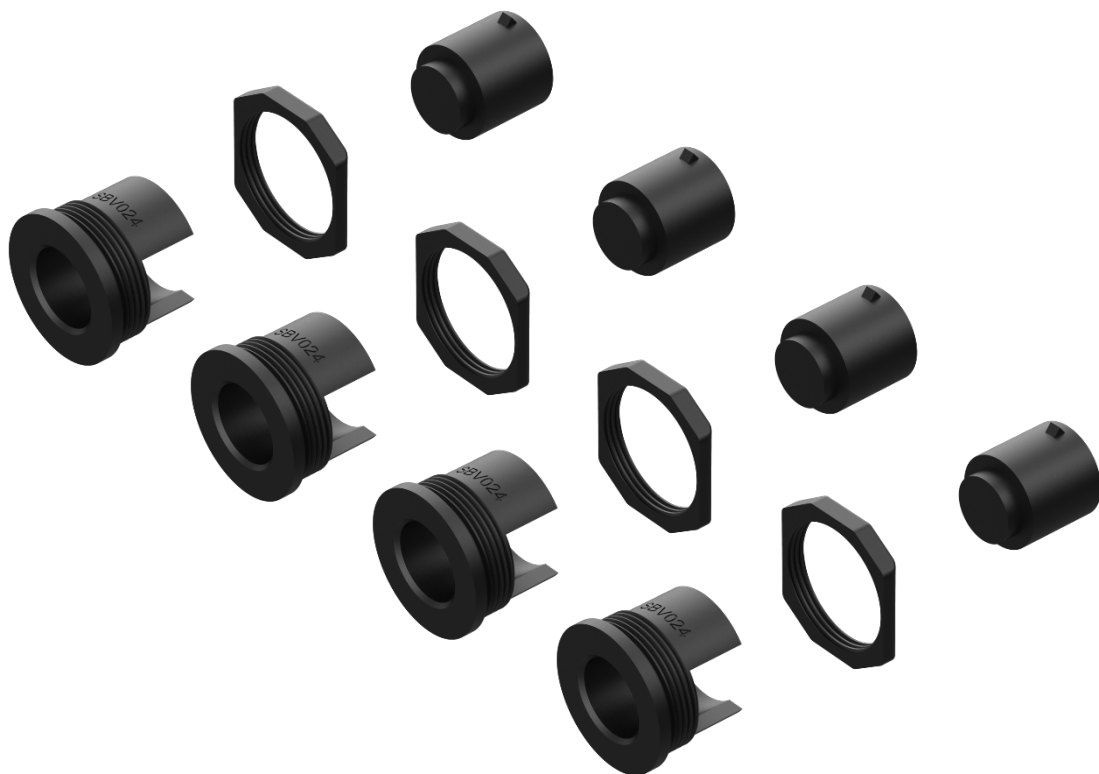
**RSM024**

PRODUCT

**Reverse Sensor Mounting Kit**

SPECIFICATIONS

- Approx. Fitment Time: 45 Minutes
- Suits: Ford Transit / Transit Custom, VW Transporter T6 / Crafter, Mercedes Sprinter / Vito, Renault Master / Trafic, Mitsubishi Express



TOOLS REQUIRED

- No Tools Required

IN THIS GUIDE

- Fitment Instructions

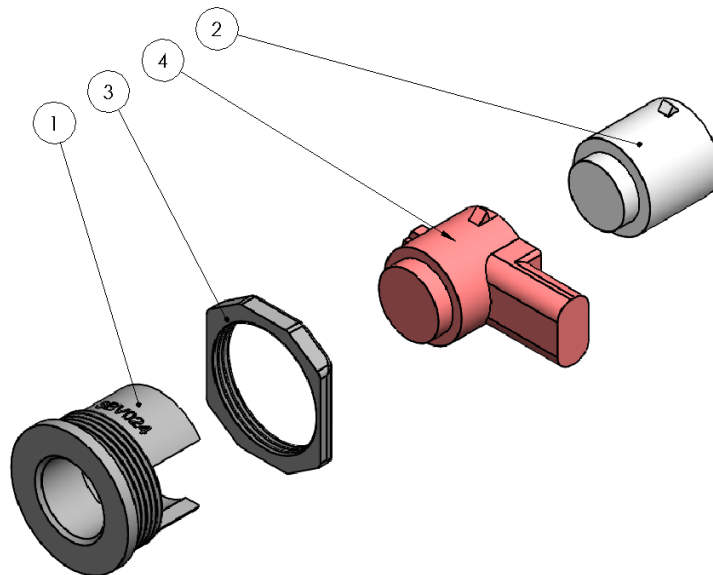
# Important Information



## Warning:

- This kit is designed to relocate the RPA (Reverse Park Assist) sensors from the vehicle bumper bar to the TAG galvanized step (TRS002 or TRS001).
- It is recommended that the sensor(s) be mounted to the TAG step in the exact orientation they were mounted in the OEM bumper.
- The installation of this kit may require the OEM sensor harness to be elongated to reach the new sensor location. Should the harness(s) need elongation it is suggested that new connections be made by stripping the wires attaching the extension wires by solder.
- The bumper plugs provided are to fill the hole in the OEM bumper where the sensor was removed.
- Contact an authorised TAG distributor or the TAG fitment center - (07) 3208 3022 - if further information is required.

ITEM NO.	DESCRIPTION	QTY.
1	Sensor Collar	4
2	Blanking Plug for Bumper	4
3	Collar Nut	4
4	Reverse Sensor <b>(Not Included)</b>	



---

## Reverse Sensor Mount Instruction.

---

1. Insert sensor collar into hole of TAG step. Fasten the collar with the collar nut against the inside face of the step.
2. Insert the sensor into the collar until an audible click is heard.
3. Adjust the orientation of the sensor collar if necessary.
4. If possible, route the sensor harness on the adjacent cable rail and tie off with cable ties.

