



KS Grey cast iron cylinder sleeves

Grey cast iron cylinder sleeves are now available for reconditioning cylinder bores. The cylinder sleeves are intended for use for any cylinder repairs for which no finished or semi-finished liners are commercially available. We can supply cylinder sleeves in six different sizes from which you can make almost all dry and even simple wet cylinder liners, provided you have the appropriate machine equipment and the relevant know-how.

Application examples:

- Production of standard cylinder liners (wet and dry) which are no longer obtainable.
- Production of cylinder liners with special dimensions.
- Repairs on worn-out cylinder liner counterbores.
- Repair of "irreparable" coated cylinder bores in aluminium engine blocks.

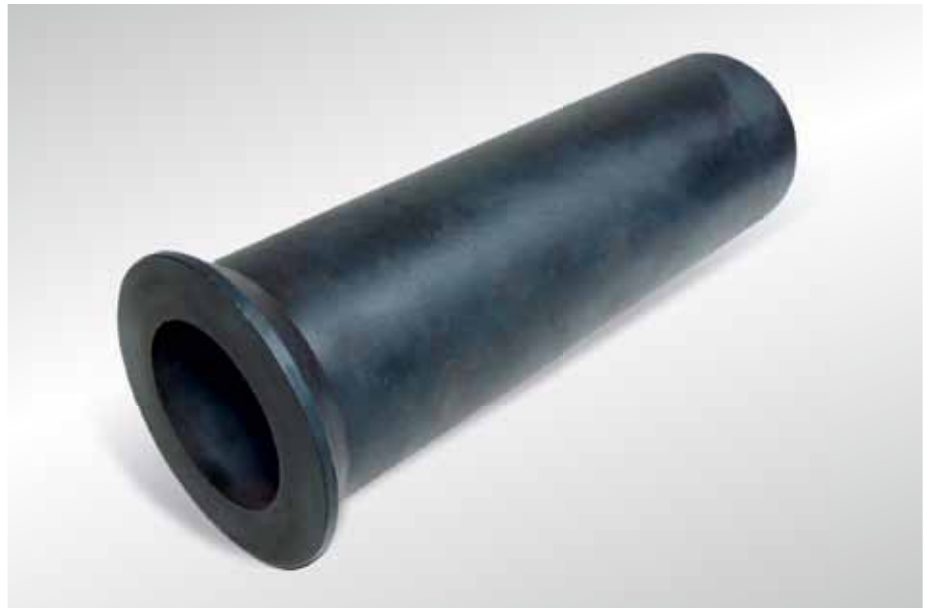
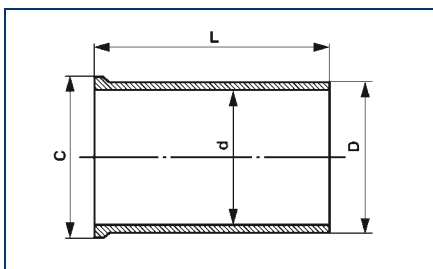


Fig. 1 Cylinder sleeve



Whether or not aluminium or grey cast iron cylinder blocks can be reconditioned (relined), depends primarily on the degree of damage and the design conditions of the cylinder block.

The surfaces of the cylinder sleeves are partially premachined. For this reason, please allow a material cut-off of 4 mm for the inside and outside diameter.



D	d	C	L	KS No.
80	60	98	270	89 573 190
85	65	104	275	89 574 190
90	70	109	290	89 575 190
100	70	119	365	89 576 190
115	80	134	275	89 577 190
120	90	140	345	89 569 190

Fig. 2 (Dimensions in mm)

The right of changes and deviating pictures is reserved. For exact details about applications, please refer to our current catalogue / CD / OnlineShop.