



Image 3: Gearbox input shaft with increased spline wear

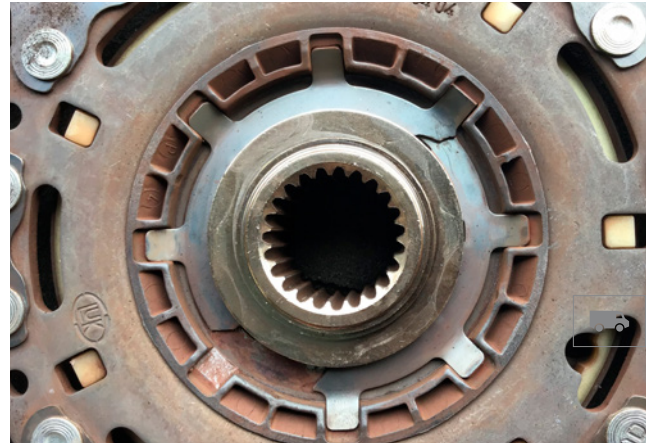


Image 4: Wear of the clutch disc splines and a broken ring-shaped leaf spring

Additional important procedures and parameters:

- Check the wear of other components adjacent to the clutch (flywheel, seals, release system, etc.).
- The ring-shaped leaf spring can also be damaged if the axial play of the crankshaft main bearings is out of tolerance (e.g., axial play > 0.25 mm).
- Use new clutch mechanism fixing bolts.
- Follow the correct tightening order and tightening torque of the clutch bolts to the flywheel.
- Lubricate the gearbox input shaft splines with a small amount of suitable lubricant.
- Distribute the grease by sliding the clutch disc on the input shaft 5–6 times, then wipe off the excess grease using a clean cloth.
- Carefully remove the clutch diaphragm spring retainer after installing the clutch to the flywheel.
- No resetting of the clutch wear adjustment is permitted.
- Use LuK special tool Art.-No. 400 0237 10 when removing in case of reuse of the clutch.
- If the clutch does not need to be reused, there is no need to use LuK special tool Art.-No. 400 0237 10 for removal.

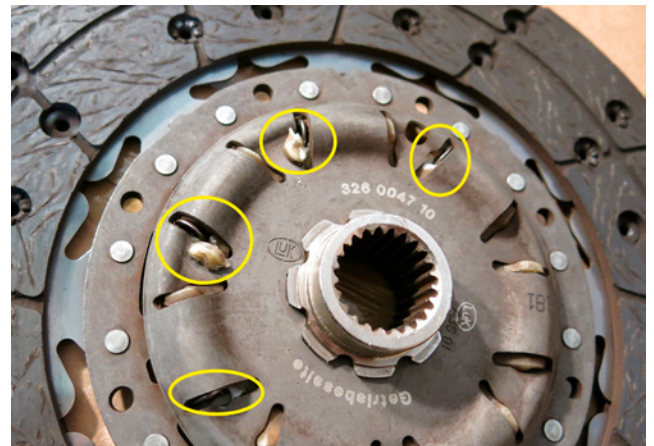


Image 5: Damage to the plastic disc torsional damper guides

Please observe the vehicle manufacturer specifications!

You want more? We can help!

Phone: +44 (0) 1432 264 264
 Fax: +44 (0) 1432 375 760
 aftermarket.uk@schaeffler.com
 www.repxpert.co.uk