



PRODUCT SHEET

ARTICLE NUMBER: GAT5299

DESCRIPTION: PSA EB2 GDI PureTech Engine Exhaust Camshaft Locking Tool

INTRODUCTION

The PSA Group EB2 PureTech engine installed in a range of Citroen, DS, Peugeot, Opel and Vauxhall models has undergone a re-design from 2018 to facilitate a HP GDI fuel system. Although this resulted in some architectural differences it still utilises a timing belt running in an oil mist design, known as belt-in-oil. There is a known concern that the belt-in-oil may exhibit swelling or bloating and / or deterioration from abrasion before the service / replacement interval is due.

GAT5299 is an updated tool which came into production for vehicles from 2020. The tool is specifically designed to sit in the oil way of the exhaust camshaft, which can then be bolted in place to lock the exhaust camshaft. This procedure will render the need to remove the vacuum pump and thus saving time. This tool is used in conjunction with the flywheel pin and inlet camshaft setting tool included within Tool kit GAT5255.

Associated tools:

GAT5255 kit allows the physical checking of the belt width for signs of swelling and the locking tools will enable a check to confirm if the belt has jumped as a direct result of deteriorated teeth by confirming the crankshaft, inlet and exhaust cams are still correctly timed. The timing belt width should be checked in line with manufacturers recommended intervals.

GAT5257 crankshaft seal installer is used in conjunction with the existing bolts from the crankshaft pulley to drive the crankshaft seal to its final position within the engine casing.

GAT5148A kit is used as an 'Overhaul' kit, as this would involve the removal of the cylinder head to set/lock the camshafts in the 'timed position'.

CONTENT

ITEM	ARTICLE NUMBER	DESCRIPTION	OE REFERENCE
7468-11308	GAT5299	CAMSHAFT LOCKING TOOL	0109-2E1/0109-2E2

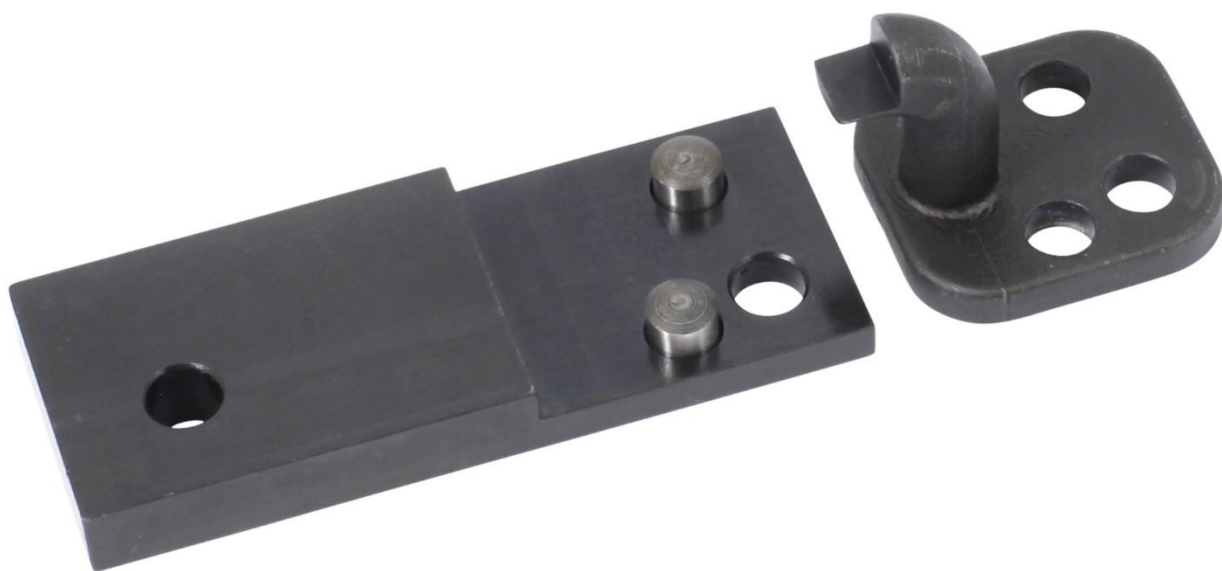


PRODUCT SHEET

APPLICATION INFO

PSA 1.2 EB2 3-cylinder GDI PureTech petrol engine (EB2ADT variants) in Citroën, Peugeot, DS, Opel and Vauxhall covered by GAT5255 tool kit.

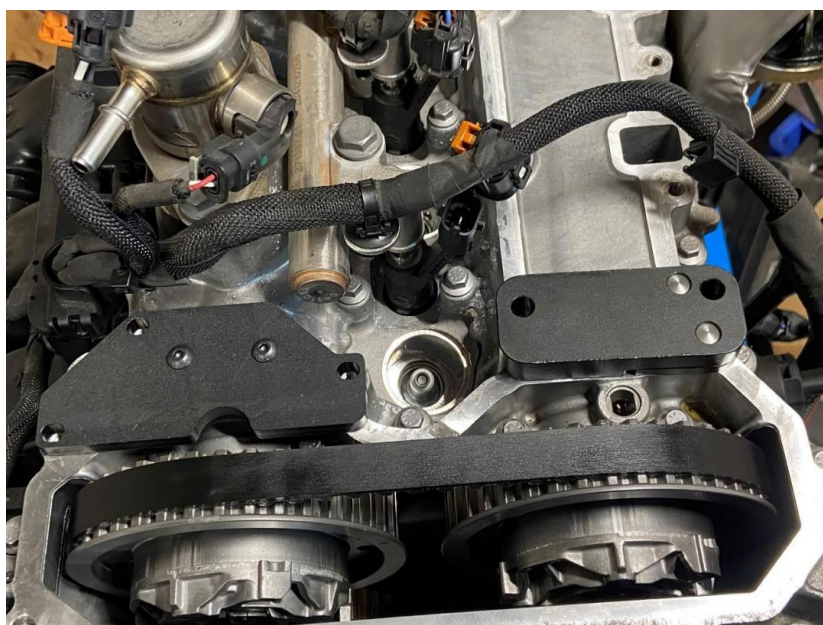
IMAGE





PRODUCT SHEET

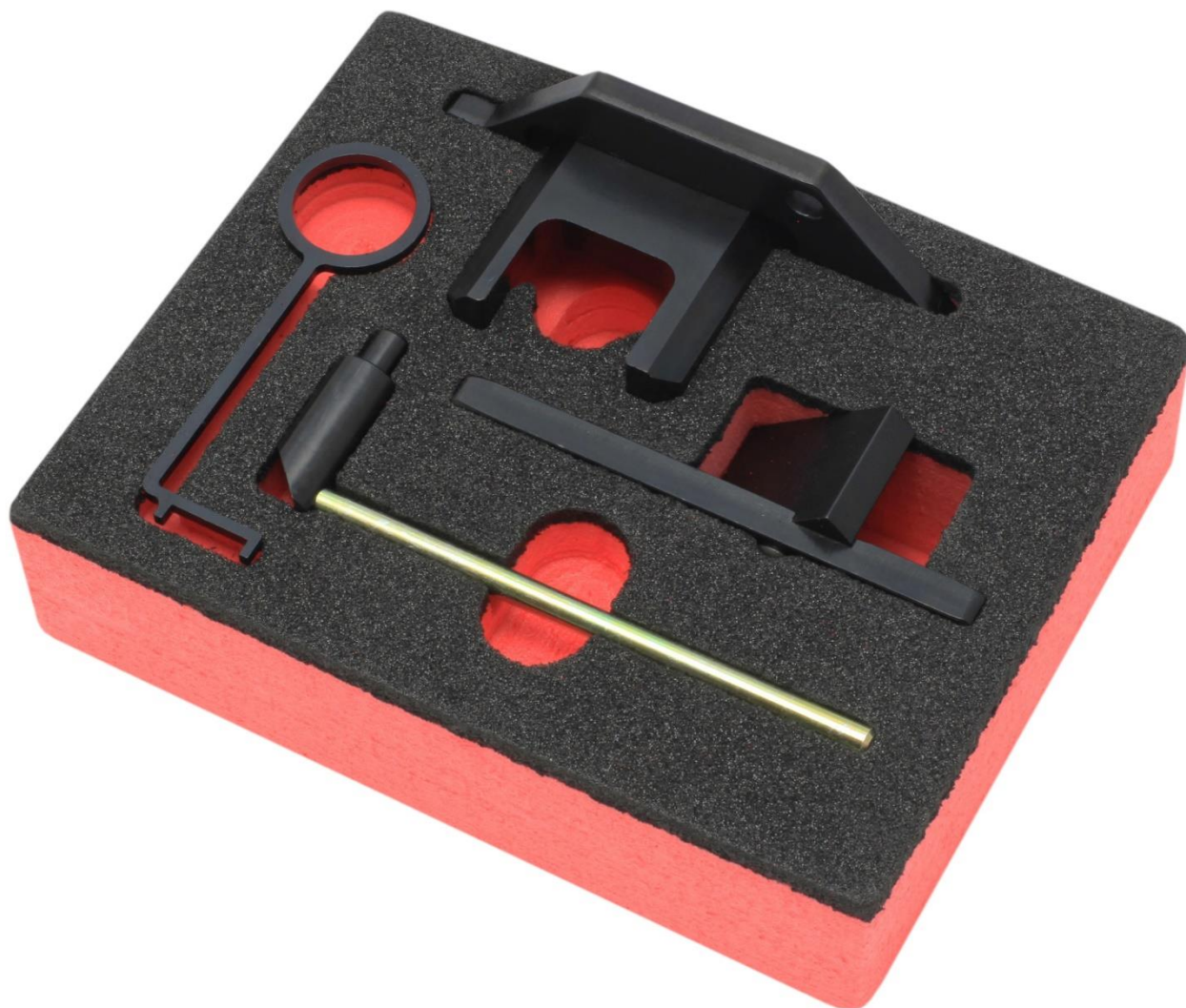
Application Image





PRODUCT SHEET

Associated Tools



7468-11283 – GAT5255 – Belt-in-oil Timing Check Kit



PRODUCT SHEET



7468-11290 – GAT5257 – Crank Seal Installer



7468-12001 – GAT5148A – Engine Setting / Locking Tool Kit