



# PRODUCT SHEET

ARTICLE NUMBER: GAT5257

DESCRIPTION: Crankshaft Seal Installer - PSA Citroën-Peugeot 1.0/1.2 EB Engines

## INTRODUCTION

GAT5257 Crankshaft Seal Installer can be used in conjunction with the existing bolts from the crankshaft pulley to drive the crankshaft seal to its final position within the engine casing.

The crankshaft seal is installed to a final position that is below the surface of the engine casing, standard installation adaptors will not install the seal to the correct position in the engine casing.

PSA procedures dictate that the crankshaft seal must be installed to a specific depth, then retained in position for a prescribed length of time to allow the seal to settle in this position, before removing crankshaft seal installation tool.

GAT5257 enables the user to set and retain the seal at the final position and is suitable for use on the latest 1.0 VTi & 1.2 VTi 'EB' series petrol Belt-in-Oil engines fitted in a wide range of vehicle models across Citroën-Peugeot, Opel-Vauxhall and Toyota model ranges.

Similar to OE tool ref: P-0109-3 (Part 'A' only) and EN-52133 (Crankshaft Seal Installer only).

## TITLE

ITEM	ARTICLE NUMBER	DESCRIPTION	OE REFERENCE
7468-11290	GAT5257	CRANK SEAL INSTALLER	EN-52133

## APPLICATION INFO

All EB0 and EB2 engine variants covered by GAT5148A Engine Setting/Locking Kit.



# PRODUCT SHEET

IMAGE

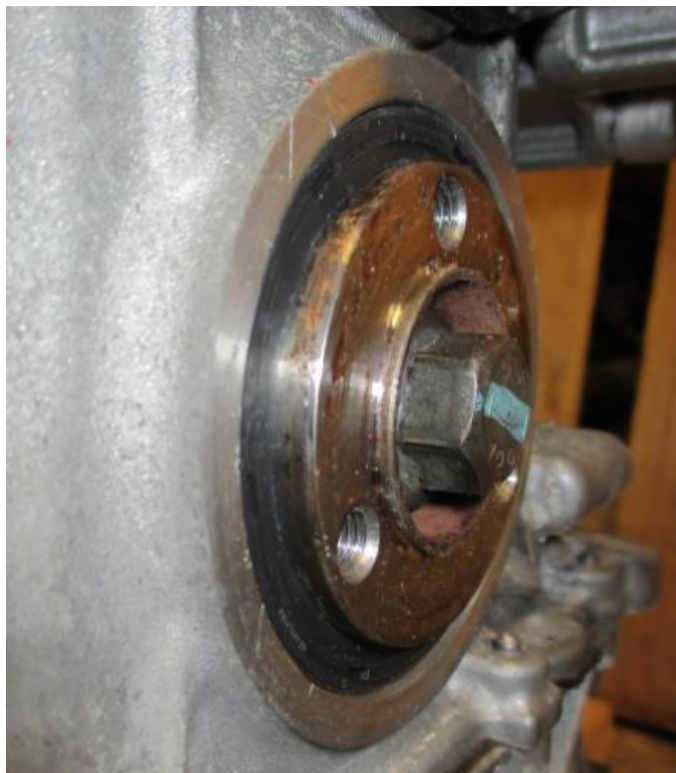


Application image





# PRODUCT SHEET



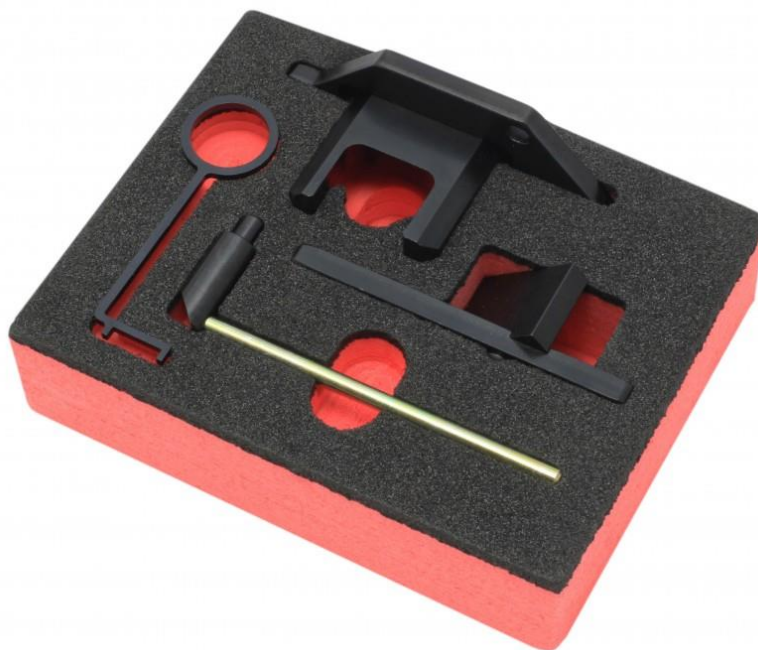
## Associated Tools



7468-12001 - GAT5148A - Engine Setting / Locking Tool Kit



# PRODUCT SHEET



7468-11283 - GAT5255 - Engine Timing Belt Check Kit



7468-11253 - GAT4939 - Universal Handle for Crankshaft Pulley Holding Tool