

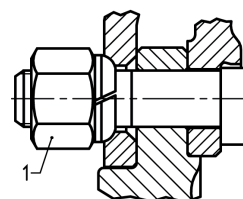


Tightening torque

Centred around wheel bolt / Fig. no. 1

Stufe 1 = 60 Nm

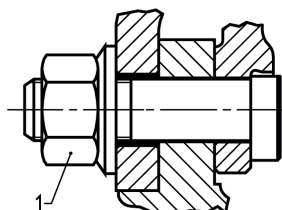
Stufe 2 = 450 Nm



Centred around centre / Fig. no. 1

Stufe 1 = 60 Nm

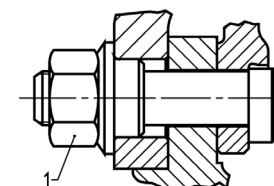
Stufe 2 = 600 Nm



Centred around centre /
aluminium wheels / Fig. no. 1

Stufe 1 = 60 Nm

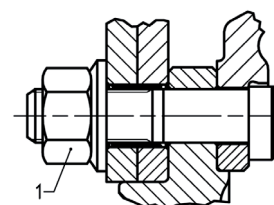
Stufe 2 = 600 Nm



Centred around centre / Fig. no. 1

Stufe 1 = 60 Nm

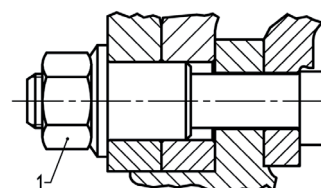
Stufe 2 = 600 Nm



Centred around centre /
aluminium wheels / Fig. no. 1

Stufe 1 = 60 Nm

Stufe 2 = 600 Nm



Please check tightening torques regularly !

Use a torque spanner to ensure that the specified torques are accurately maintained.

If the wheels were off, check and re-tighten the wheel nuts after about 200 km of driving.

