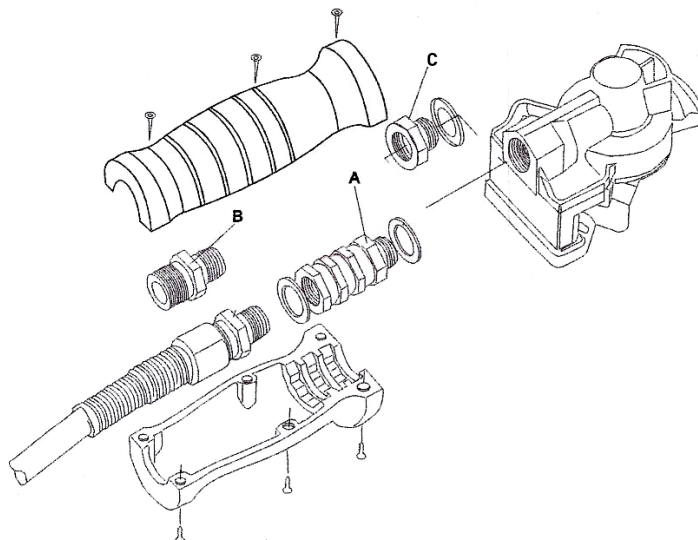




ASSEMBLY



- 1) Work may only be carried out on a pressure-free system.
- 2) Unscrew the air connection of the spiral hose from the coupling head.
- 3) Screw the connector (A) in conjunction with a sealing ring (diameter: 16mm) into the coupling head. If necessary, also use the adapter (C) (depending on the coupling head).
- 4) Screw the spiral hose and a sealing ring (diameter: 16 mm) into the connector (A); if necessary, also use the adapter (B) (depending on the spiral hose version).
- 5) Assign the moulded handle recesses to the correct lines. Place the screw connected spiral hose and connector (A) components in the moulded handle recesses and screw using 6 screws each.
- 6) Apply compressed air to the fully assembled compressed air connection and coupling head and test for both sealing and functionality.

