

# STABILUS POWERISE

## INSTALLATION INSTRUCTIONS



### Part Number: 176200

Make: Audi

Model: A3

Generation: 2020

### OE-Numbers:

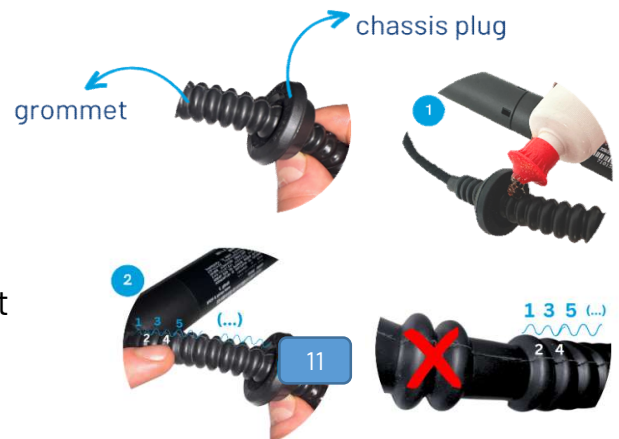
8Y4 827 851 E

8Y4 827 851 F

*Note: Only authorized personnel should perform the installation. Drives must be replaced in pairs. The appearance of the Stabilus drive may differ from the original but does not affect functionality. Always refer to the manufacturer's guidelines for specific instructions and safety precautions.*

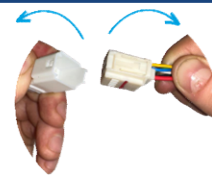
## Step 1: Prepare the grommet

- Apply a drop of dish soap to facilitate plug movement (1)
- Slide the chassis plug onto the 11th rib. (2) Note: Do not count the first two ribs next to the drive
- Adjust the grommet's length by holding the grommet, not the drive



## Step 2: Dismantle the car's panel

- Remove the panel to access the connector
- Disconnect the connector from the vehicle, noting the connectors' appearance may differ



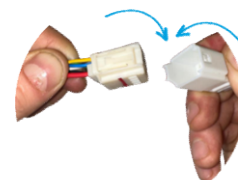
## Step 3: Remove the drives

- Support the tailgate/trunk lid while removing the drives one at a time
- Release the clip at the end fittings



## Step 4: Install Stabilus Replacement Drives

- Install the Stabilus replacement drives
- Link the cables from the Stabilus drive to the counterpart connector
- Make sure you put the left hand drive on the left side and the right hand one on the right side





### Step 5: Insert the Grommet

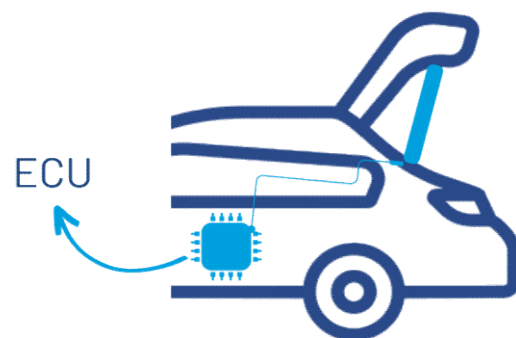
- Ensure proper insertion of the grommet into the vehicle
- Use a drop of dish soap to ease installation
- Confirm the grommet length is correct
- Prevent contact of the grommet to the bodywork (except for cable routing) or placing the grommet under tension during this process
- If necessary, readjust



### Step 6: Set up control unit

After reassembling the panel:

- Close tailgate manually, until lock is engaged
- Open and close the hatch automatically (learning run)



Caution: Be mindful of the Push-To-Run function in some electric tailgate systems; moving the tailgate too quickly during setup can cause complications.

### Step 7: Set Desired Hatch Position

- Manually open the hatch to the desired position
- Program the drive accordingly by pressing and holding the closing button on the hatch until a signal is received.
- Make sure the tailgate only opens to the programmed position now, by closing and opening the tailgate automatically again

