

MEYLE-PD: Advanced performance and design.

Two component brake discs

Highly resistant under toughest conditions ✓

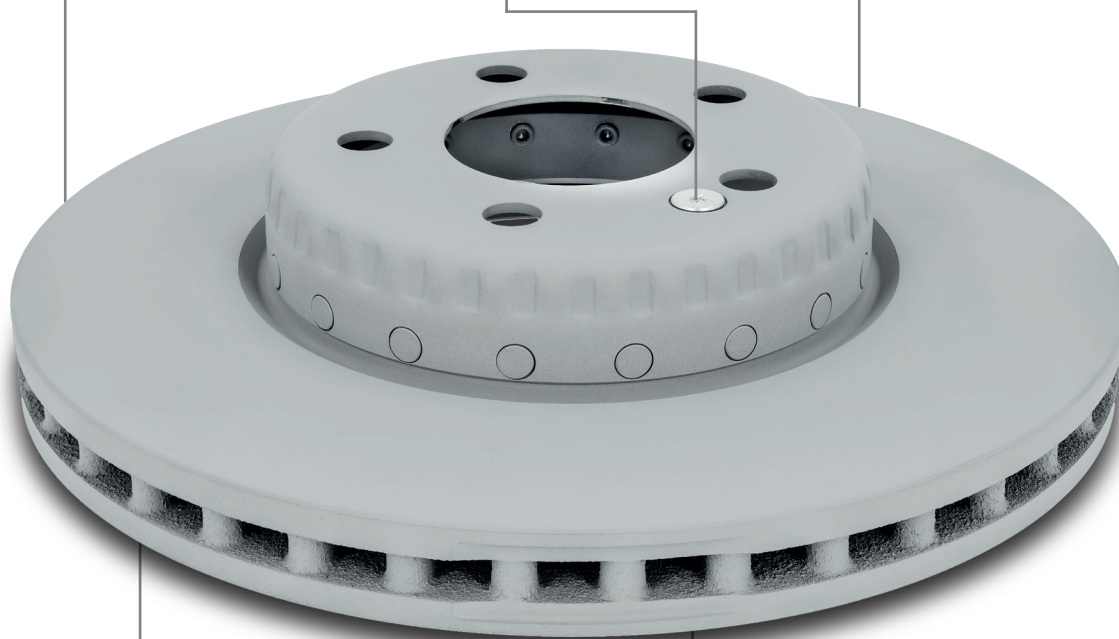
- The carbon content of the grey cast iron (material of the brake disc) is increased by a special high carbonization (HC) process avoiding „warping“ at high temperatures.

Easy installation ✓

- 99% of our two component brake discs are being delivered with fixing screw

No degreasing necessary ✓

- With our high-grade finish that protects the brake disc, there is no degreasing necessary.



Easy recognition in the workshop ✓

- Two component disc with an aluminium or stamped steel hat riveted to the cast iron friction ring for easy recognition in the workshop. Same weight reduction and low offset as the OE part.

Brilliant appearance ✓

- Brilliant appearance thanks to long lasting anti-corrosion protection



**Advanced
performance and design**



**High
Carbonized**



**Easy
Installation**



**No degreasing
necessary**