

SWAG 50 93 4748

To fit: Ford Fiesta VI 2008 – 2017



Axle Beam Mount for rear axle support

Problem

Squeaking noise from rear of vehicle when travelling on uneven road surfaces, leading to uneven tyre wear and inconsistent vehicle handling.

Cause

Rear axle beam mounting worn and deteriorated causing squeaking noises eventually leading axle misalignment.

Solution

Before commencing this repair, it is advisable to use an appropriate special tool to remove and install these axle beam mounts to eliminate the risk of damage and misalignment to the new parts.

It is recommended to replace both axle beam mountings for a reliable repair. To replace the axle beam mountings, the complete rear axle is required to be lowered from the vehicle, but not completely removed as the mounting bushes can be replaced in place.



Fig. 1

Raise the vehicle on a wheel free lift, remove the rear wheels and support the axle using a transmission jack.

Unfasten the ABS wheel speed sensor wires and parking brake cables from the axle beam to allow flexibility when lowering the axle.

Slacken the two mounting bush retaining bolts. (Fig.1)

SWAG 50 93 4748

To fit: Ford Fiesta VI 2008 – 2017

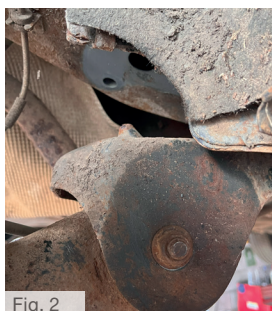


Fig. 2

Remove the three securing bolts retaining the brackets from each side and gently lower the axle, then remove the bush retaining bolts. (Fig.2)

To remove the axle beam mounting, first mark the alignment of bush to the axle and extract using the special tool. (Fig. 3 & 4)

Clean all mating surfaces, to be free of corrosion and road debris and apply a small amount of petroleum jelly or lithium grease around the new bush to aid insertion. Align the new bush to ensure the correct orientation before pressing the new mounting into the axle, repeat for the other side. (Fig. 5 & 6)

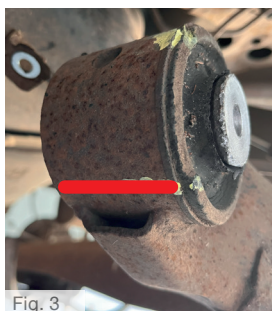


Fig. 3

With the new axle beam mountings replaced, refit the brackets to each side and raise complete axle into position tighten the body bracket bolts to 125 Nm, resecure the ABS speed sensor wiring and hand brake cables. (Fig 7 & 8)

Lower the vehicle and support the axle on axle stands. Tighten the axle beam mounting bolts to 80 Nm then 120 ° with the rear suspension in the neutral position.



Fig. 4

Raise the vehicle and refit the wheels and check the axle alignment.



Fig. 5



Fig. 6



Fig. 7



Fig. 8

For more technical information please visit: partsfinder.bilsteingroup.com