



KOLBENSCHMIDT



PIERBURG



SPECIAL ORIGINAL EQUIPMENT (SOE)

HIGH-QUALITY ENGINE COMPONENTS FOR A
DIVERSE RANGE OF APPLICATIONS

OUR **HEART** BEATS FOR YOUR ENGINE.



MOTORSERVICE
RHEINMETALL AUTOMOTIVE



MOTORSERVICE GROUP

QUALITY AND SERVICE FROM A SINGLE SOURCE

The Motorservice Group is the sales organisation for the worldwide aftermarket activities of Rheinmetall Automotive. It is a leading supplier of engine components for the independent aftermarket. With the premium brands Kolbenschmidt, Pierburg, TRW Engine Components and the BF brand, Motorservice offers its customers a wide and comprehensive range of top quality products from a single source. As a problem solver for trade and repair shops, the corporation also offers an extensive service package. Motorservice customers benefit from the combined technical know-how of a large international automotive supplier.

RHEINMETALL AUTOMOTIVE

RENOWNED SUPPLIER TO THE INTERNATIONAL AUTOMOTIVE INDUSTRY

Rheinmetall Automotive is the mobility division of the technology corporation Rheinmetall Group. With its premium brands Kolbenschmidt, Pierburg and Motorservice, Rheinmetall Automotive is a global leader in the relevant markets for air supply systems, emission control and pumps and in the development, manufacture and spare-parts supply of pistons, engine blocks and plain bearings. Low pollutant emissions, good fuel economy, reliability, quality and safety are the main driving forces behind the innovations of Rheinmetall Automotive.



KOLBENSCHMIDT



PIERBURG



Edited by:

Motorservice, Technical Market Support

Layout and production:

Motorservice, Marketing
DIE NECKARPRINZEN GmbH, Heilbronn

This document must not be reprinted, duplicated or translated in full or in part without our prior written consent or without reference to the source of the material.

All content including pictures and diagrams is subject to alteration. No liability accepted.

Published by:

© MS Motorservice International GmbH

Liability

All information in this brochure has been carefully researched and compiled. Nevertheless, it is possible that errors have occurred, information has been translated incorrectly, information is missing or the details provided have changed in the intervening time. As a result, we are unable to provide any guarantee nor to accept any legal liability for the accuracy, completeness, currency or quality of the information provided. We hereby waive all liability for any damages, whether direct or indirect in nature and whether tangible or intangible, resulting from the use or misuse of information or from incomplete or incorrect information in this brochure, unless proven to be the result of deliberate intent or negligence on our part. Likewise, we shall not be liable for damage arising because the engine reconstructor or mechanic does not have the necessary technical expertise, the required knowledge of, or experience in repairs. The extent to which the technical methods and repair information described here will apply to future engine generations cannot be predicted and must be verified in individual cases by the engineer servicing an engine or the workshop operator.



SPECIAL ORIGINAL EQUIPMENT (SOE)

Motorservice specialises in supplying the aftermarket with engine components quickly and reliably, worldwide. A special division supplies the premium products of the Rheinmetall Automotive Group for high-volume parts replacement and for OE spare parts. Another special business segment is SOE, with selected Kolbenschmidt and Pierburg components for a varied range of applications. We deliver high-quality parts in small batches for converted engines, e.g. for generators, or components for retrofitters, tuners and manufacturers of construction machinery and agricultural devices. Our customers also include manufacturers in non-automotive sectors, from the pharmaceutical and chemical industry, the electrical and electronics industry, and parts suppliers in the field of renewable energy.

Technical expertise

To achieve optimum results, we support our customers in all phases of their project:

- Finding and selecting products
- Initial drafting
- Test phase
- Support right up to SOP
- Follow-up support and supply during and after production

At the same time, we keep the specific technical and economic factors in mind, and always have our eye on the long-term use of the final application.

FOR PERFECT PRODUCTS AND PERFECT SERVICE WE SUPPLY HIGH-QUALITY COMPONENTS FOR TECHNICALLY SOPHISTICATED SYSTEMS



Electric water pumps

Quiet-running electronic water pumps from Pierburg are used for many different cooling tasks. These include e.g. use in water-controlled heaters, auxiliary heaters or independent car heaters. Electric water pumps for SOE applications are available in various versions and outputs.



Secondary air system

Pierburg has been producing components for secondary air systems since the beginning of the 1990s. Secondary air combustion helps to reduce harmful emissions in the exhaust gas even during the cold start phase. We supply all secondary air system components.



Fuel supply

As a leading supplier, Motorservice offers an extensive range of fuel pumps, pump modules, check valves, regeneration valves and cut-off valves. The SOE fuel supply product range covers a diverse array of industrial and automotive applications.



Air supply

Components such as throttle bodies, regulating throttles, intake modules and mass air flow sensors are provided, ensuring a supply of fresh air, optimum performance, travelling comfort and low fuel consumption.



Electric valves

Pierburg electric valves are employed for switching and controlling pneumatic actuators. Among other things, they regulate the air supply in intake manifolds and secondary air systems, and direct the exhaust gas through exhaust gas flaps.



Exhaust-gas recirculation valves

Pierburg has been producing EGR valves in high volumes for over 30 years. These are used in both petrol and diesel engines. The product range covers valves with pneumatic, solenoid and motorised control.

**Exhaust gas flaps**

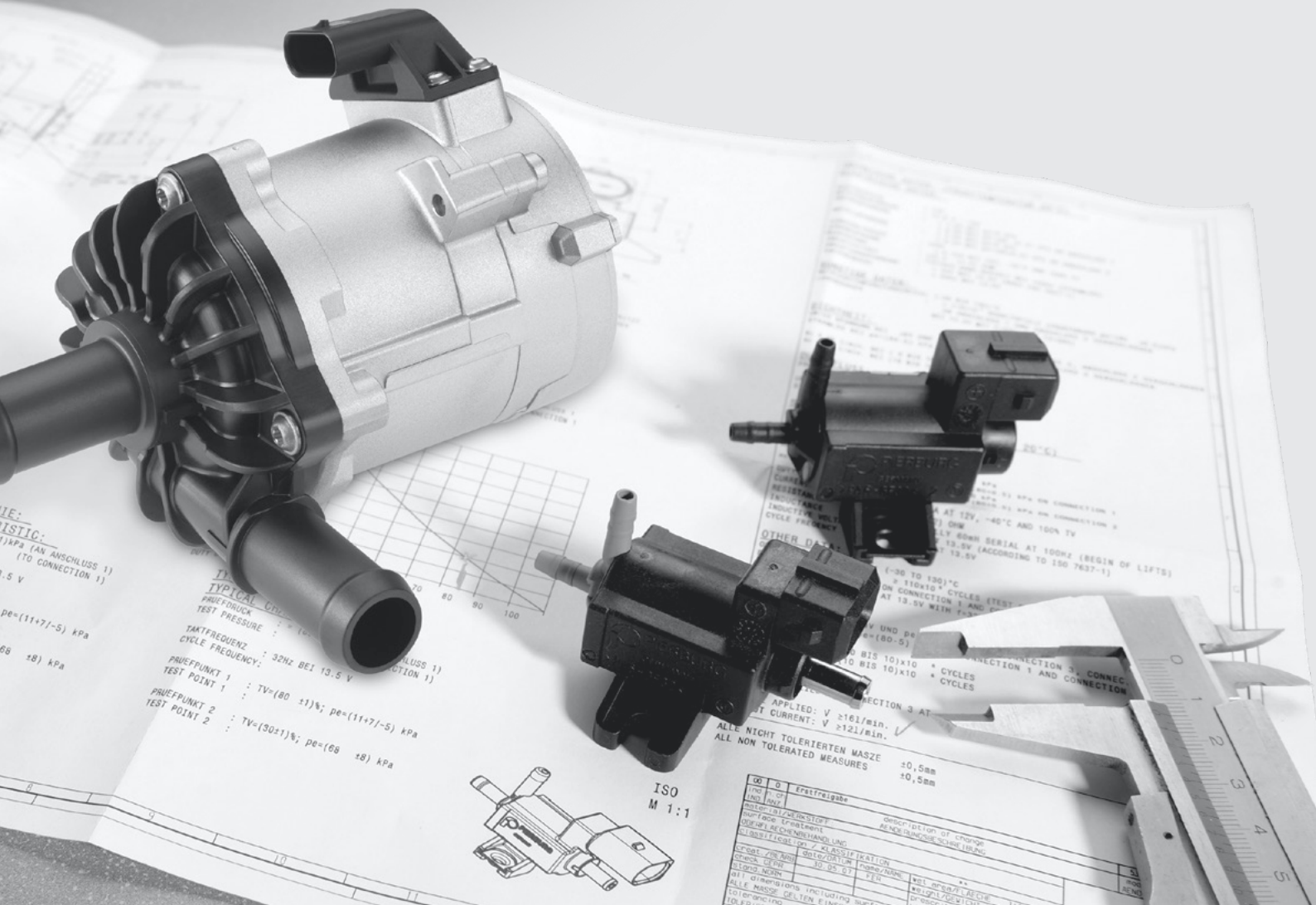
Exhaust gas flaps are used to optimise the exhaust tract acoustics, for example, to enhance performance through resonance effects, to reduce noise and also as switching elements for emission control methods. Our SOE exhaust gas flaps are available in different versions.

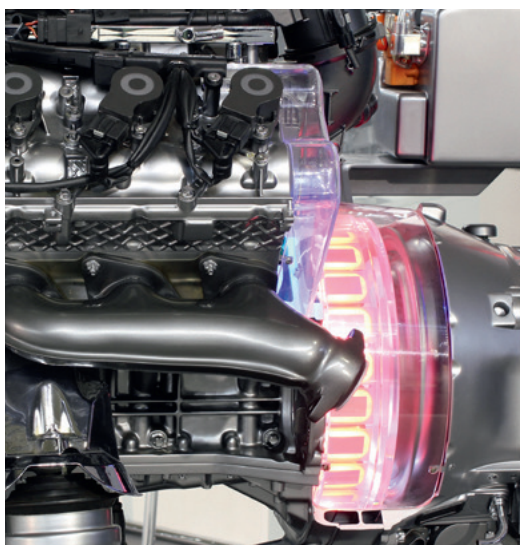


PERFECT PRODUCTS AND PERFECT SERVICE FOR UNUSUAL APPLICATIONS

THESE SERVICE BENEFITS INCLUDE:

- Detailed technical information
- Rapid availability
- Intensive consulting
- Cost-efficient products without lowering quality standards
- Product support even during the development phase
- Punctual and reliable delivery



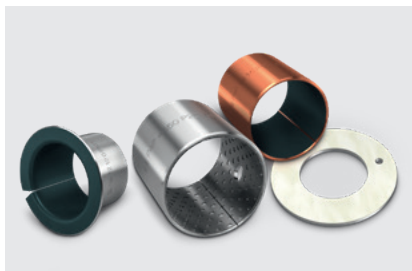


PERFECT PRODUCTS AND PERFECT SERVICE ARE THE MARK OF ALL PRODUCT SERIES OF THE MOTORSERVICE GROUP



IMA – Industry | Marine | Agriculture

Agricultural machinery, construction machinery, material-handling vehicles, industrial plants and machinery for mining and raw material extraction are powered by engines that are mostly exposed to extreme loads. Due to the exacting requirements regarding service life, regular maintenance and the prompt replacement of wearing parts are a must. As a renowned spare parts supplier, Motorservice offers spare parts in OE quality for many engines in these fields.



KS PERMAGLIDE®

KS PERMAGLIDE® is a registered trademark of KS Gleitlager GmbH and stands for robust, hard-wearing plain bearing materials. A composite, multi-layered system combines the excellent sliding properties of plastic with the high load carrying capacity and thermal conductivity of metal. PERMAGLIDE® sliding elements are available in standard design to DIN ISO 3547, or as customised parts based on drawings.



KS Kolbenschmidt

Under the KS brand, the KS Kolbenschmidt division produces pistons for petrol and diesel engines for cars and utility vehicles, and is one of the world's leading manufacturers in this segment. In addition, it develops and produces pistons for 2-stroke and compressor engines, and large pistons for stationary engines, marine diesel engines and locomotives.

HEADQUARTERS:

MS Motorservice International GmbH

Wilhelm-Maybach-Straße 14–18
74196 Neuenstadt, Germany
www.ms-motorservice.com

www.ms-motorservice.com

© MS Motorservice International GmbH – BR 1181-02 – EN – 09/15 (032019)