



KS PERMAGLIDE® plain bearings

Bearing in label printers

Sector: Printing industry, packaging industry

**PRODUCT
APPLICATION**

Product used:

KS PERMAGLIDE® plain bearing bush
design PAP ... P10

Function

Label printers are used for labelling packaging, e.g. with barcodes, item numbers or other data. Label printers are often integrated in packaging machines.

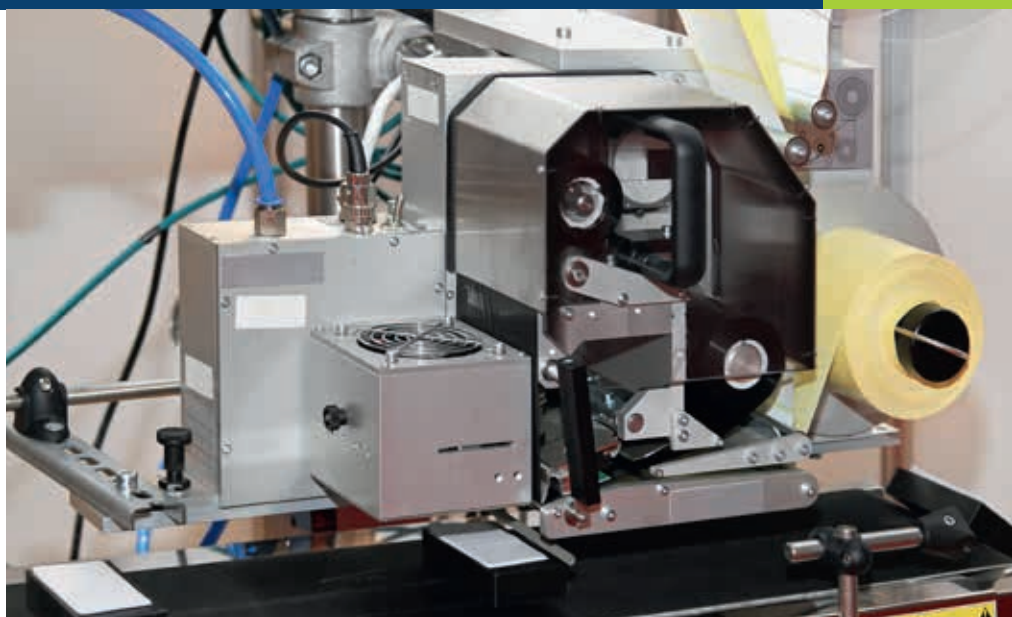
A stamp prints the ink from an ink ribbon onto the packaging. The stamp moves in an oscillating motion and is driven via a cam and a spring.

Bearing of the shafts and stamp in label printers with KS PERMAGLIDE® P10 plain bearing bushes

The KS PERMAGLIDE® P10 plain bearing bushes are used in label printers for holding the swivelling shafts and the oscillating stamp. The plain bearings are suitable for swivelling and for oscillating movements.

Advantage: Reliable function of the bearing with KS PERMAGLIDE® P10 plain bearings

- Maintenance-free, low wear
- Dry running, so no soiling from lubricant
- Insensitive to dirt
- Smooth running
- High durability
- Simple design
- Simple mounting by pressing into the housing
- No protection from twisting and shifting required



Label printer

Description of material

KS PERMAGLIDE® P10 is a universal plain bearing material for both dry and lubricated applications. The composite, multi-layered material excels thanks to its high rigidity, durability, high chemical resistance and good emergency running properties. These characteristics are achieved to a great extent through the use of lead bronze sintered onto a steel base, and friction-lowering additives of fluoropolymer PTFE and the metal lead.

Similar applications

Dry printer, dry printing device, transfer printer, thermal transfer printer, label printer, label writer, sticker printer, stamp applicator, labeller, packaging printer

Further information on KS PERMAGLIDE® plain bearings

- KS PERMAGLIDE® catalogue, item no. 50003863-02
- KS PERMAGLIDE® OnlineShop
www.permaglide.com/onlineshop

*KS PERMAGLIDE® plain bearing bush
design PAP ... P10*

