



APPLICATION INFO

KS PERMAGLIDE® PLAIN BEARINGS: CLOSE COUPLING SYSTEM OF SEMITRAILERS

Sector: Utility vehicle production

Products:

KS Permaglide® plain bearing bush **design PAP ... P200**

KS Permaglide® thrust washer **design PAW ... P200**

Function

Close coupling systems are used between the trailer and towing vehicle on semitrailers. The distance between the trailer and towing vehicle is extremely small during forwards travel. The close coupling moves the trailer away from the towing vehicle by 500 mm in curves. The advantage over normal coupling systems is the longer loading area with the same total length.

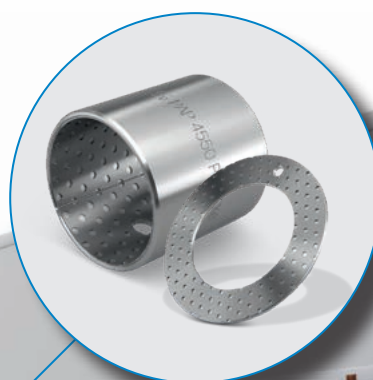
The bridge is twisted in relation to the trailer in curves. The twisting of the bridge is transferred to the ring gear. The ring gear engages in a ring gear ring on the crank disc. The connecting rod is fastened with bearings on the trailer and on the crank disc. This means that the crank mechanism is adjusted in every curve. The trailer is moved backwards on linear guides.

Bearing with KS Permaglide® P200 plain bearing bushes and thrust washers

KS Permaglide® P200 plain bearing bushes can be used for the linear guide in the application. There are two rigid shafts running on the trailer in two KS Permaglide® P200 plain bearing units each. The plain bearing bushes are pressed into the connecting rod. KS Permaglide® P200 thrust washers are used for the axial bearing.

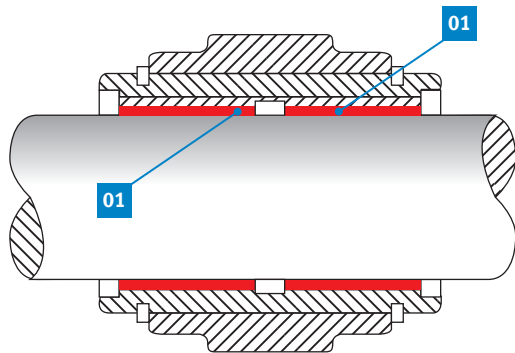
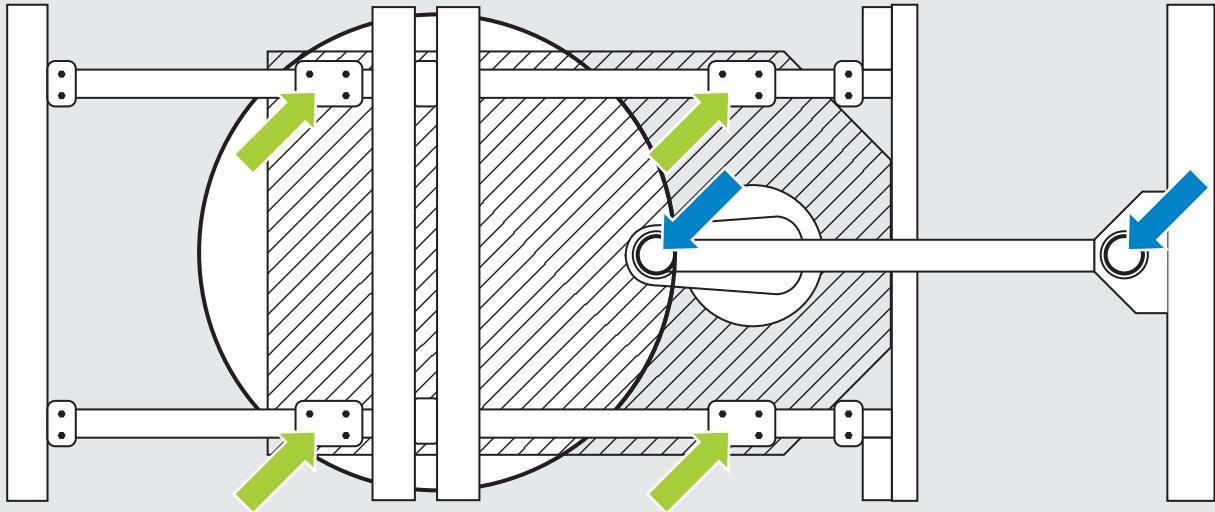
Using the KS Permaglide® P200 plain bearing bushes and thrust washers means that the close coupling also functions reliably under difficult conditions:

- High wear resistance
- Highly stressable
- Insensitive to shocks and impacts
- Insensitive to dirt and moisture
- No tribocorrosion
- Smooth running
- Good damping characteristics
- Low-maintenance operation with lubrication

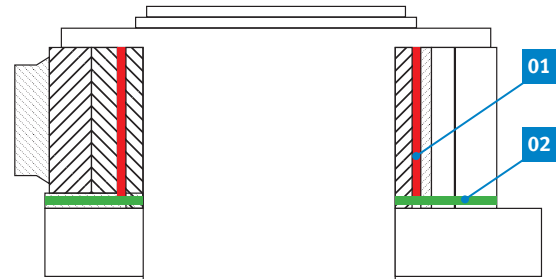




TOP VIEW OF THE PIVOT OF THE COUPLING SYSTEM



01 KS Permaglide® plain bearing bush design
PAP ... P200



01 KS Permaglide® plain bearing bush design
PAP ... P200
02 KS Permaglide® thrust washer design PAW ... P200



Further information on
KS Permaglide® plain bearings
KS Permaglide® catalogue,
item no. 50003863-02