



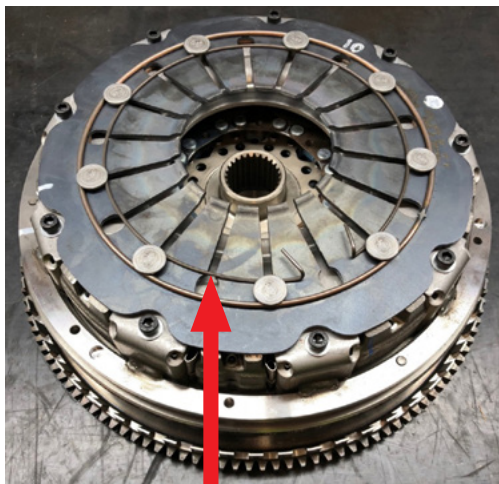
# CLUTCHTECH



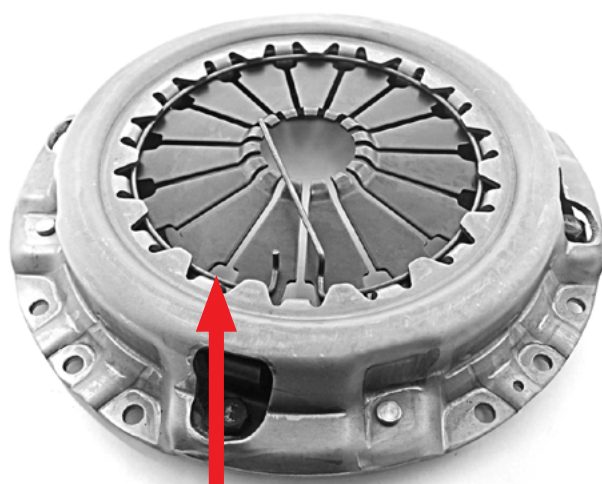
## TSB-263

### Removal of Wire Ring

Note: This clutch has a wire ring holding the diaphragm down to assist with bolting up the clutch.

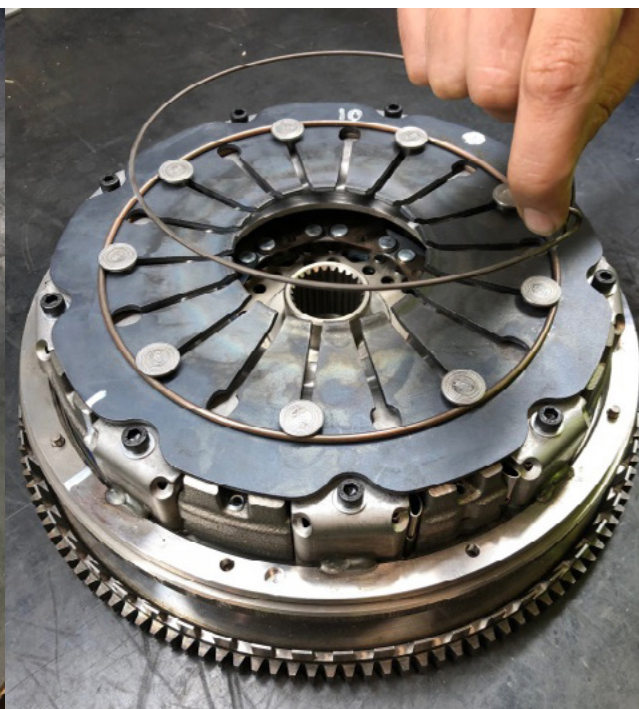


This is the hold down ring. It has 2 'handles' for removal. The other ring is a pivot ring and must remain on the clutch.



On a pressure plate with a pressed metal cover, the hold down ring will be the only visible/ removable ring.

This ring **MUST** be removed after the clutch has been bolted to the flywheel. Simply squeeze the handles together and manoeuvre out.



#### LEADING BRANDS

CLUTCHPRO CLUTCHPRO



[australianclutch.com.au](http://australianclutch.com.au)

1800 CLUTCH (258824)