



# CLUTCHTECH



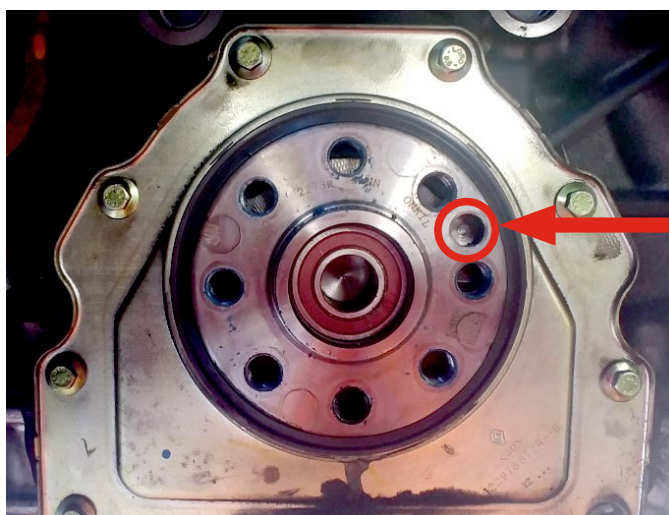
## TSB-266

### Flywheel Crank Indexing

Please note when fitting this clutch and flywheel that the crank and flywheel **must be** correctly indexed to ensure that crank trigger wheel is in the correct orientation for firing order. The locating hole in the crank may not have a dowel installed from factory which could mean that the flywheel may fit in multiple orientations.

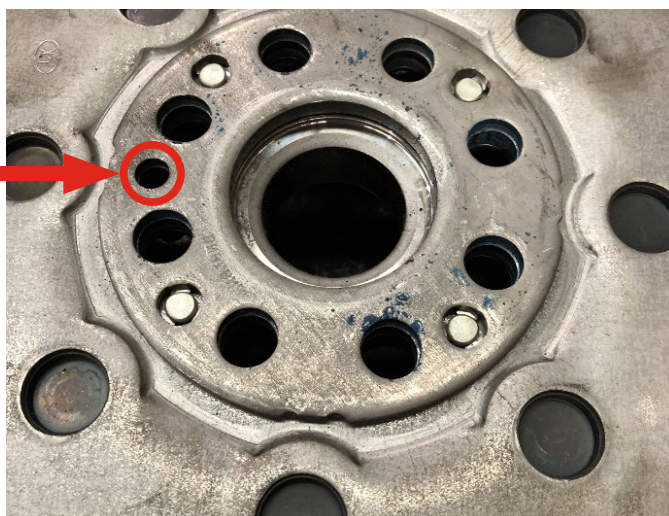
Failure to install the flywheel in the correct orientation to the crank can result in the engine not starting, misfiring, engine codes or damage to the engine.

Take note of the orientation of the flywheel being removed. The alignment hole in the flywheel will need to be indexed in the same orientation and ensure that the alignment hole in the crank meets the alignment hole in the flywheel flange.



CRANK ALIGNMENT HOLE  
(NO DOWEL)

FLYWHEEL  
ALIGNMENT HOLE



#### LEADING BRANDS

CLUTCHPRO CLUTCHPRO  
COMMERCIAL



[australianclutch.com.au](http://australianclutch.com.au)

1800 CLUTCH (258824)