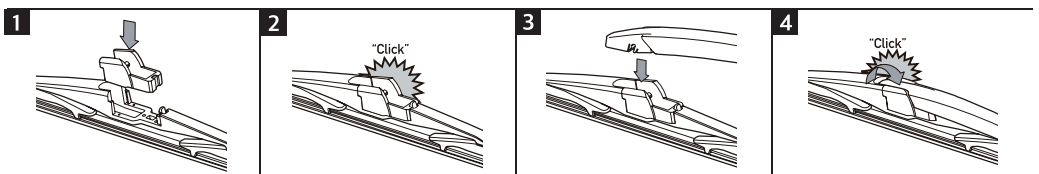
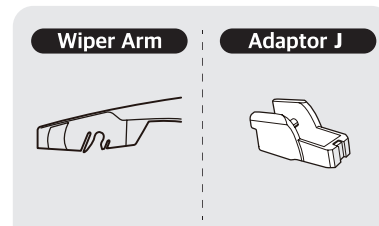
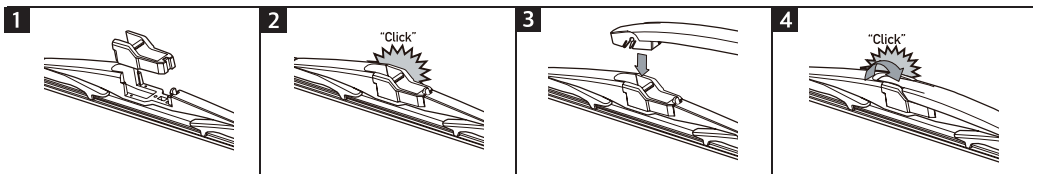
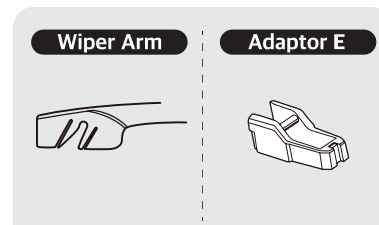
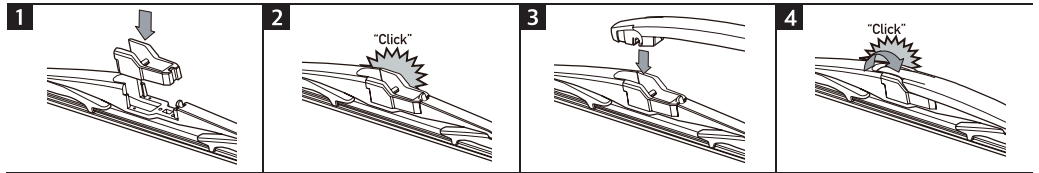
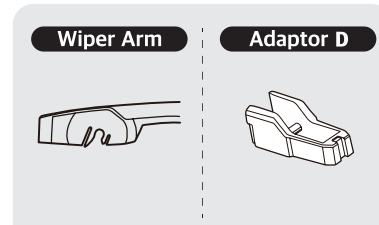
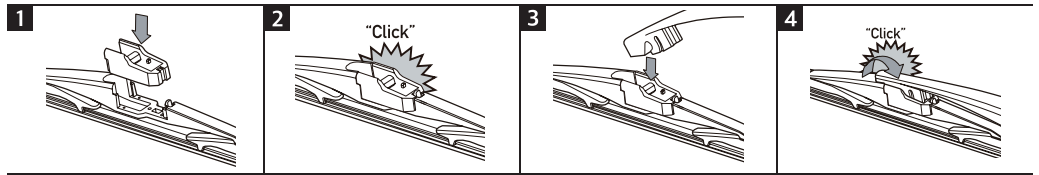
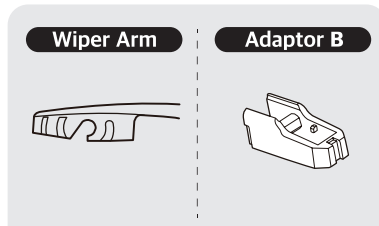
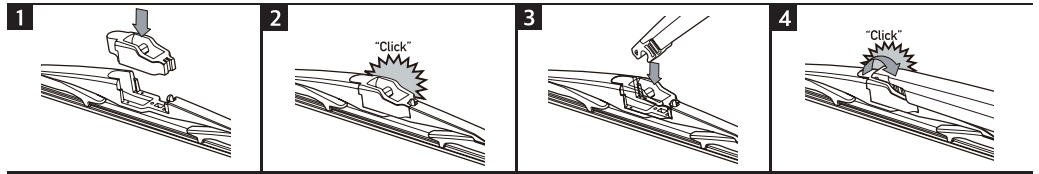
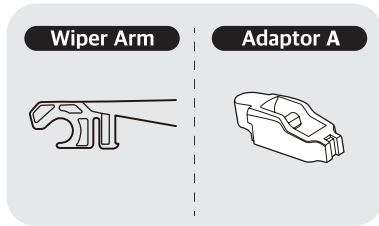


## CAUTION

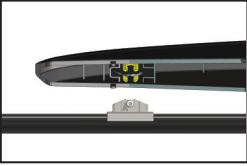



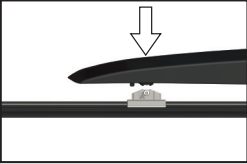
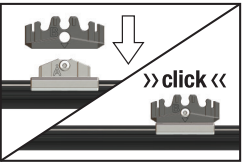
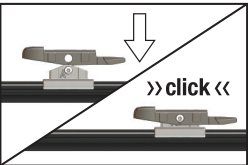
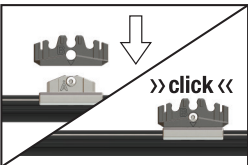
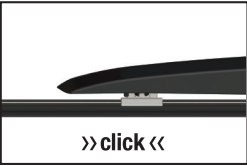
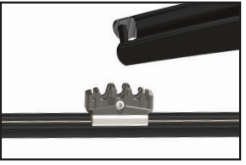
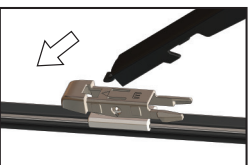
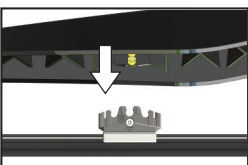
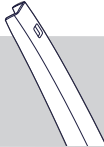
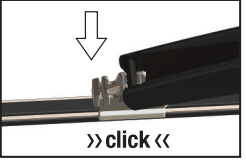
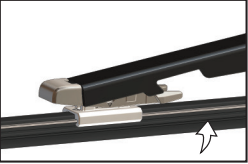


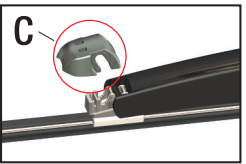

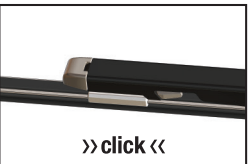

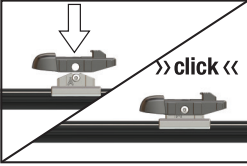
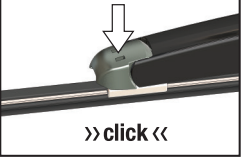
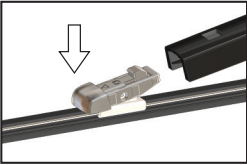

Care should be taken when changing blades to ensure that the wiper arm does not spring back onto the windscreen once the blade is removed. We recommend that you either put card over the windscreen or support the arm to prevent damage to the windscreen if the arm springs back.



## CAUTION

Care should be taken when changing blades to ensure that the wiper arm does not spring back onto the windscreen once the blade is removed. We recommend that you either put card over the windscreen or support the arm to prevent damage to the windscreen if the arm springs back.


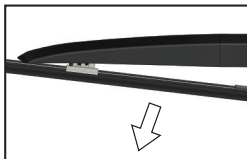

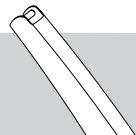
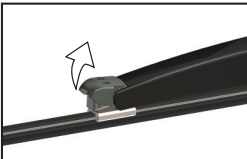
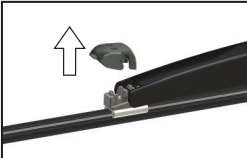
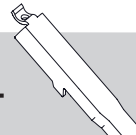
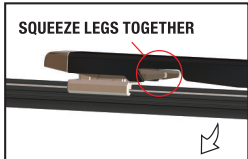
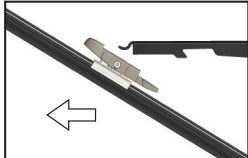
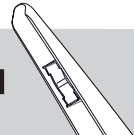
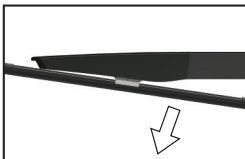
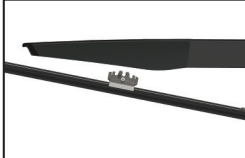
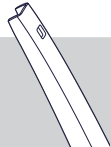
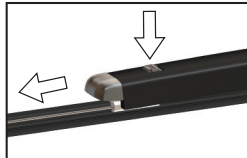

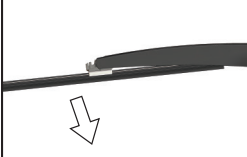


TRUNION	V NOTCH	REAR I&L	CROSS PIN
<b>1</b> 	<b>USE ADAPTER B</b> 	<b>USE ADAPTER E</b> 	<b>USE ADAPTER B</b> 
<b>2</b> 	<b>1</b>  <b>&gt;&gt;click&lt;&lt;</b>	<b>1</b>  <b>&gt;&gt;click&lt;&lt;</b>	<b>1</b>  <b>&gt;&gt;click&lt;&lt;</b>
<b>3</b>  <b>&gt;&gt;click&lt;&lt;</b>	<b>2</b> 	<b>2</b> 	<b>2</b> 
<b>REAR PTB</b> 	<b>3</b>  <b>&gt;&gt;click&lt;&lt;</b>	<b>3</b> 	<b>3</b>  <b>&gt;&gt;click&lt;&lt;</b>
<b>USE ADAPTER D</b> 	<b>4</b>  <b>C</b>  <b>LOCATE ADAPTER COVER PIECE "C"</b>	<b>4</b>  <b>&gt;&gt;click&lt;&lt;</b>	<b>4</b>  <b>&gt;&gt;click&lt;&lt;</b>
<b>1</b>  <b>&gt;&gt;click&lt;&lt;</b>	<b>5</b>  <b>&gt;&gt;click&lt;&lt;</b>		
<b>2</b> 			
<b>3</b>  <b>ALIGN ARM WITH ADAPTER</b> <b>&gt;&gt;click&lt;&lt;</b>			

## CAUTION

Care should be taken when changing blades to ensure that the wiper arm does not spring back onto the windscreen once the blade is removed. We recommend that you either put card over the windscreen or support the arm to prevent damage to the windscreen if the arm springs back.



<p><b>TRUNION</b></p>  <p><b>1</b></p>  <p><b>HOLD WIPER ARM, PULL OUT BLADE FIRMLY</b></p> <p><b>2</b></p> 	<p><b>V NOTCH</b></p>  <p><b>1</b></p>  <p><b>PULL OUT ADAPTER COVER</b></p> <p><b>2</b></p> 	<p><b>REAR I&amp;L</b></p>  <p><b>1</b></p> <p><b>SQUEEZE LEGS TOGETHER</b></p>  <p><b>SQUEEZE LEGS, ROTATE THE BLADE OUT</b></p> <p><b>2</b></p> 	<p><b>CROSS PIN</b></p>  <p><b>1</b></p>  <p><b>HOLD WIPER ARM, PULL OUT BLADE FIRMLY</b></p> <p><b>2</b></p> 
<p><b>REAR PTB</b></p>  <p><b>1</b></p>  <p><b>PRESS DOWN TAB FIRMLY, PULL THE BLADE AWAY FROM ARM</b></p> <p><b>2</b></p> 	<p><b>3</b></p>  <p><b>HOLD WIPER ARM, PULL OUT BLADE FIRMLY</b></p> <p><b>4</b></p> 