

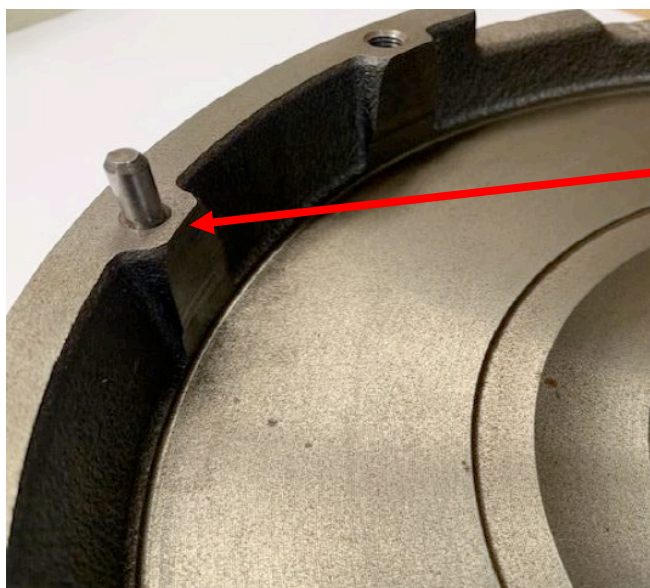


CLUTCH TECHNICAL GUIDE

TBC81

Firm fitment of the clutch disc when placing into the flywheel.

The OE flywheel narrows at opening of this recessed flywheel. When installing the clutch disc into the flywheel, the disc needs to be firmly pressed to clear the shoulder. Manual pressure is adequate; no tools are needed to assist with this.



Pressure needs to be applied to the disc to clear this section of the flywheel.

Make sure plate is square and not on an angle when installing.