

# TECHNICAL

# BULLETIN

**TECH  
MATE**

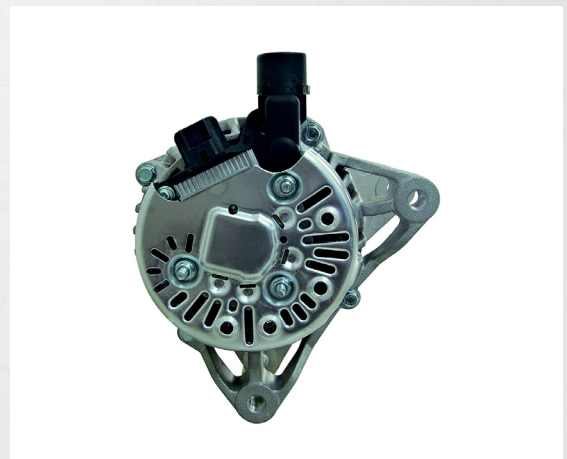
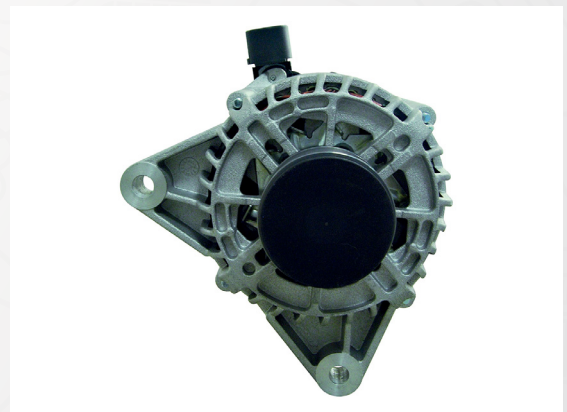
Bulletin Ref: TB19a

## Ford Alternator Broken Wire

**AAL1424**

Possible issues relating to charging problems:

1. One Amp fuse is sometimes defective, this can be found in the main fuse box in the engine bay.
2. The wiring harness from factory is too tight resulting in broken wires in the harness, the wires are mostly broken under headlight.
3. Corrosion inside the multi connector on the rear of the unit is also common.

**TECH  
MATE**

For further information on this or any other issue contact the  
Apec technical team by phone or email at:  
Phone: 01174 288090 Email: [technical@apecautomotive.co.uk](mailto:technical@apecautomotive.co.uk)



**FOLLOW US**  
#TechMate | @TechMateAuto