

TECHNICAL

BULLETIN

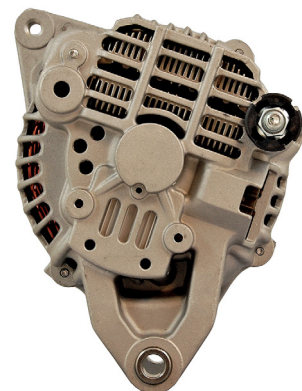
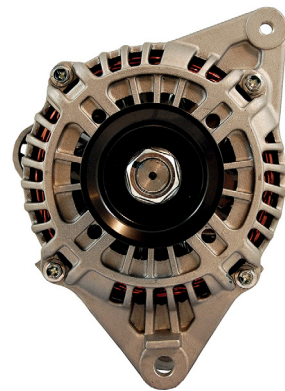
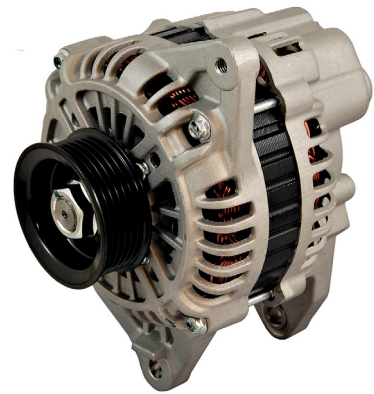
**TECH
MATE**

Bulletin Ref: TB4a

AAL1747

Poor or corroded connections on the rear of the alternator are common creating charging issues, this can also cause the charging light to illuminate when the unit is still charging.

Please double check before ordering and fitting.

**TECH
MATE**

For further information on this or any other issue contact the
Apec technical team by phone or email at:
Phone: 01174 288090 Email: technical@apecautomotive.co.uk



FOLLOW US
#TechMate | @TechMateAuto