

TECHNICAL

BULLETIN

**TECH
MATE**

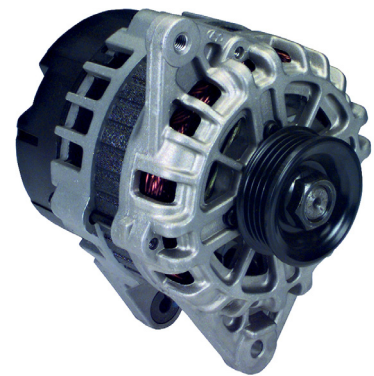
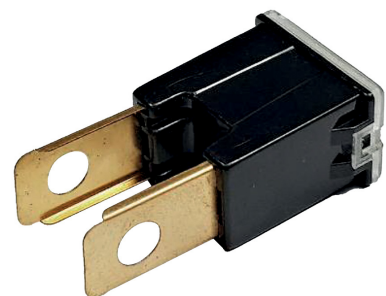
Bulletin Ref: TB11a

80amp Korean Fuse

AAL1845

Before fitting check the 80a PAL type fuse as this fuse can blow causing no charge. (Fig1.)

Also check for corrosion around and underneath the fuse connections which is common.

**Fig 1.****TECH
MATE**

For further information on this or any other issue contact the
Apec technical team by phone or email at:
Phone: 01174 288090 Email: technical@apecautomotive.co.uk



FOLLOW US
#TechMate | @TechMateAuto