

TECHNICAL

BULLETIN

**TECH
MATE**

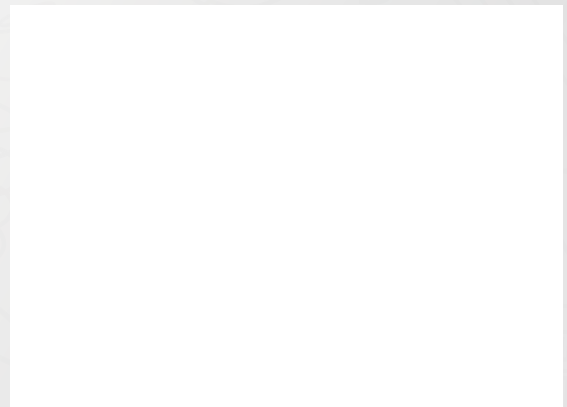
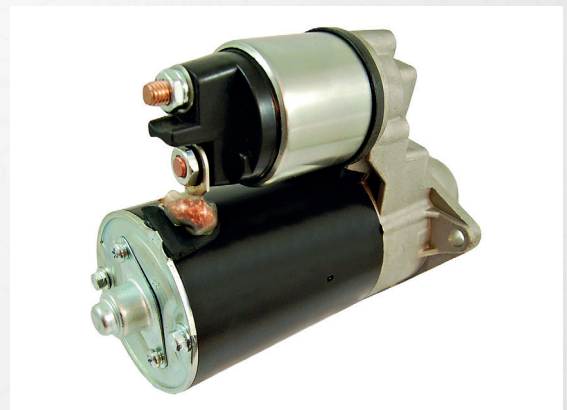
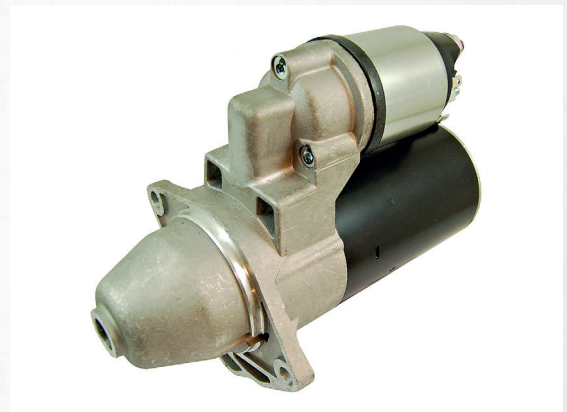
Bulletin Ref: TB26a

Start Stop Warning

ASM1701

This unit should only be fitted to a vehicle without start stop function.

Fitting this to a vehicle with start stop function will invalidate the warranty and may result in damage to the vehicle.

**TECH
MATE**

For further information on this or any other issue contact the
Apec technical team by phone or email at:
Phone: 01174 288090 Email: technical@apecautomotive.co.uk



FOLLOW US
#TechMate | @TechMateAuto