



# INSTALLATION MANUAL

ASE-4286

Arnott New Front Left Electronic eRide Air Strut  
Porsche Panamera (971) Excl. GTS



**Engineered to Ride, Built to Last<sup>®</sup>**

# CONGRATULATIONS ON YOUR PURCHASE OF AN ARNOTT® SUSPENSION PRODUCT

WE AT ARNOTT LLC ARE PROUD TO OFFER A HIGH QUALITY PRODUCT WITH ALL THE TECHNICAL SUPPORT YOU NEED. THANK YOU FOR YOUR CONFIDENCE IN US AND OUR PRODUCT.

Proper installation is essential to experience and appreciate the benefits of this system. Please take a moment to review these installation instructions before you begin to install these components on your vehicle. The removal and installation of air suspension products should only be performed by a fully qualified and certified automotive professional.

It is equally important to be aware of all necessary safety measures while installing your new Air Suspension System. This includes proper lifting and immobilizing of the vehicle and isolation of any stored energy to prevent personal injury or property damage.

## GENERAL INFORMATION

Reading this manual signifies your agreement to the terms of the general release, waiver of liability, and hold harmless agreement, the full text of which is available at [www.arnottinc.com](http://www.arnottinc.com) and [www.arnotteurope.com](http://www.arnotteurope.com).



### WARNING:

The air suspension system is under pressure (up to 10 bar, or 150 lbf/in). Verify pressure has been relieved and disconnect power to the air suspension system prior to disassembly. Do not allow dirt or grease to enter the system. Always wear standard hand, ear, and eye protection when servicing the air suspension system.

- Not to be stored below 5°F (-15°C) and above 122°F (50°C).
- Avoid damage to air lines and cables.
- Removal and installation is only to be performed by fully qualified personnel.
- Use car manufacturer's diagnostic software.

### CAUTION:

Damage to the vehicle and air suspension system can be incurred if work is carried out in a manner other than specified in the instructions or in a different sequence.

To avoid the possibility of short circuits while working with electric components consult your owner's manual on how to disconnect your battery.

Consult your vehicle owner's manual, service manual, or car dealer for the correct jacking points on your vehicle and for additional care, safety and maintenance instructions. Under no circumstances should any work be completed underneath the vehicle if it is not adequately supported, as serious injuries and death can occur.

For vehicles with a "Closed Air Supply System," replacement of components requires proper adherence to procedures set forth within OE servicing literature. Failure to comply with the OE prescribed procedures can result in component damage and/or failure.

# AIR STRUT REMOVAL

1. Raise the vehicle.
2. Remove the front left wheel. Raise an appropriate jack under the front axle. (Figure 1)



FIGURE 1

3. Disconnect the electrical connector from the air strut. (Figure 2)

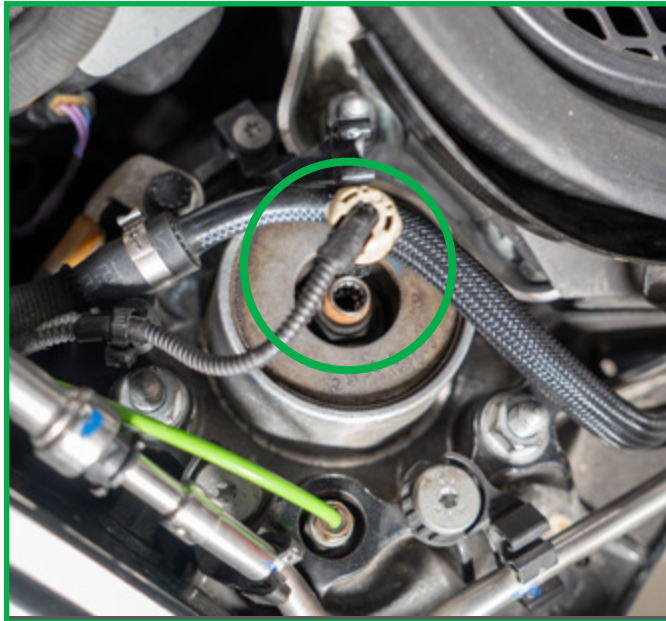


FIGURE 2

4. Disconnect the air fitting from the air strut. (Figure 3)



FIGURE 3

5. Remove the electrical wiring out of the way as shown. (Figures 4, 5)



FIGURE 4



FIGURE 5

6. Disconnect the two (2) electrical connectors from the air strut. (Figure 6)



FIGURE 6

7. Remove the two (2) bolts that hold the brake line. (Figures 7, 8)



**WARNING:**

Do not bend the metal brake line.



FIGURE 7

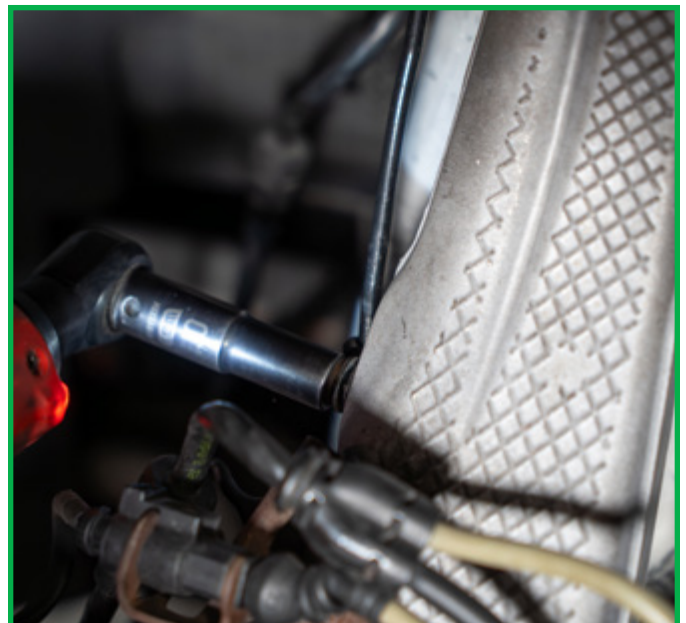


FIGURE 8

8. Remove the upper sway bar nut and the upper control arm nut. (Figures 9, 10)



FIGURE 9



FIGURE 10

9. Remove the lower air strut bolt. (Figures 11, 12)

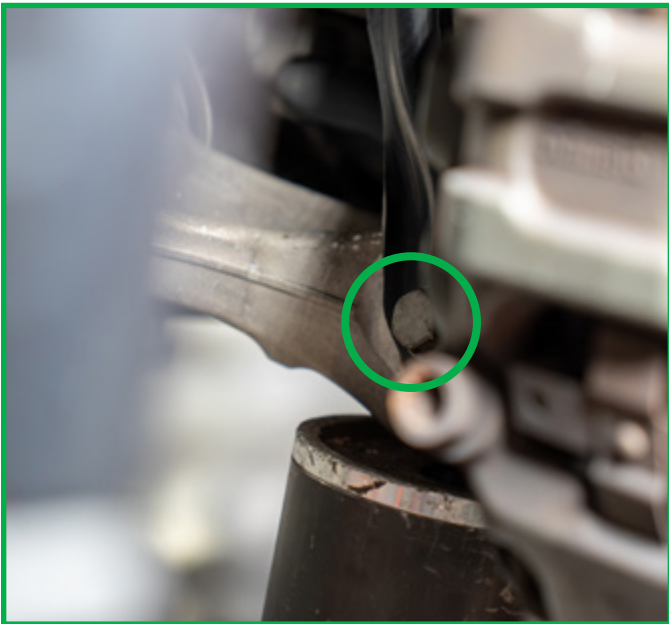


FIGURE 11



FIGURE 12

10. Raise the jack to disengage the sway bar end link. Move the sway bar out of the way. Slowly release the jack to separate the upper control arm from the spindle. (Figure 13, 14)



FIGURE 13



FIGURE 14

11. Remove the three (3) upper air strut bolts. (Figures 15)

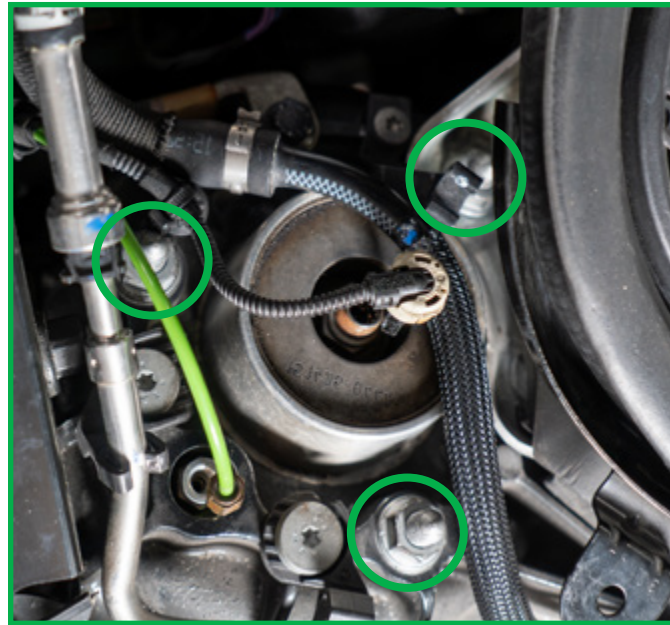


FIGURE 15

12. Pry down the front axle and slide the bottom of the air strut out toward the front of the vehicle. (Figure 16)



FIGURE 16

13. Removal complete. (Figure 17)



FIGURE 17

# eRIDE AIR STRUT INSTALLATION



## WARNING:

Tighten all nuts and bolts to the manufacturer's specifications during the installation process.

1. Pry down the front axle. From the front side of the vehicle, raise the strut into position. (Figures 18, 19)



FIGURE 18



FIGURE 19

2. Install the three (3) upper air strut bolts. (Figure 20)

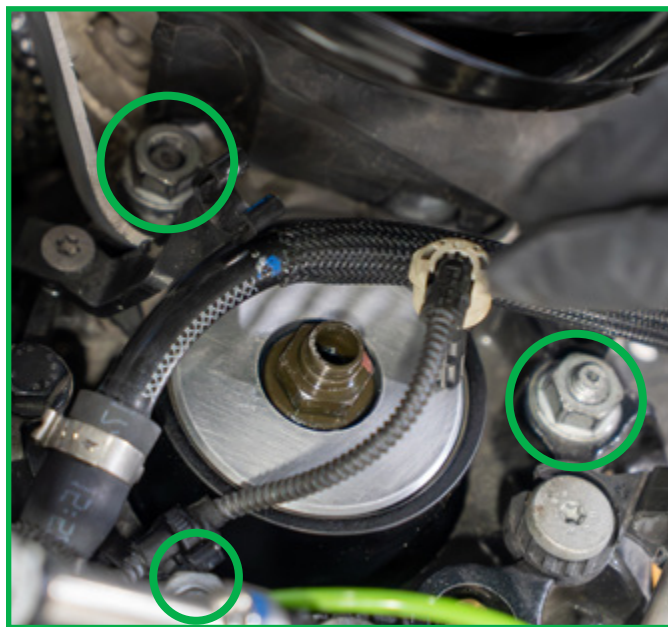


FIGURE 20

3. Install the lower air strut bolt. (Figures 21, 22)



FIGURE 21

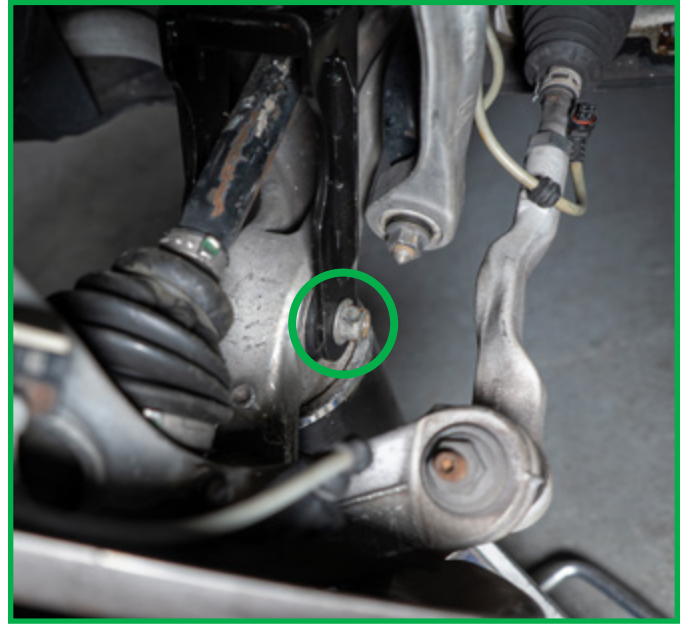


FIGURE 22

4. Move the sway bar back into place. Install the upper sway bar nut and the upper control arm nut. (Figures 23, 24)



FIGURE 23

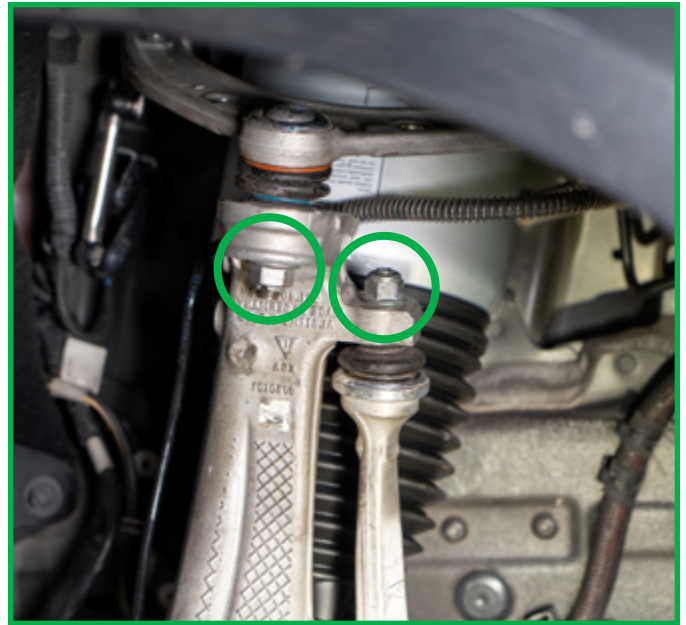


FIGURE 24

5. Install the two (2) bolts that hold the brake line. (Figures 25, 26)



**WARNING:**

Do not bend the metal brake line.

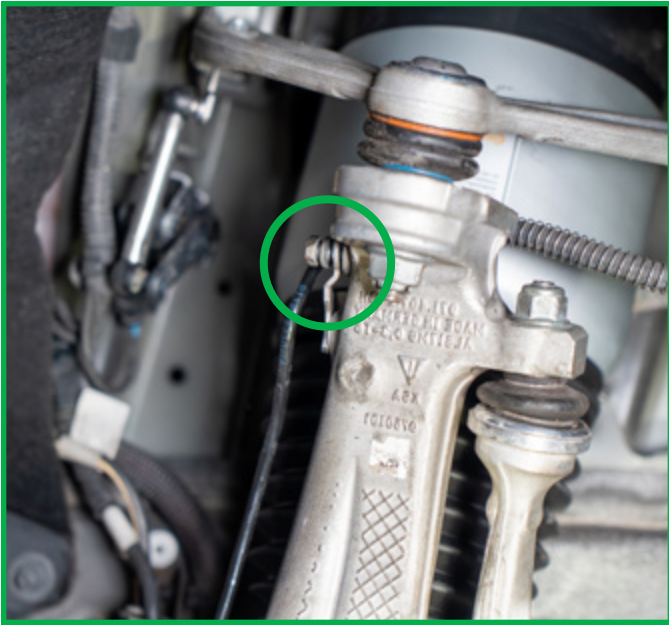


FIGURE 25



FIGURE 26

6. Connect the two (2) electrical connectors to the air strut. (Figure 37)



FIGURE 27

7. Return the electrical wiring back in place as shown. (Figures 38, 39)



FIGURE 28



FIGURE 29

8. Connect the air fitting to the air strut. (Figure 30)

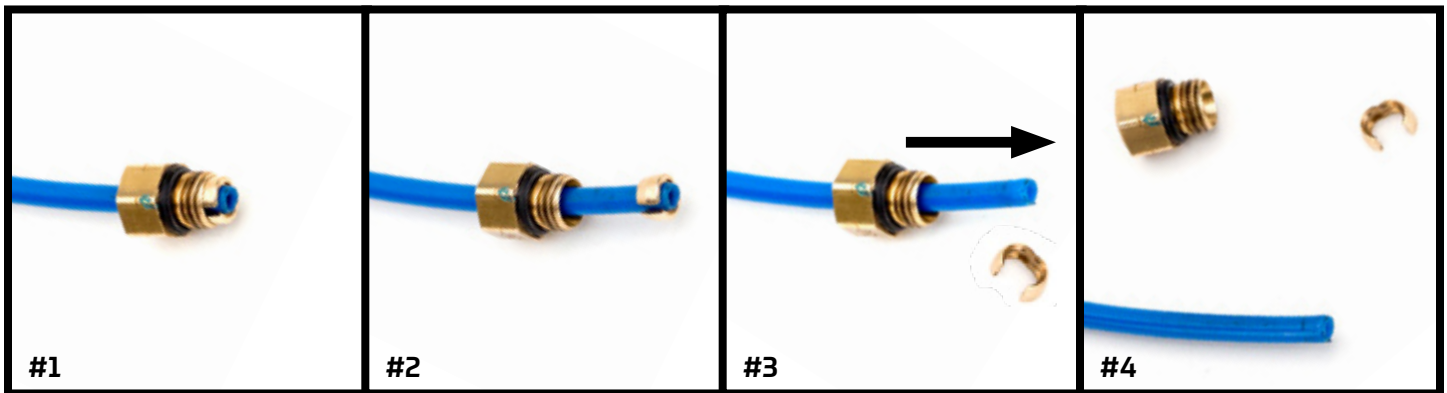
## REMOVAL



Prior to inserting the existing air line into the new air strut you will need to remove the old original equipment air line fitting and discard.

## NOTE:

Scratches and/or deep cuts in the air line can result in possible leaks. Inspect the air line before insertion. Air line needs to be replaced if damaged.



#1

OE AIR LINE FITTING

#2

SLIDE THE THREADED PORTION UP THE LINE AND SPREAD THE COLLET OPEN TO REMOVE

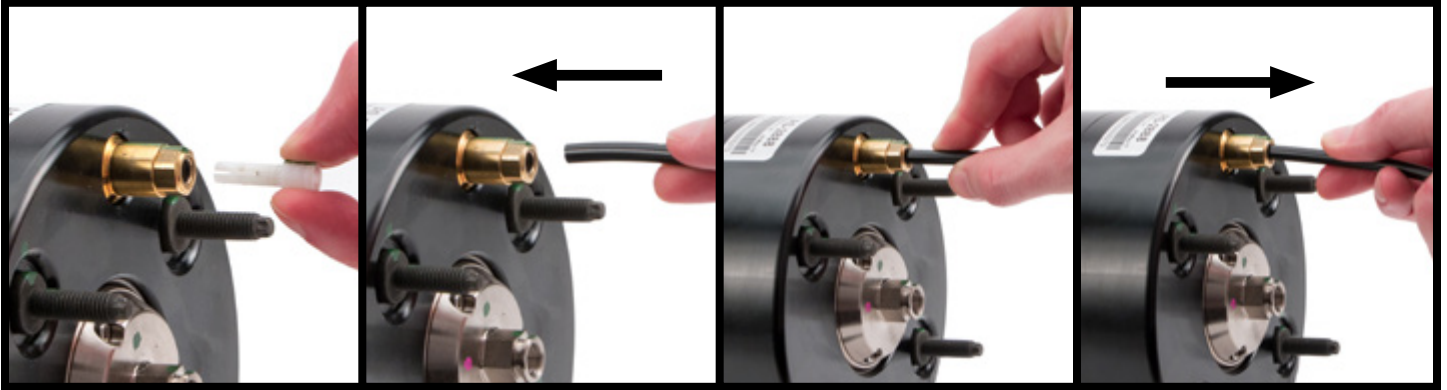
#3

SLIDE THE AIR FITTING OFF OF THE AIR LINE

#4

DISCARD OE AIR LINE FITTING

## INSTALLATION



REMOVE AND DISPOSE OF  
THE SHIPPING PIN.

INSERT AIR LINE INTO  
THE AIR LINE FITTING  
UNTIL IT STOPS.

AIR LINE INSERTED.

GENTLY PULL ON AIR  
LINE TO CONFIRM IT IS  
FULLY SECURED BY THE  
AIR LINE FITTING.

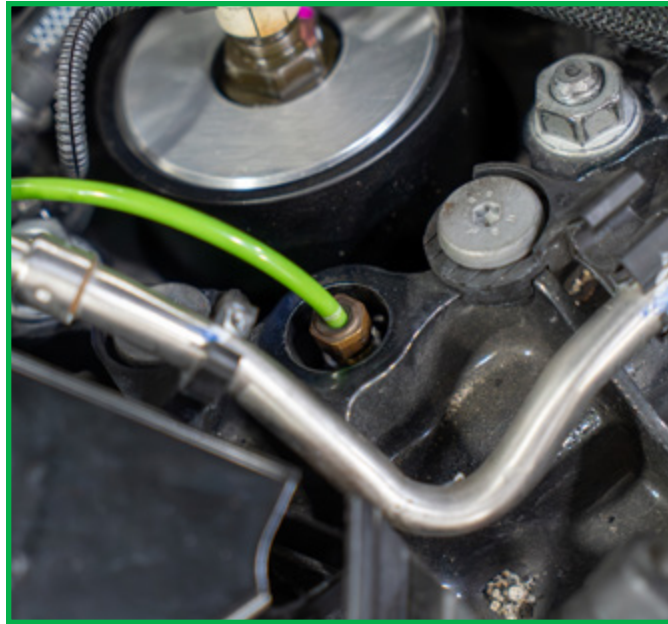


FIGURE 30

9. Connect the electrical connector to the air strut. (Figures 31, 32)



FIGURE 31



FIGURE 32

10. Install the front left wheel.

11. Lower the vehicle.

12. Installation complete.

# Arnott<sup>®</sup>

## Suspension Products

### Arnott US Business Office:

[www.arnottinc.com](http://www.arnottinc.com)

100 Sea Ray Drive  
Merritt Island, FL 32953

**Call:** 800.251.8993

321.868.3016

**Fax:** 321.868.3703

**Email:** [techassistance@arnottinc.com](mailto:techassistance@arnottinc.com)

### Arnott Europe Business Office:

[www.arnotteurope.com](http://www.arnotteurope.com)

Industrieweg 19  
5145 PD, Waalwijk (NL)

**NL Phone:** +31 73 7850 580

**DE Phone:** +31 85 2087 438

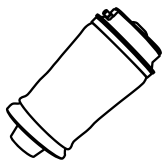
**UK Phone:** +44 203 3186 124

**BE Phone:** +32 258 846 90

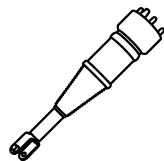
**ES Phone:** +34 91 901 10 56

**FR Phone:** +32 78 48 46 93

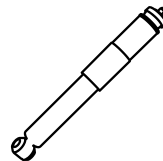
**Email:** [info@arnotteurope.com](mailto:info@arnotteurope.com)



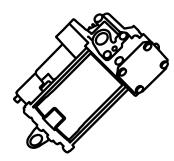
Air Springs



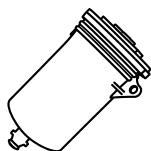
Struts



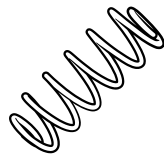
Shocks



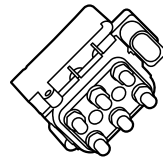
Compressors



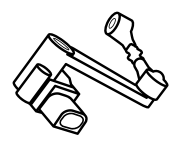
Dryers



Coil Spring  
Conversion Kits



Valve Blocks



Ride Height  
Sensors