



# INSTALLATION MANUAL

MR-3626

Arnott New Rear Magnetic Shock  
Various GM SUVs (GMTK2xx, w/MagneRide)



**Engineered to Ride, Built to Last®**

# CONGRATULATIONS ON YOUR PURCHASE OF AN ARNOTT® SUSPENSION PRODUCT

WE AT ARNOTT LLC ARE PROUD TO OFFER A HIGH QUALITY PRODUCT WITH ALL THE TECHNICAL SUPPORT YOU NEED. THANK YOU FOR YOUR CONFIDENCE IN US AND OUR PRODUCT.

Proper installation is essential to experience and appreciate the benefits of this system. Please take a moment to review these installation instructions before you begin to install these components on your vehicle. The removal and installation of air suspension products should only be performed by a fully qualified and certified automotive professional.

It is equally important to be aware of all necessary safety measures while installing your new Air Suspension System. This includes proper lifting and immobilizing of the vehicle and isolation of any stored energy to prevent personal injury or property damage.

## GENERAL INFORMATION

Reading this manual signifies your agreement to the terms of the general release, waiver of liability, and hold harmless agreement, the full text of which is available at [www.Arnottinc.com](http://www.Arnottinc.com) and [www.Arnotteurope.com](http://www.Arnotteurope.com).



### WARNING:

The air suspension system is under pressure (up to 10 bar, or 150 lbf/in). Verify pressure has been relieved and disconnect power to the air suspension system prior to disassembly. Do not allow dirt or grease to enter the system. Always wear standard hand, ear, and eye protection when servicing the air suspension system.

- Not to be stored below 5°F (-15°C) and above 122°F (50°C).
- Avoid damage to air lines and cables.
- Removal and installation is only to be performed by fully qualified personnel.
- Use car manufacturer's diagnostic software.

### CAUTION:

Damage to the vehicle and air suspension system can be incurred if work is carried out in a manner other than specified in the instructions or in a different sequence.

To avoid the possibility of short circuits while working with electric components consult your owner's manual on how to disconnect your battery.

Consult your vehicle owner's manual, service manual, or car dealer for the correct jacking points on your vehicle and for additional care, safety and maintenance instructions. Under no circumstances should any work be completed underneath the vehicle if it is not adequately supported, as serious injuries and death can occur.

For vehicles with a "Closed Air Supply System," replacement of components requires proper adherence to procedures set forth within OE servicing literature. Failure to comply with the OE prescribed procedures can result in component damage and/or failure.

## NOTE:

The product shown in the installation steps below may look different than the part you are installing. The installation steps are the same (unless otherwise noted) and all notices and warnings should be adhered to in the same manner.

## SHOCK REMOVAL

1. Set steering to straight ahead.
2. Lift vehicle and remove rear wheel and wheel well liner. (Figure 1)



FIGURE 1

3. Locate and remove the air line to deflate the shock. Turn the metal clip approx. 90° To remove the air line fitting from the air strut. (Figure 2)



FIGURE 2

4. Locate and remove the electrical connection from the top of the shock. Detach the strut connection from the clip on the vehicle. (Figure 3)

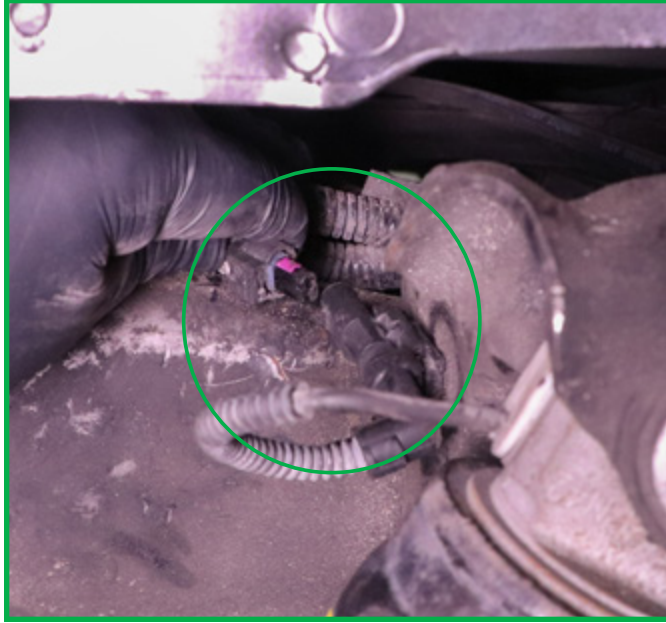


FIGURE 3

5. Loosen and remove the upper and lower shock mounting nuts. (Figure 4)



FIGURE 4

6. Support the axle to relieve pressure from the air strut's mounting points. Remove the upper and lower air strut mounting bolts. (Figures 5, 6)

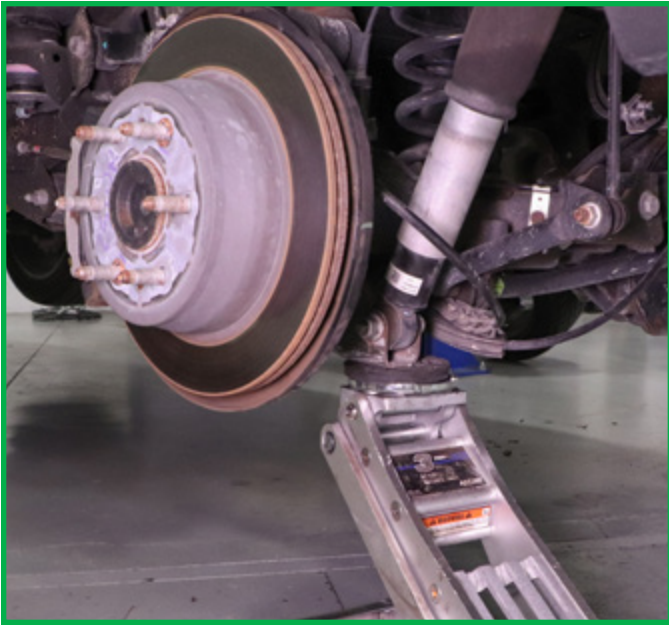


FIGURE 5



FIGURE 6

7. Remove the shock from the vehicle. (Figure 7)

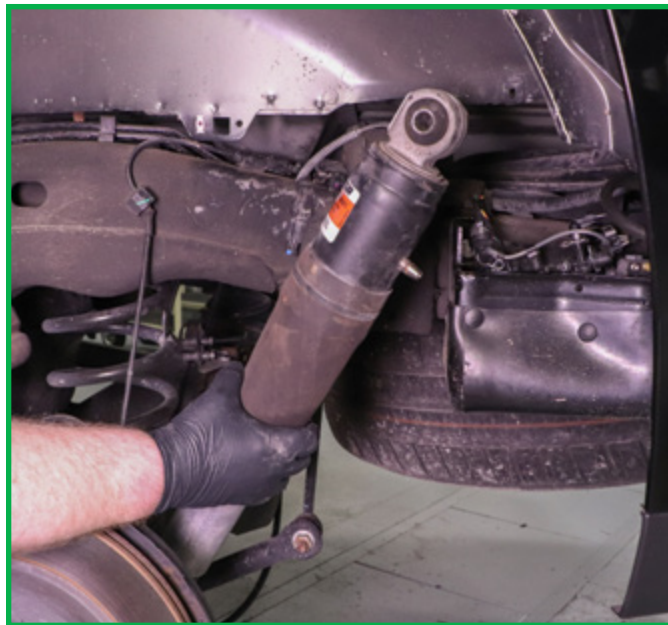


FIGURE 7

# SHOCK INSTALLATION



## WARNING:

Tighten all nuts and bolts to manufacturer's specifications during the installation process.

1. Remove the shipping cap and install the new Arnott magnetic shock. (Figures 8, 9)



FIGURE 8

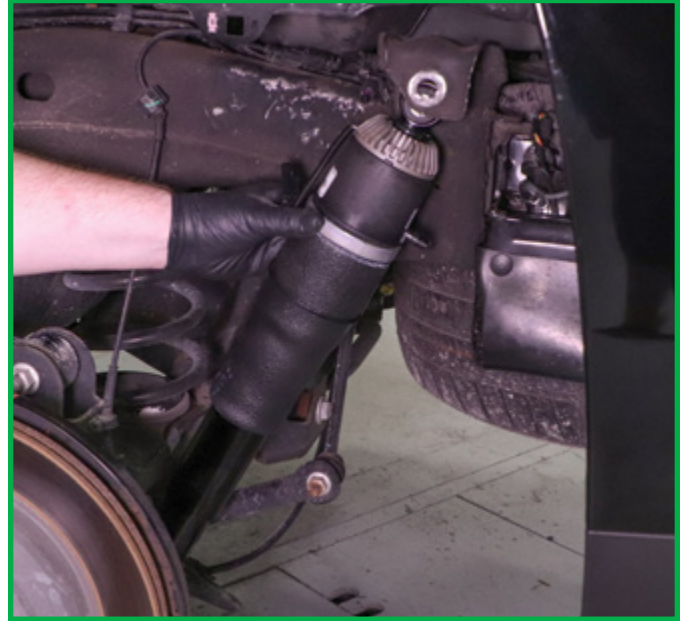


FIGURE 9

2. Install the lower shock mounting bolts and nuts and tighten to manufacturer's specifications. (Figures 10, 11)

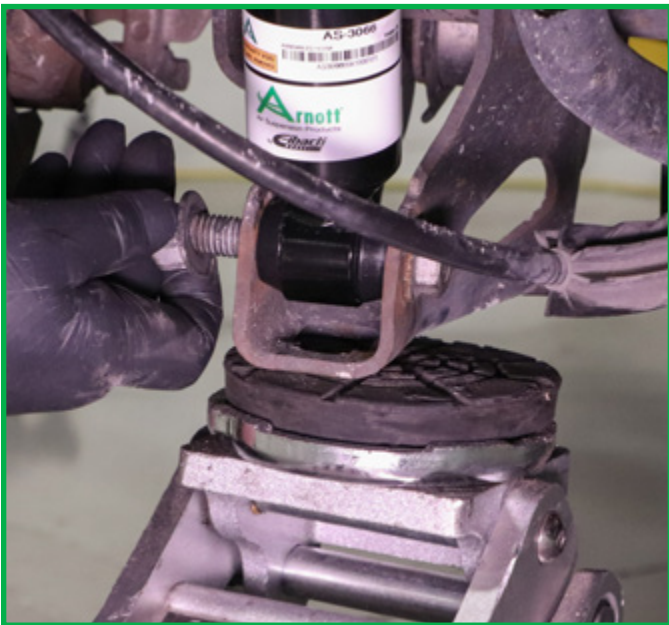


FIGURE 10



FIGURE 11

3. Install the upper strut mounting bolts and nuts and tighten to manufacturer's specifications. (Figures 12, 13)



FIGURE 12

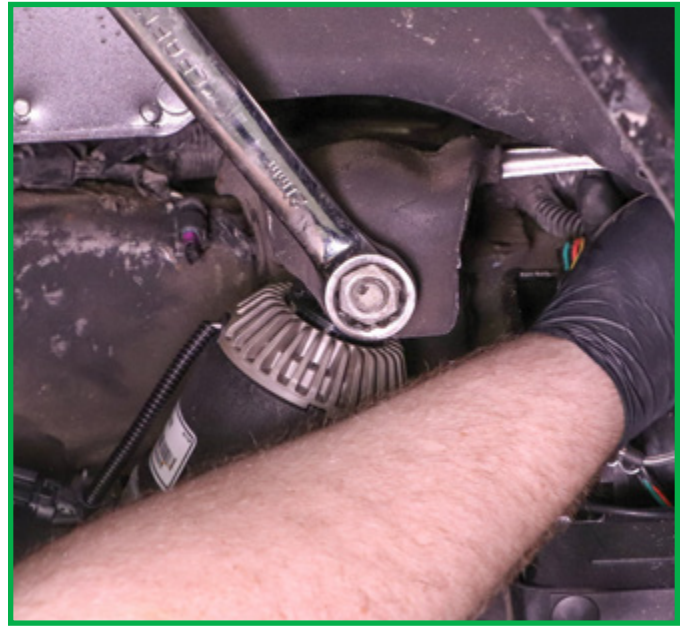


FIGURE 13

4. Install the electrical connection and clip to vehicle. Install the air hose connection. (Figures 14, 15)

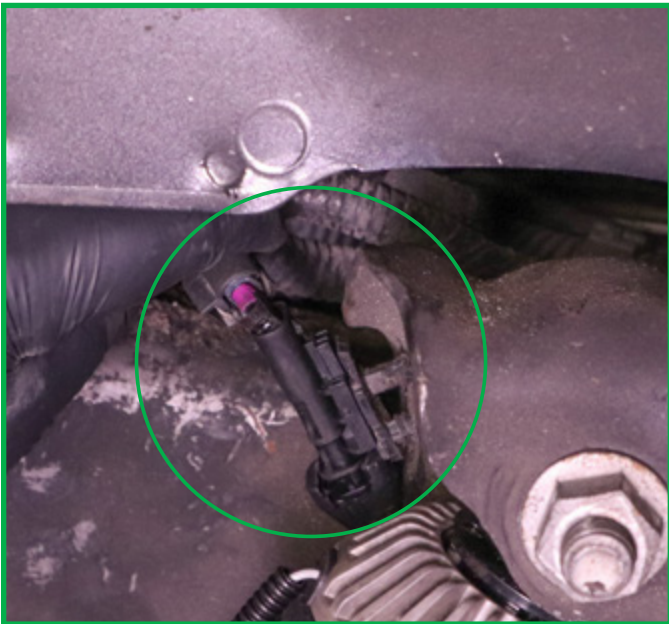


FIGURE 14

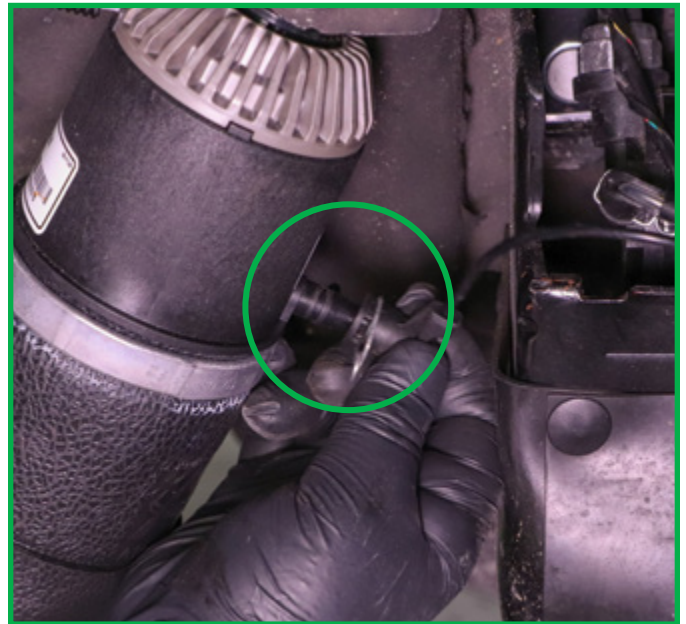


FIGURE 15

- 5. Install wheel well liner.
- 6. Install wheel.
- 7. Lower vehicle.
- 8. Installation complete.

# Arnott®

## Suspension Products

### Arnott US Business Office:

[www.Arnottinc.com](http://www.Arnottinc.com)

100 Sea Ray Drive  
Merritt Island, FL 32953

**Call:** 800.251.8993

321.868.3016

**Fax:** 321.868.3703

**Email:** [techassistance@Arnottinc.com](mailto:techassistance@Arnottinc.com)

### Arnott Europe Business Office:

[www.Arnotteurope.com](http://www.Arnotteurope.com)

Industrieweg 19  
5145 PD, Waalwijk (NL)

**NL Phone:** +31 73 7850 580

**DE Phone:** +31 85 2087 438

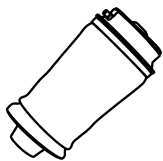
**UK Phone:** +44 203 3186 124

**BE Phone:** +32 258 846 90

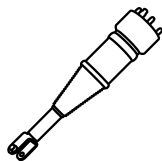
**ES Phone:** +34 91 901 10 56

**FR Phone:** +32 78 48 46 93

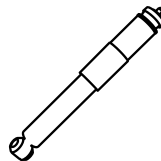
**Email:** [info@Arnotteurope.com](mailto:info@Arnotteurope.com)



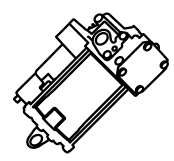
Air Springs



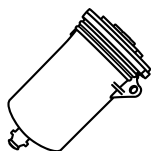
Struts



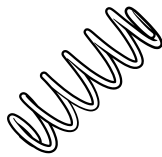
Shocks



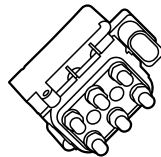
Compressors



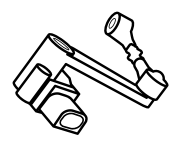
Dryers



Coil Spring  
Conversion Kits



Valve Blocks



Ride Height  
Sensors