



INSTALLATION MANUAL

AS-5145 Arnott New Rear Air Strut Tesla Model X (5YJX Chassis, w/o Adaptive Damping)



Engineered to Ride, Built to Last®

CONGRATULATIONS ON YOUR PURCHASE OF AN ARNOTT® SUSPENSION PRODUCT

WE AT ARNOTT LLC ARE PROUD TO OFFER A HIGH QUALITY PRODUCT WITH ALL THE TECHNICAL SUPPORT YOU NEED. THANK YOU FOR YOUR CONFIDENCE IN US AND OUR PRODUCT.

Proper installation is essential to experience and appreciate the benefits of this system. Please take a moment to review these installation instructions before you begin to install these components on your vehicle. The removal and installation of air suspension products should only be performed by a fully qualified and certified automotive professional.

It is equally important to be aware of all necessary safety measures while installing your new Air Suspension System. This includes proper lifting and immobilizing of the vehicle and isolation of any stored energy to prevent personal injury or property damage.

GENERAL INFORMATION

Reading this manual signifies your agreement to the terms of the general release, waiver of liability, and hold harmless agreement, the full text of which is available at www.arnottinc.com and www.arnotteurope.com.



WARNING:

The air suspension system is under pressure (up to 10 bar, or 150 lbf/in). Verify pressure has been relieved and disconnect power to the air suspension system prior to disassembly. Do not allow dirt or grease to enter the system. Always wear standard hand, ear, and eye protection when servicing the air suspension system.

- Not to be stored below 5°F (-15°C) and above 122°F (50°C).
- Avoid damage to air lines and cables.
- Removal and installation is only to be performed by fully qualified personnel.
- Use car manufacturer's diagnostic software.

CAUTION:

Damage to the vehicle and air suspension system can be incurred if work is carried out in a manner other than specified in the instructions or in a different sequence.

To avoid the possibility of short circuits while working with electric components consult your owner's manual on how to disconnect your battery.

Consult your vehicle owner's manual, service manual, or car dealer for the correct jacking points on your vehicle and for additional care, safety and maintenance instructions. Under no circumstances should any work be completed underneath the vehicle if it is not adequately supported, as serious injuries and death can occur.

For vehicles with a "Closed Air Supply System," replacement of components requires proper adherence to procedures set forth within OE servicing literature. Failure to comply with the OE prescribed procedures can result in component damage and/or failure.

AIR STRUT REMOVAL

1. Raise the vehicle.
2. Deflate and disable the air suspension per manufacturer's instructions.
3. Remove the applicable wheel. Remove the wheel well liner. (Figure 1)



FIGURE 1

4. Remove the side trim from the rear cargo area to gain access to the top mount nuts. (Figures 2, 3)



FIGURE 2

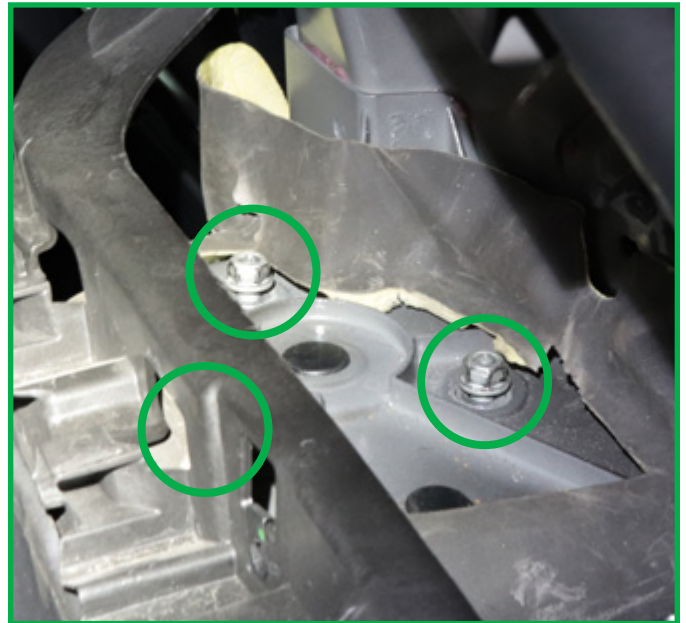


FIGURE 3

5. Remove the lower strut bolt. (Figure 4)

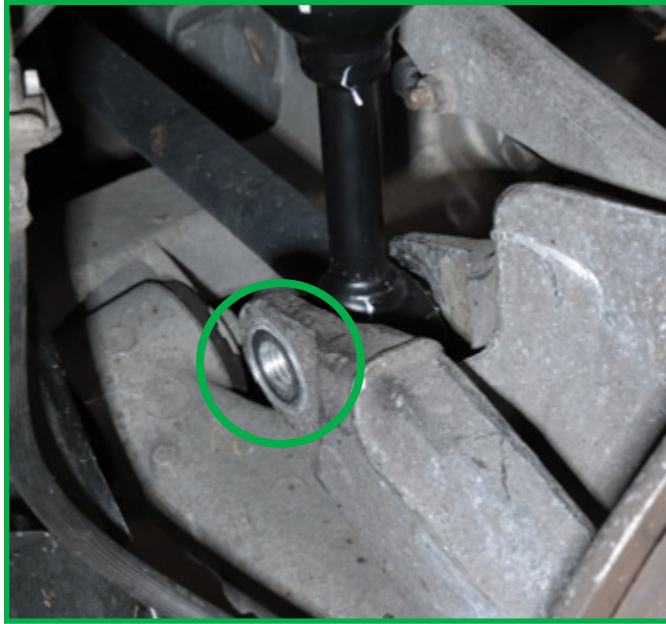


FIGURE 4

6. Partially remove the strut from the vehicle to gain easy access to the air line. Remove the air line from the air spring. (Figures 5, 6)



FIGURE 5

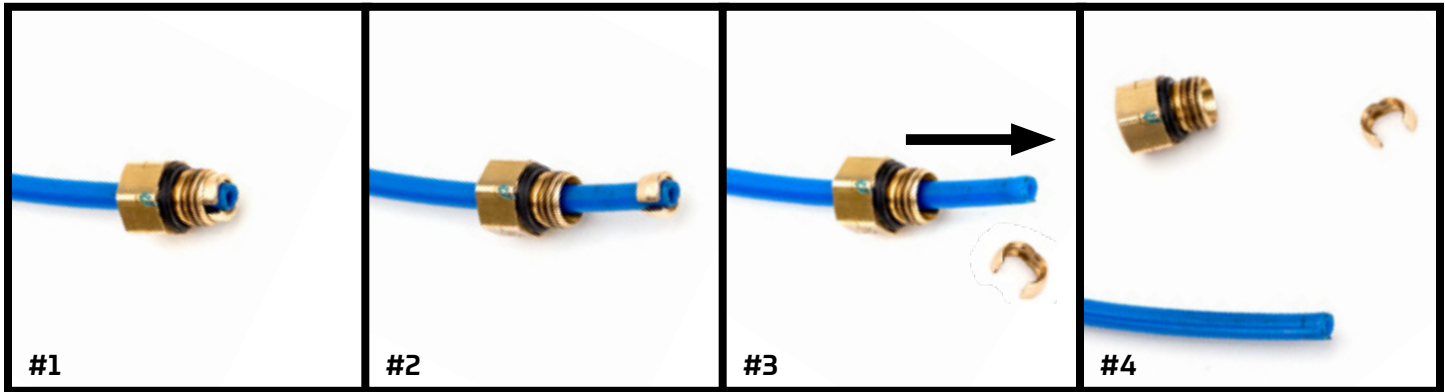
REMOVAL



Prior to inserting the existing air line into the new air strut you will need to remove the old original equipment air line fitting and discard.

NOTE:

Scratches and/or deep cuts in the air line can result in possible leaks. Inspect the air line before insertion. Air line needs to be replaced if damaged.



OE AIR LINE FITTING

SLIDE THE THREADED
PORTION UP THE LINE
AND SPREAD THE COLLET
OPEN TO REMOVE

SLIDE THE AIR FITTING
OFF OF THE AIR LINE

DISCARD OE AIR LINE
FITTING

FIGURE 6

7. Remove the upper control arm bolt at the wheel knuckle to allow clearance for the new strut. (Figure 7)

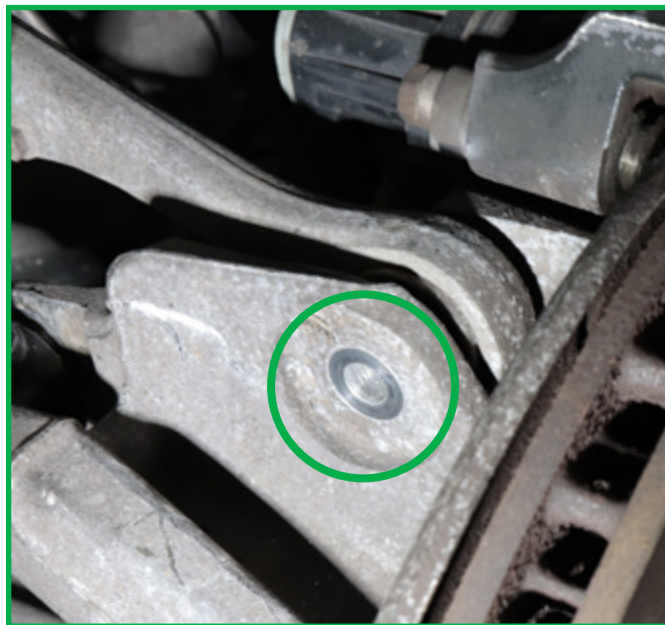


FIGURE 7

8. Removal complete.

AIR STRUT INSTALLATION



WARNING:

Tighten all nuts and bolts to manufacturer's specifications during the installation process.

1. Partially install the new strut into the vehicle, enough to install the air line into the new strut. (Figures 8, 9, 10)

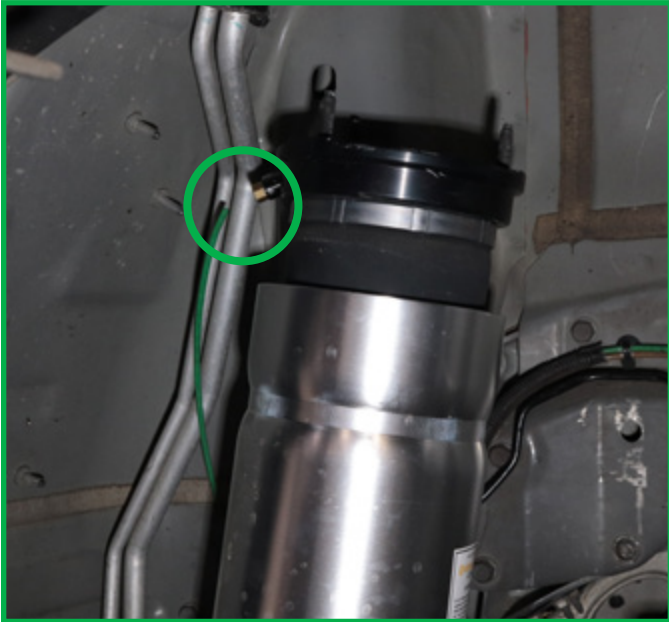


FIGURE 8

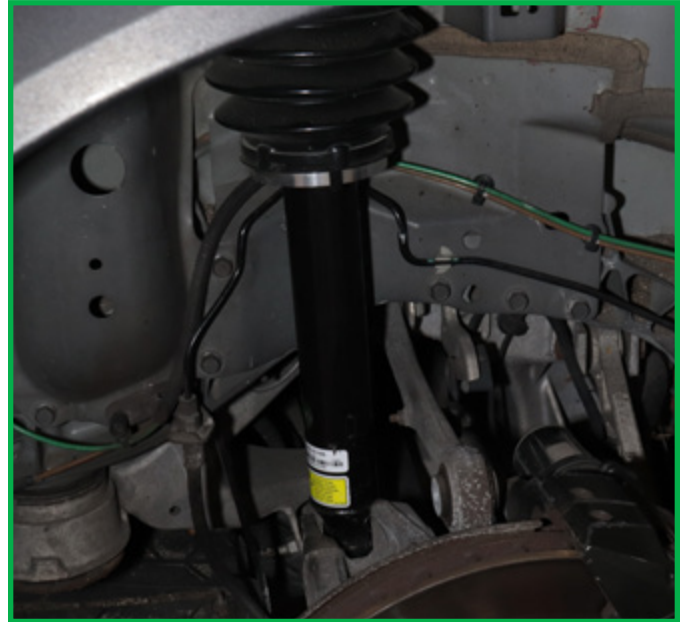
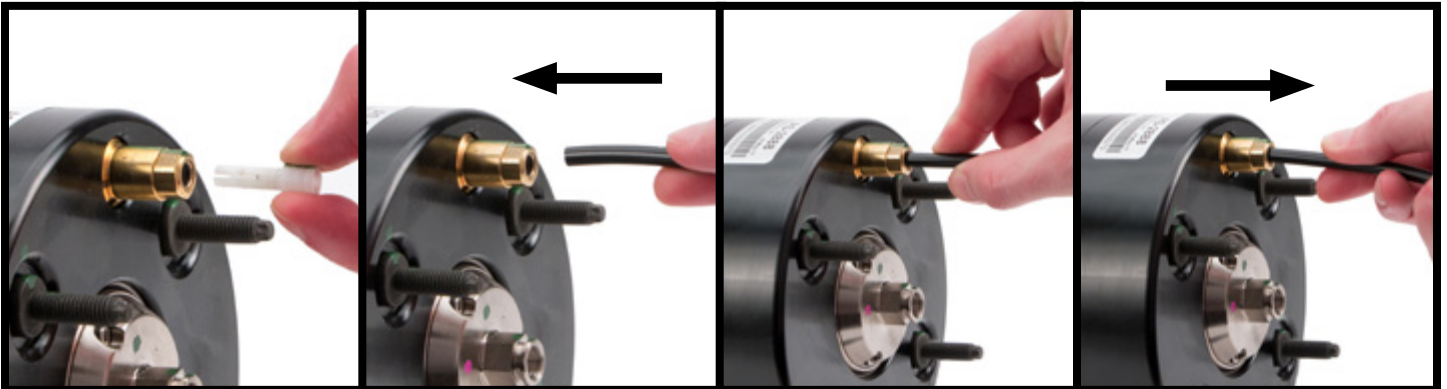


FIGURE 9



REMOVE AND DISPOSE OF
THE SHIPPING PIN.

INSERT AIR LINE INTO
THE AIR LINE FITTING
UNTIL IT STOPS.

AIR LINE INSERTED.

GENTLY PULL ON AIR
LINE TO CONFIRM IT IS
FULLY SECURED BY THE
AIR LINE FITTING.

FIGURE 10

2. Loosely install the top mount nuts to hold the strut in position. (Figure 11)

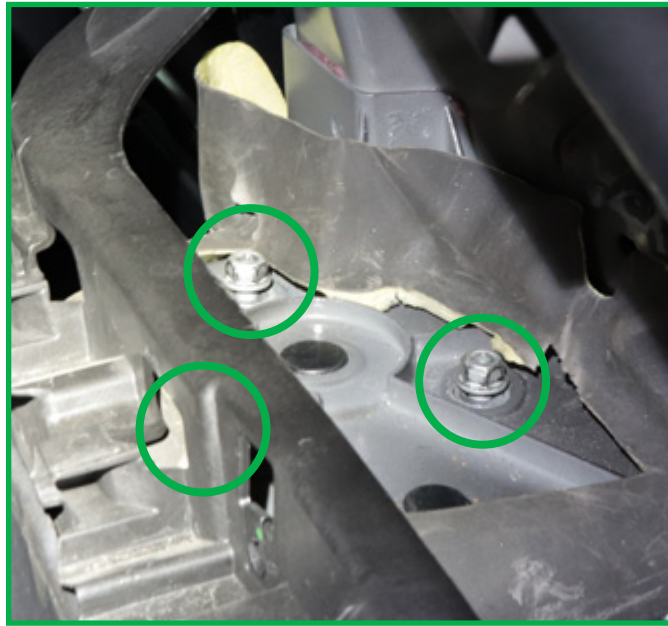


FIGURE 11

3. Maneuver the lower mount into position and install the lower mount bolt and upper control arm bolt. (Figures 12, 13)

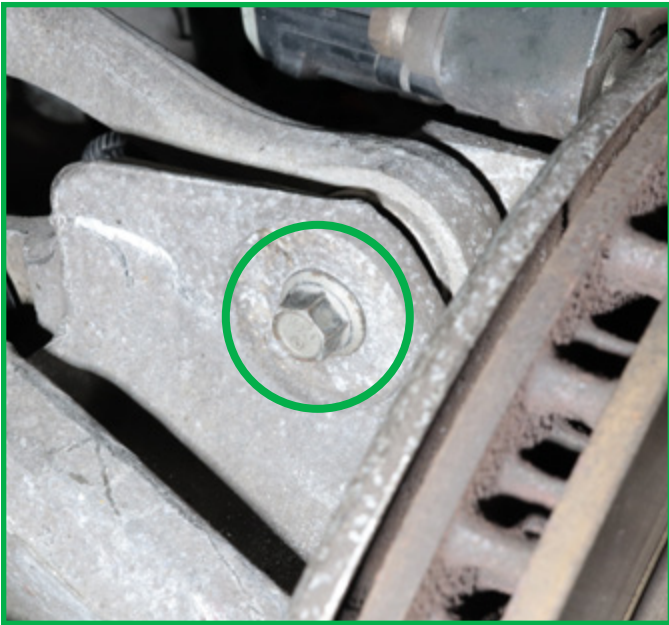


FIGURE 12

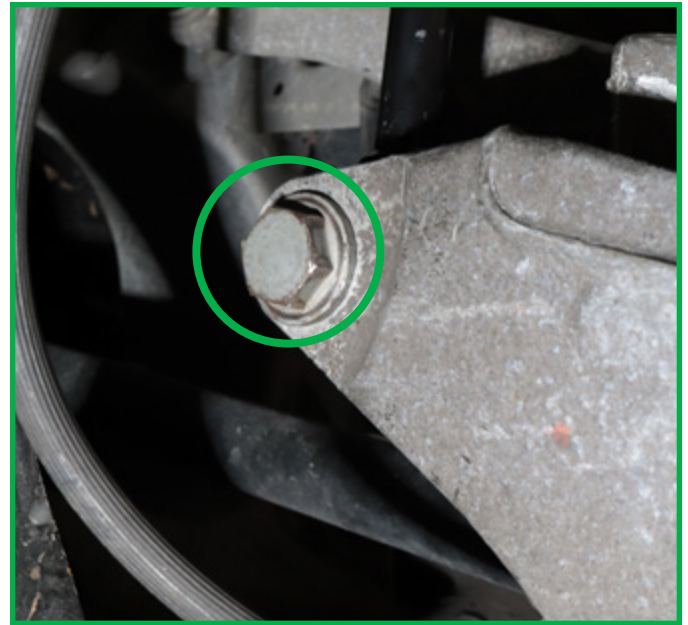


FIGURE 13

4. Tighten all hardware to manufacturer's specifications.
5. Reinstall the cargo area trim and wheel well liner.
6. Reinstall the wheel.
7. Enable and inflate the suspension system.
8. Installation complete.

Arnott®

Suspension Products

Arnott US Business Office:

www.arnottinc.com

100 Sea Ray Drive
Merritt Island, FL 32953

Call: 800.251.8993

321.868.3016

Fax: 321.868.3703

Email: techassistance@arnottinc.com

Arnott Europe Business Office:

www.arnotteurope.com

Industrieweg 19
5145 PD, Waalwijk (NL)

NL Phone: +31 73 7850 580

DE Phone: +31 85 2087 438

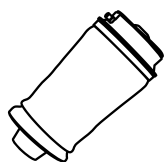
UK Phone: +44 203 3186 124

BE Phone: +32 258 846 90

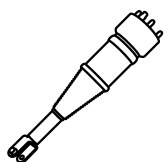
ES Phone: +34 91 901 10 56

FR Phone: +32 78 48 46 93

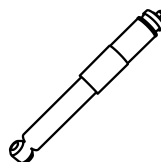
Email: info@arnotteurope.com



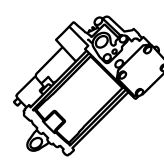
Air Springs



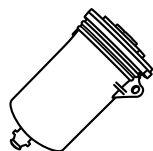
Struts



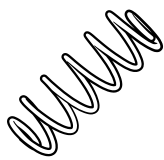
Shocks



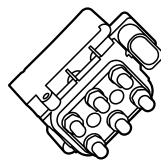
Compressors



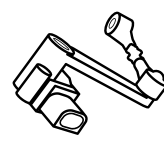
Dryers



Coil Spring
Conversion Kits



Valve Blocks



Ride Height
Sensors