

## Product info sheet

Delphi

28602948-12B1

Special tools needed?

No

## Product specific information

Programming

Yes

C3I code (20 characters)

Unlocking

No

Adaption values reset

No

Bleed

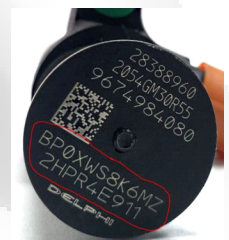
Yes

ignition on for 30 seconds

adjustment at mounting\_1

No

adjustment at mounting\_2



## Tightening torques

Injector/ retaining clamp

7 Nm + 110°

High Pressure pipe nuts

27 Nm

## Assembly instructions

Replace sealing washer

Recommendation: replace fuel filter

### Core charge terms:

- externally intact,
- no mechanical damage,
- not dismantled,
- no heavy corrosion.