

# MONROE

## Technical Notes

TECHNICAL NOTES FROM THE LEADERS IN RIDE PERFORMANCE



## Monroe Technical Note

### 250

1. **IMPORTANT – Read through all of instructions before starting installation.**
2. Open the bonnet and support in place with existing bonnet prop  
(The Image below shows the finished installation with Gas Struts in place for the base model)
3. See each section as noted for instructions on fitting individual parts



Monroe Technical Helpline

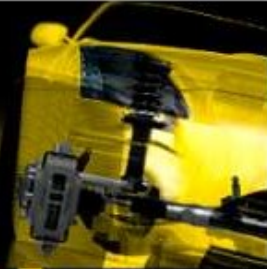
**1800 088 205**

**[www.monroe.com.au](http://www.monroe.com.au)**

# MONROE

## Technical Notes

TECHNICAL NOTES FROM THE LEADERS IN RIDE PERFORMANCE



4. Fit a long ball stud & washer to R/H (Driver's) side inner wing & clip on rod end of gas strut (see below)

**IMPORTANT** – Due to various under bonnet layouts, after step 4 It is important **TO CHECK** that there is sufficient clearance for the Gas Strut to lie along the inside of the inner wing, **BEFORE DRILLING** and fitting the bonnet brackets. If the strut contacts any objects, these objects may need to be moved slightly or in some cases relocated using the methods and brackets in section “A” & onwards



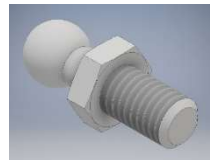
# MONROE

## Technical Notes

TECHNICAL NOTES FROM THE LEADERS IN RIDE PERFORMANCE



5. Fit a **short** ball stud & washer to L/H (Passenger) side inner wing & clip on rod end of gas strut (see below). Note - Remove the bolt holding the battery bracket (if present) and replace with ball stud.
6. **IMPORTANT** – Due to various under bonnet layouts, after step 5 It is important **TO CHECK** that there is sufficient clearance for the Gas Strut to lie along the inside of the inner wing, **BEFORE DRILLING** and fitting the bonnet brackets. If the strut makes contact with any objects, these objects may need to be moved slightly or in some cases relocated using the methods and brackets in section “A” & onwards



7. Fit a **short** ball stud to the R/H bonnet bracket (below right) & Clip the body end of gas strut to the ball stud as shown (Below).

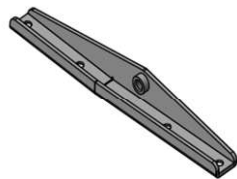
# MONROE

## Technical Notes

TECHNICAL NOTES FROM THE LEADERS IN RIDE PERFORMANCE



8. The Bonnet bracket should fit into contour of underside of bonnet with two widest spaced holes toward the front of the bonnet.
9. Mark out the hole positions by aligning the bracket with the contour of the bonnet and marking through the holes in the bracket onto the underside of the bonnet
10. Once the holes have been marked on the underside of the bonnet use a 9mm Diameter drill and carefully drill through the under skin of the bonnet. Take care not to contact the outer skin of the bonnet, **use a sleeve or tape around the drill to limit the depth of drill penetration.**
11. Insert M6 Rivet Nuts into each of the drilled holes with a rivet nut tool (not supplied) and fix the bracket to the bonnet using the M6 hex socket head bolts.



Monroe Technical Helpline  
**1800 088 205**

[www.monroe.com.au](http://www.monroe.com.au)



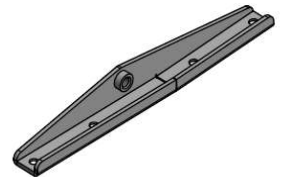
# MONROE

## Technical Notes

TECHNICAL NOTES FROM THE LEADERS IN RIDE PERFORMANCE



12. Fit a **short** ball stud to the L/H bonnet bracket (below Right) & Clip the body end of gas strut to the ball stud as shown (Below)
13. Bonnet bracket should fit into contour of underside of bonnet with two widest spaced holes toward the front of the bonnet
14. Mark out the hole positions by aligning the bracket with the contour of the bonnet and marking through the holes in the bracket onto the underside of the bonnet
15. Once the holes have been marked on the underside of the bonnet use a 9mm Diameter drill and carefully drill through the under skin of the bonnet. Take care not to contact the outer skin of the bonnet, **use a sleeve or tape around the drill to limit the depth of drill penetration.**
16. Insert M6 Rivet Nuts into each of the drilled holes with a rivet nut tool (not supplied) and fix the bracket to the bonnet using the M6 hex socket head bolts.



Monroe Technical Helpline  
**1800 088 205**

[www.monroe.com.au](http://www.monroe.com.au)

# **MONROE**

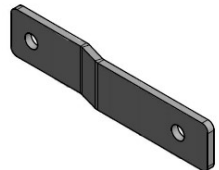
## **Technical Notes**

TECHNICAL NOTES FROM THE LEADERS IN RIDE PERFORMANCE



If at step 4 & 5 the Gas Strut makes contact with any objects inside the engine bay then refer to the following instructions

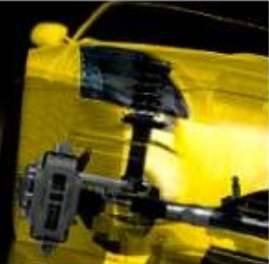
- A. If the Gas Strut will make contact with this enclosure (below) on the driver's side inner wing. Then Dismount the enclosure & fit the offset bracket (below right) to the inner wing. Then remount enclosure using the existing plastic clip as shown (Below).



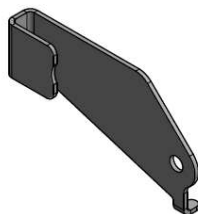
# MONROE

## Technical Notes

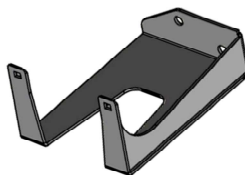
TECHNICAL NOTES FROM THE LEADERS IN RIDE PERFORMANCE



- B. Disconnect power outlet enclosure and remove existing bracket, then fit new power outlet bracket (below right) and replace power outlet enclosure as shown (below).



- C. Dismount accessory fuse enclosure & remove existing bracket. Fit offset bracket (below right) & replace accessory fuse enclosure as shown (below). This enclosure may be found on either L/H or R/H inner wing.



Monroe Technical Helpline  
**1800 088 205**

[www.monroe.com.au](http://www.monroe.com.au)



# MONROE

## Technical Notes

TECHNICAL NOTES FROM THE LEADERS IN RIDE PERFORMANCE



- D. For Later Models if Accessory Fuse box is fitted alongside the battery, this fuse box will need to be remounted lower down as per this illustration (below).



- E. If a dual battery system is fitted to the vehicle check to see if sufficient clearance is available for the Gas Strut to fit in the space between the inner wing and the second battery as shown (below).



Monroe Technical Helpline  
**1800 088 205**

[www.monroe.com.au](http://www.monroe.com.au)



# **MONROE**

## **Technical Notes**



TECHNICAL NOTES FROM THE LEADERS IN RIDE PERFORMANCE

- F. In this case the battery clamp has been cut back to give more space for the Gas Strut when the bonnet is closed (see below).



Monroe Technical Helpline

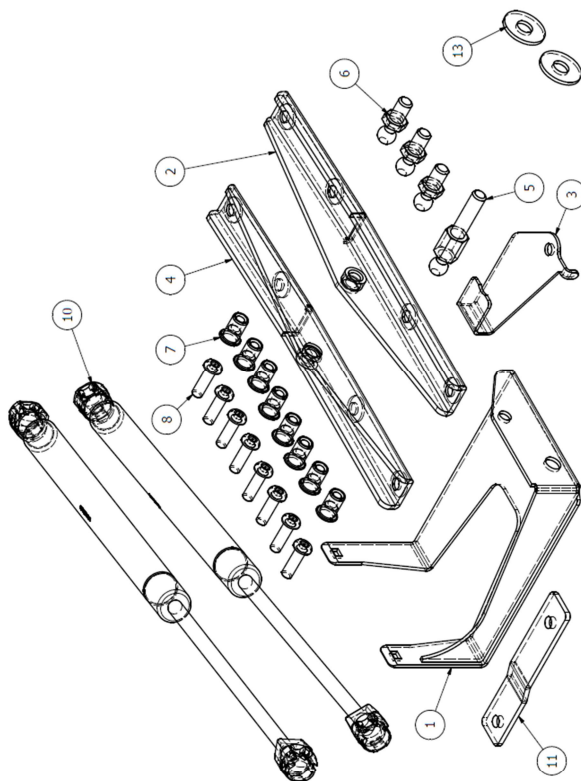
**1800 088 205**

**[www.monroe.com.au](http://www.monroe.com.au)**

# MONROE

## Technical Notes

TECHNICAL NOTES FROM THE LEADERS IN RIDE PERFORMANCE



PARTS LIST	
ITEM QTY	DESCRIPTION
1 1	OFFSET BRKT
2 1	L/H BONNET BRKT
3 1	OFFSET BRKT
4 1	R/H BONNET BRKT
5 1	LONG BALL STUD
6 3	SHORT BALL STUD
7 8	M6 RIVET NUT
8 8	HEXAGON SOCKET SCREW
10 2	GAS STUT
11 1	OFFSET BRKT
13 2	PLAIN WASHER



Monroe Technical Helpline  
1800 088 205

[www.monroe.com.au](http://www.monroe.com.au)