

UNICLUTCH™ SYSTEM

POSITIVE STEP FLYWHEEL

BEFORE YOU START

Before you start, make sure you have a UniClutch and a Vehicle Fitment Kit to suit your specific vehicle. Visit www.uniclutch.com/catalogue if you are unsure if the parts you have are correct for your vehicle.



CLUTCH



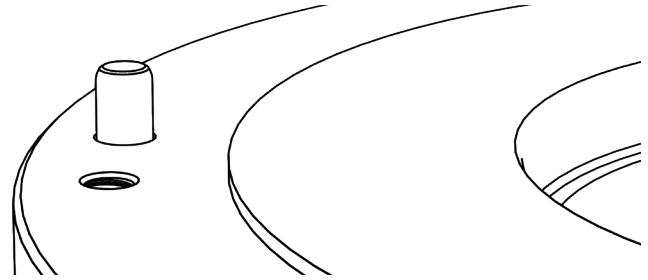
*Image for illustration purposes only

FITMENT KIT

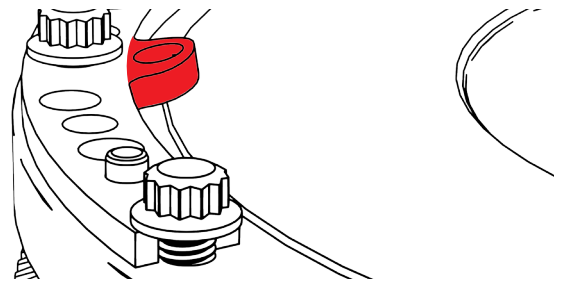
Positive Step Flywheel

For vehicles fitted with positive step flywheels, please place washers (not included) between the flywheel mount and the flywheel to prevent excessive bending of the flywheel mount.

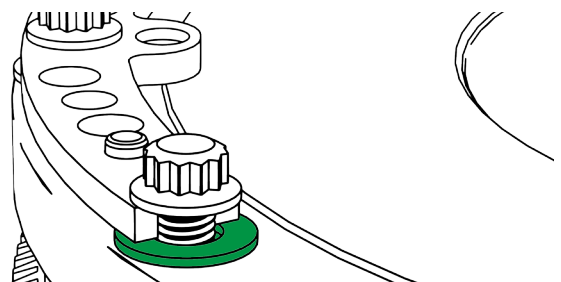
Where friction surface of the flywheel is on a higher level than the clutch bolting surface.



Without washer between the flywheel mount and the flywheel, UniClutch mounting tab is bent upwards, leading to improper installation.



A washer must be added in between the flywheel mount and flywheel so the UniClutch mounting tab is not bent.



UNICLUTCH

WWW.UNICLUTCH.COM/CATALOGUE

**PLEASE SCAN THE
QR CODE TO FIND
VEHICLE SPECIFIC
INFORMATION**



FLEX FIT FLYWHEEL MOUNT TO UNICLUTCH FITMENT NOTE

Add Loctite® 243™

Loctite® 243™ MUST be added to the full thread of all bolts included in this kit. Failure to follow this instruction can result in bolts vibrating loose in some applications.



Tighten Bolts

Only use the supplied counter sunk bolts to secure the Flex Fit Flywheel Mount to the UniClutch Core. These bolts are unique to the UniClutch system and cannot be substituted. Additional bolts can be purchased for UniClutch if required.

Torque Flywheel Mount to Clutch bolts to **22 Ft-lbs / 30 Nm** (pictured below).

Follow these instructions as they supersede all other UniClutch torque specifications.

Only use a calibrated hand torque wrench during this process. **DO NOT** use pneumatic tools.

Warranty void if all instructions are not followed precisely.



UNICLUTCH
WWW.UNICLUTCH.COM/CATALOGUE

**PLEASE SCAN THE
QR CODE TO FIND
VEHICLE SPECIFIC
INFORMATION**

