

ACDelco

BELT WEAR GAUGE - ACBWG

BELT WEAR GAUGE

USAGE INSTRUCTIONS

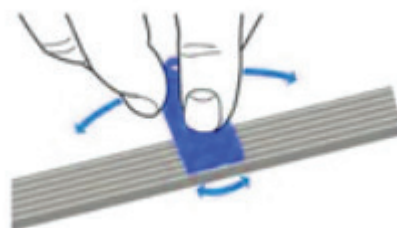


The ACDelco Belt Wear Gauge was designed with input from automotive professionals. It's easy to use and gives an instant pass/fail result. You can use it on or off the vehicle, one-handed, and even in places where you can't see.

HOW TO USE THE ACDELCO BELT WEAR GAUGE



With the engine off, press the gauge ribs into the belt grooves using gentle pressure to hold the gauge against the belt and seat the ribs.



Attempt to rock the gauge in a lateral motion.

GOOD BELT



When the gauge remains tightly seated and resists movement, the belt has sufficient life left.



The gauge ribs will contact the sides of the belt material and the body may rest slightly above the belt surface.

WORN BELT



If the gauge can be moved within the ribs, the belt requires replacement.



The gauge ribs will not contact the belt material and the gauge body will rest flat on the belt, allowing movement in the tool.

Check belts for inconsistent wear within grooves as an indication of pulley misalignment and/or malfunction of other components of the drive system.