



KNOW HOW

TECHNICAL BULLETIN



NAL1845 - 80amp Korean Fuse

Bulletin Ref: TB11n

Before fitting check the 80a PAL type fuse as this fuse can blow causing no charge. (Fig 1.)

Also check for corrosion around and underneath the fuse connections which is common.

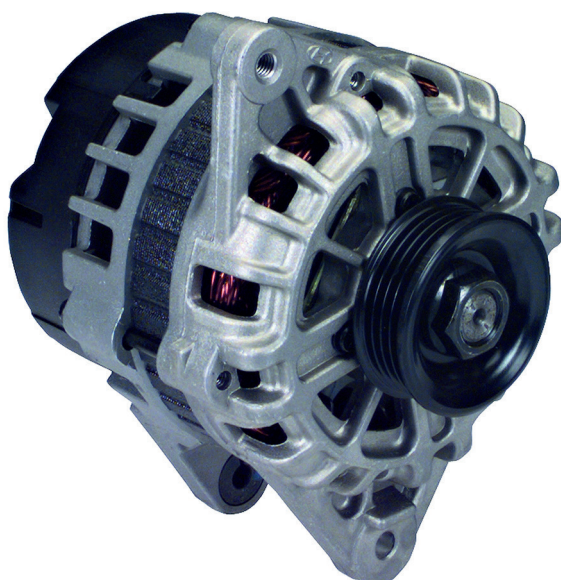
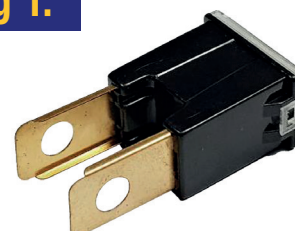


Fig 1.



Technical Support

Contact our expert technical team
on 03333 136597 or email
NAPATECHNICAL@allianceautomotive.co.uk



TechMate Support

Book a TechMate visit today!
Contact the team on 01174 288090
or email info@techmateteam.co.uk