



# KNOW HOW

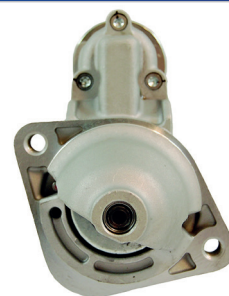
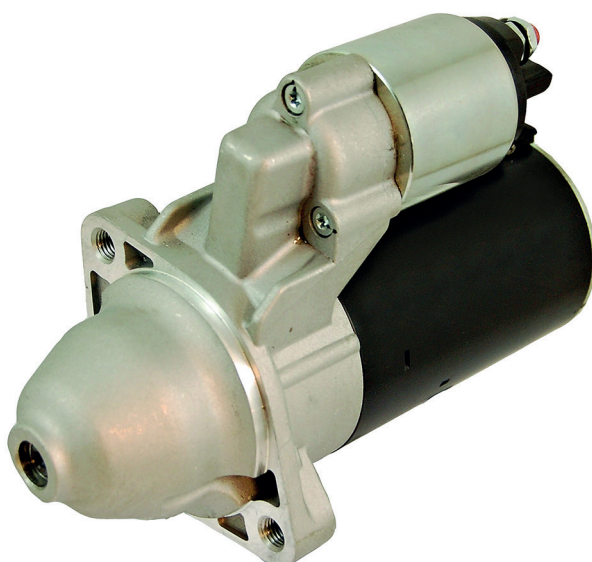
## TECHNICAL BULLETIN



### NSM1662

Bulletin Ref: TB26n

**This unit should only be fitted to a vehicle without start stop function.  
Fitting this to a vehicle with start stop function will invalidate the warranty and  
may result in damage to the vehicle.**



## Technical Support

Contact our expert technical team  
on 03333 136597 or email  
[NAPATECHNICAL@allianceautomotive.co.uk](mailto:NAPATECHNICAL@allianceautomotive.co.uk)



## TechMate Support

Book a TechMate visit today!  
Contact the team on 01174 288090  
or email [info@techmateteam.co.uk](mailto:info@techmateteam.co.uk)