



KNOW HOW

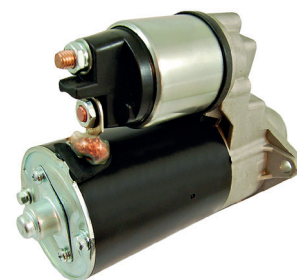
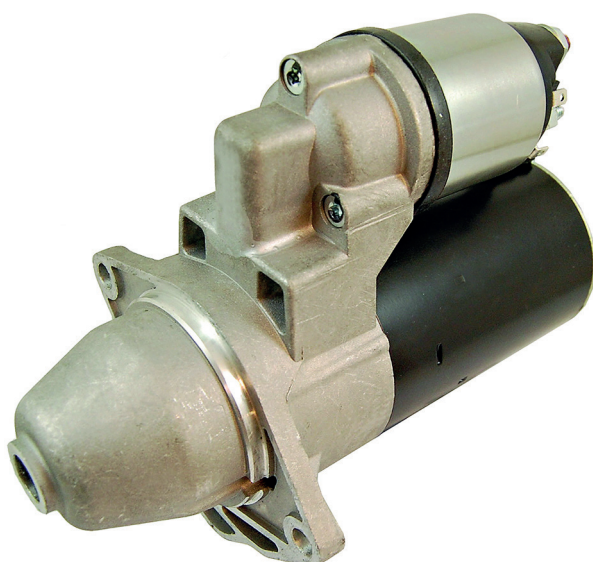
TECHNICAL BULLETIN



NSM1701

Bulletin Ref: TB26n

**This unit should only be fitted to a vehicle without start stop function.
Fitting this to a vehicle with start stop function will invalidate the warranty and
may result in damage to the vehicle.**



Technical Support

Contact our expert technical team
on 03333 136597 or email
NAPATECHNICAL@allianceautomotive.co.uk



TechMate Support

Book a TechMate visit today!
Contact the team on 01174 288090
or email info@techmateteam.co.uk