



KNOW HOW

TECHNICAL BULLETIN

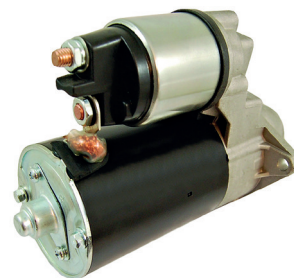
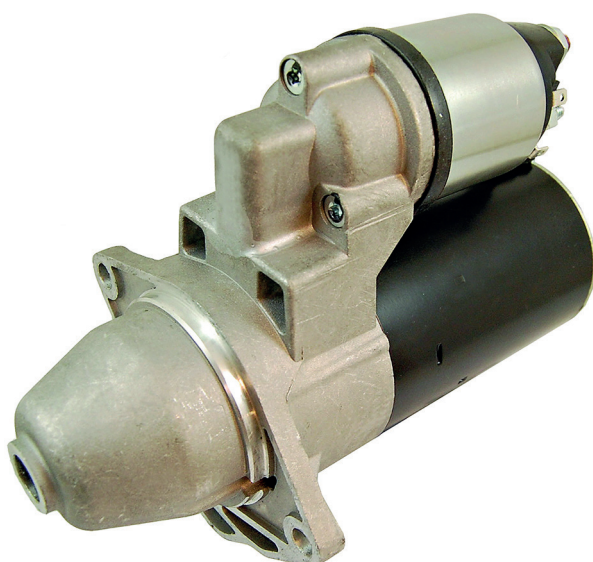


NSM1701

Bulletin Ref: TB26n

This unit should only be fitted to a vehicle with start stop function.

Fitting this to a vehicle without start stop function will invalidate the warranty and may result in damage to the vehicle.



Technical Support

Contact our expert technical team
on 03333 136597 or email
NAPATECHNICAL@allianceautomotive.co.uk

**TECH
MATE**

TECHNICAL
PARTNER

TechMate Support

Book a TechMate visit today!
Contact the team on 01174 288090
or email info@techmateteam.co.uk