

# Fitting Instructions



SKU

**T4P660**

PRODUCT

**TAG Heavy Duty Towbar for  
LDV T60 & T60 Max (07/2017 - on)**

SPECIFICATIONS

- Towbar Class: CL 4 Heavy Duty
- Towing Capacity: 3000kg
- Tow ball Weight: 300kg



Scan for  
latest  
version of  
these  
instructions

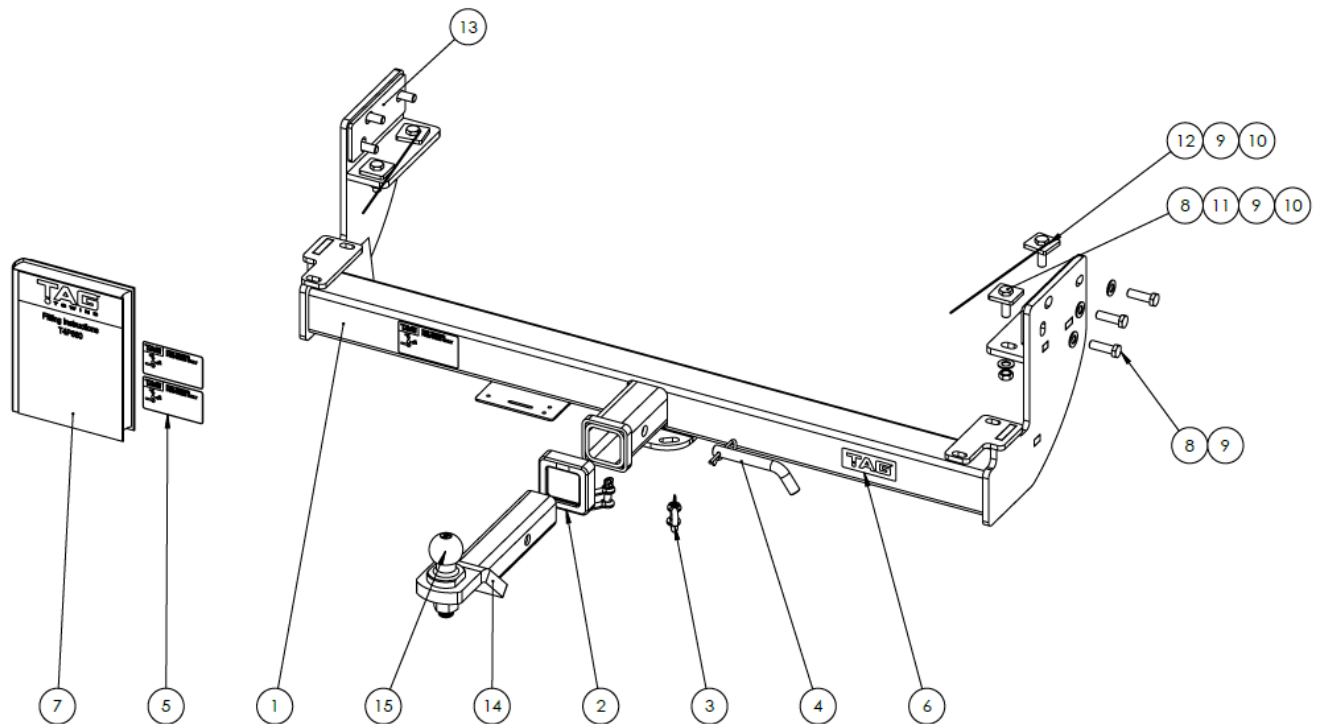
TOOLS REQUIRED

- Spanners
- Sockets
- Torque Wrench

IN THIS GUIDE

- Fitment Instructions
- Torque Settings
- Warranty Info

# Towbar Assembly



ITEM NO.	DESCRIPTION	QTY.	ITEM NO.	DESCRIPTION	QTY.
1	Main Assembly T4P660	1	9	M12 Flat Washer	10
2	TAG Hitch Cover	1	10	M12 x 1.75 Hex Nut	4
3	D-Shackle	2	11	Top Plate 40 x 40 x 6	2
4	Class 4 Pin & Clip	1	12	Bolt & plate on wire	2
5	TAG Compliance Sticker	3	13	Chassis Packer Plate	2
6	TAG STICKER - 100 X 40	1	14	L4045 PC Ball Mount	1
7	Fitting Instruction	1	15	50mm TAG Tow Ball	1
8	M12 x 1.75 x 40 Hex Screw	8			



## Important Information

### Warning:

- This product is for towing purposes only and must only be loaded as shown in your vehicle Owner's Manual.
- This towbar is NOT to be drilled, cut, welded, or modified in any way.
- Check behind chassis rail and body panels before drilling to ensure no hazards are present.
- All load ratings shown are under the assumption your trailer has a functional braking system installed.
- When installed in positions other than the one depicted in these instructions the Tow Ball Mount may interfere or obstruct certain features of your vehicle (tailgate opening, Chassis clearance, etc.)

### General:

- Before fitting this towbar read fitting instructions and check installation hardware is correct.
- Check that the towbar is suitable for the vehicle and be wary of any changes to the vehicle design that may conflict with the fitting of this towbar. (Tray, Canopy, Suspension etc.)
- After drilling, blow any filings clear, remove any swarf and treat exposed metal with a rust inhibitor.
- The high tensile fasteners supplied with this product are an integral feature to achieving the specified rating, if replacement is required ensure that fasteners of the same grade (8.8) & quality are used. Contact an authorised TAG distributor or the TAG fitment center - (07) 3208 3022 - if further information is required.

### Towbar Maintenance and Care:

It is recommended, when not in use, the Tow Ball Mount assembly and class 4 Pin and Clip is stored inside the car away from moisture to prevent standing water from forming rust. Inspect to ensure, on regular basis, fasteners are torqued to the specifications below and in good condition.

Ensure that the fitting instructions are read and understood prior to fitment  
Place these instructions in the vehicle's glovebox after installation is completed.

Metric Bolt Torque Settings										
Diameter	Pitch	Grade	Torque	Unit		Diameter	Pitch	Grade	Torque	Unit
M8	1.25	8.8	29	Nm		M12	1.50	8.8	97	Nm
M10	1.25	8.8	57	Nm		M12	1.75	8.8	77	Nm
M10	1.50	8.8	44	Nm		M14	2.00	8.8	122	Nm
M12	1.25	8.8	101	Nm		M16	2.00	8.8	190	Nm



# Installation Instructions

---

## Step 1: Remove Rear Bumper

---

- a. Disconnect any wiring attached to the rear step.
  - b. Remove 6X bolts securing the rear step to the chassis and discard.
- Note: Lower spare tire if more room is required.**



---

## Step 2: Remove brackets from Rear Step

---

- a. Remove 4X bolts holding brackets to the bumper. Retain bolts and discard brackets.

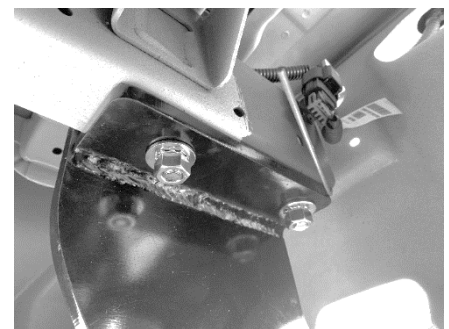
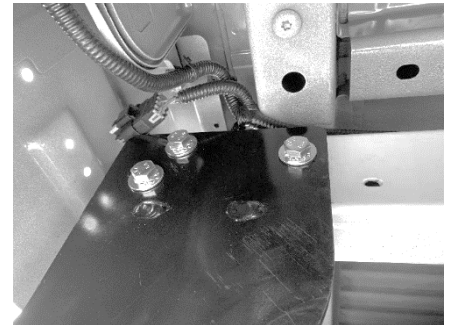


---

### Step 3: Fit Towbar & Refit Step

---

- a. Offer towbar to the chassis and loosely secure using the 3X M12 x 1.75 x 40 bolt sets into the captive nuts of the chassis.
- b. If the towbar is loose on the chassis insert the provided packer plates in between the chassis and towbar.
- c. Using the bolt and plate on wire secure the forwardmost vertical hole so the plate is on the inside of the chassis and then complete with flat washer and nut. Torque bolt to the specifications on pg3 and then secure the rearmost hole in the same way with the remaining M12 x 1.75 x 40 bolts, plates, washers, and nuts, torque all fasteners as per specifications on pg3.
- d. Using the retained bolts from earlier refit the bumper to the towbar and ensure it is level and sitting correctly on the car before torquing to manufacturers specifications.



---

### Step 4: Apply Compliance Label

---

- a. Apply one of the compliance labels to the pillar of the driver's door. Leave the remaining label and the fitting instructions in the vehicle handbook





## **TAG Warranty Statement**

SWD warrants your TAG Towbar for its full product life under the following conditions:

- You can show proof of purchase.
- The towbar has been correctly installed by a suitably qualified installer.
- The towbar has not been modified or abused in any way and has only been used for the purpose intended.
- The towbar was not fitted second hand to your vehicle.

The extent of this warranty includes materials and workmanship used in the manufacture of the towbar and is to the equivalent value of current, full replacement cost.

Nothing stated or implied in this warranty limits in any way, the statutory rights that you may have.

To make a claim visit the original installer in the first instance or, if you are unable to or are not satisfied with their help, then contact us direct by phone on 1300 669122 or visit [www.swd.com.au](http://www.swd.com.au).