

Fitting Instructions



SKU

PRODUCT

T7F742

**TAG Rear Step to suit Ford
Transit Custom (02/2014 - on)**



Scan for latest
version of these
instructions

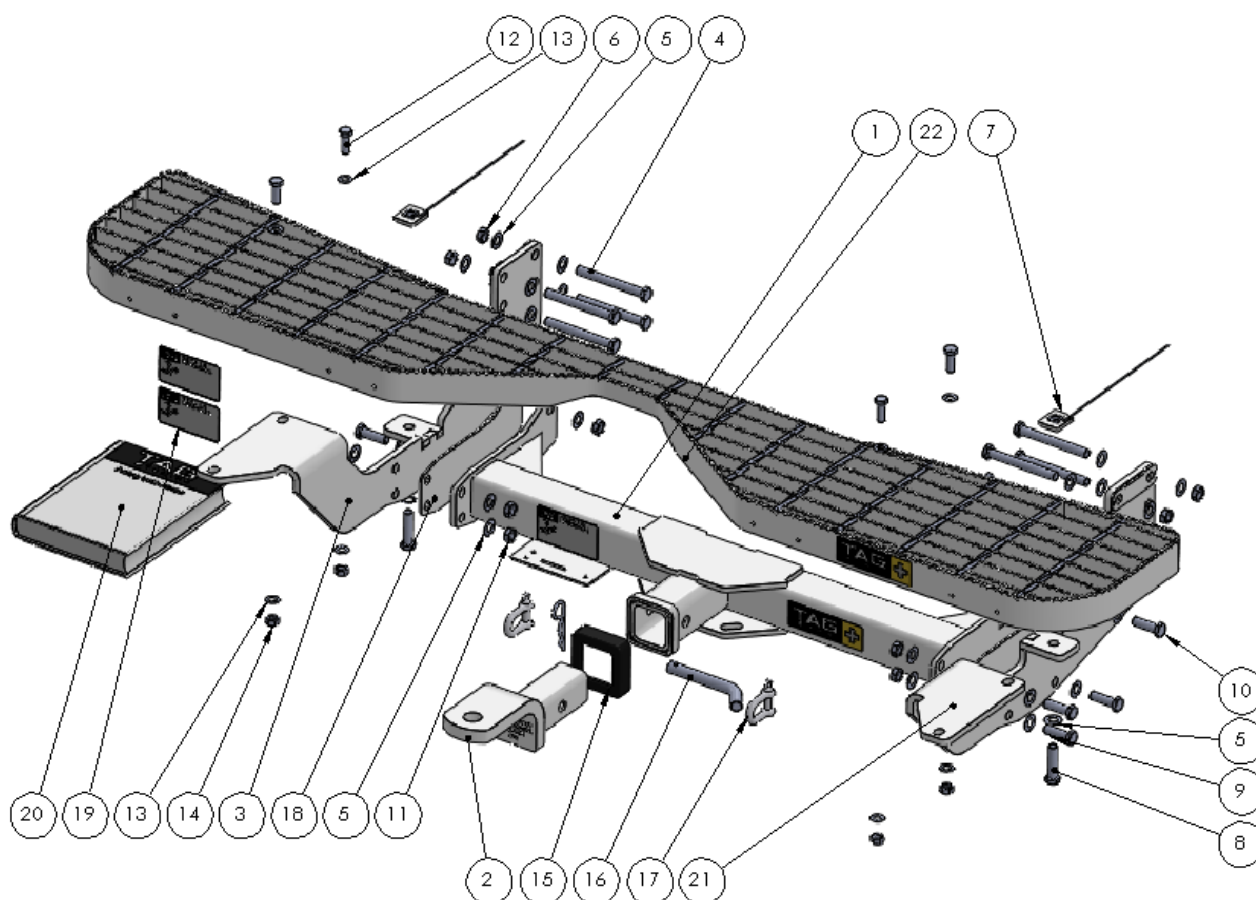
SPECIFICATIONS

- Towbar Class: Heavy Duty, Extended 3-Piece
- Towing Capacity: 2800kg

IN THIS GUIDE

- Fitment Instructions
- Torque Settings
- Warranty Info

Towbar Fitting Instructions



Tools Required: Spanners, Sockets, Torque wrench

ITEM NO.	DESCRIPTION	QTY.	ITEM NO.	DESCRIPTION	QTY.
1	Main Bar Assembly for T7F759	1	12	M10x1.25x30 Bolt	4
2	End Plate Assembly PS	1	13	M10 FLAT WASHER	8
3	End Plate Assembly DS	1	14	M10x1.25 Nut	4
4	M12x1.75x100 Bolt	8	15	Cover Hitch Receiver	1
5	M12 Flat Washer Zinc Clear	30	16	Class 4 Pin & Clip	1
6	M12x1.75 Nut	4	17	TAG D-Shackle	2
7	M12x1.75 Nut Plate on 250mm Wire	2	18	End Cap Spacer	2
8	M12x1.75x50 Bolt	2	19	TAG Compliance plate	3
9	M12 Shakeproof Washer	2	20	Fitting Instruction	1
10	M12x1.25x40 Bolt	8	21	L4120 Ball Mount	1
11	M12x1.25 Nut	8	22	TAG Rear Step (w/ towbar relief)	1

Step-By-Step Instructions

Warning:

- This product is for towing purposes only and must only be loaded as shown in your vehicle Owner's Manual.
- This towbar is NOT to be drilled, cut, welded, or modified in any way.
- Check behind chassis rail and body panels before drilling to ensure no hazards are present
- All load ratings shown are under the assumption your trailer has a functional braking system installed
- When installed in positions other than the one depicted in these instructions the Tow Ball Mount may interfere or obstruct certain features of your vehicle (tailgate opening, Chassis clearance, etc.)

General:

- Before fitting this towbar read fitting instructions and check installation hardware is correct.
- Check that the towbar is suitable for the vehicle and be wary of any changes to the vehicle design that may conflict with the fitting of this towbar. (Tray, Canopy, Suspension etc.)
- After drilling, blow any filings clear, remove any swarf and treat exposed metal with a rust inhibitor.
- The high tensile fasteners supplied with this product are an integral feature to achieving the specified rating, if replacement is required ensure that fasteners of the same grade (8.8) & quality are used. Contact an authorised TAG distributor or the TAG fitment centre - (07) 3208 3022 - if further information is required.

Towbar Maintenance and Care:

It is recommended, when not in use, the Tow Ball Mount assembly and class 4 Pin and Clip is stored inside the car away from moisture to prevent standing water from forming rust. Inspect to ensure, on regular basis, fasteners are torqued to the specifications below and in good condition.

Ensure that the fitting instructions are read and understood prior to fitment

Place these instructions in the vehicle's glovebox after installation is completed

Towbar Fitting Instructions



Step 1. Fit Towbar

Note: Removal of the bumper is only necessary if the installation requires the relocation of the factory fitted reverse sensors.

- a. Remove 2x M12 bolts from each chassis & discard.
- b. Lift PS endplate to the chassis & insert 2x M12x 100 bolts & flat washers into lower holes where original bolts were removed. Insert 2x M12x 100 bolts with washers into top holes & add flat washers & nuts to the outside. Leave loose.
- c. Insert nut plate on wire into lower chassis rail and loosely fasten with M12x 50 bolts & washers.
- d. Repeat on DS.
- e. Lift welded main bar up to end plates and insert 8x M12x 40 bolts with washers & nuts. Leave loose.
- f. If there is more than approx. 3mm clearance between the parts on each side, then spacers will be required.
- g. If the clearance is less than this, spacers will not be required between the parts.
- h. Mount the step onto the bracket /step assemblies and insert 4x M10x 30 bolts with flat washers & nuts. Leave loose.
- i. Tighten the M12 chassis bolts.
- j. Tighten the M12 main bar bolts.
- k. Tighten the M10 step bolts.



Towbar Fitting Instructions



Step 2. Apply Compliance Label

- a. Apply compliance label to driver's door A-pillar. Place spare compliance Label & fitting Instructions in the vehicle handbook.



Torque table for bolt tightening

Diameter	Pitch	Grade	Torque	Unit
M8	1.25	8.8	29	Nm
M10	1.25	8.8	57	Nm
M10	1.50	8.8	44	Nm
M12	1.25	8.8	101	Nm
M12	1.50	8.8	97	Nm
M12	1.75	8.8	77	Nm
M14	2.00	8.8	122	Nm
M16	2.00	8.8	190	Nm
Imperial Bolt Torque Settings				
$\frac{3}{8}$ "	UNC	8	44.75	Nm

TAG Warranty Statement

SWD warrants your TAG Towbar for its full product life under the following conditions:

- You can show proof of purchase.
- The towbar has been correctly installed by a suitably qualified installer.
- The towbar has not been modified or abused in any way and has only been used for the intended purpose.
- The towbar was not fitted second hand to your vehicle.

The extent of this warranty includes materials and workmanship used in the manufacture of the towbar and is to the equivalent value of current, full replacement cost.

Nothing stated or implied in this warranty limits in any way, the statutory rights that you may have.

To make a claim visit the original installer in the first instance or, if you are unable to or are not satisfied with their help, then contact us direct by phone on 1300 669122 or visit www.swd.com.au